

Title	Review of the current state of protein aggregation inhibition from a materials chemistry perspective: special focus on polymeric materials
Author(s)	Rajan, Robin; Ahmed, Sana; Sharma, Neha; Kumar, Nishant; Debas, Alisha; Matsumura, Kazuaki
Citation	Materials Advances
Issue Date	2021-01-15
Type	Journal Article
Text version	publisher
URL	http://hdl.handle.net/10119/17053
Rights	(c) 2021 The Author(s). Published by the Royal Society of Chemistry. Robin Rajan, Sana Ahmed, Neha Sharma, Nishant Kumar, Alisha Debas and Kazuaki Matsumura, Materials Advances, 2021, DOI:10.1039/D0MA00760A. This article is licensed under a Creative Commons Attribution 3.0 Unported Licence. http://creativecommons.org/licenses/by/3.0/
Description	



Cite this: DOI: 10.1039/d0ma00760a

Review of the current state of protein aggregation inhibition from a materials chemistry perspective: special focus on polymeric materials

Robin Rajan, *^a Sana Ahmed,^a Neha Sharma, ^b Nishant Kumar,^a Alisha Debas^a and Kazuaki Matsumura *^a

Protein instability caused by exposure to external additives or severe stress may result in different diseases. Of these diseases, many are triggered by protein misfolding and denaturation, leading to neurodegenerative disorders. Additionally, many other diseases are treated by biopharmaceutical approaches using proteins as drugs, which is again prone to denaturation. Numerous reagents and methods have been developed to understand protein instability and protection. However, the development of polymer-based protein protection agents as well as small molecules and peptides for combatting protein instability by inhibiting aggregation and facilitating protein refolding only gained attention in the last decade. In this review, we discuss protein aggregation inhibition and the role of polymers in protein protection. Further, we outline the significance of chemical additives in facilitating protein refolding and their importance in the use of recombinant proteins for treating neurodegenerative disorders.

Received 4th October 2020,
Accepted 14th January 2021

DOI: 10.1039/d0ma00760a

rsc.li/materials-advances

1. Introduction

Protein aggregation occurs when misfolded/unfolded proteins physically aggregate due to a series of sequential and parallel

events, which may be accompanied by changes in the native state of the protein, structural perturbations, and protein–protein interactions. Protein aggregation, which causes various diseases including neurodegenerative diseases, is a major challenge to the development of protein-based biopharmaceuticals.^{1–5}

Protein drugs are an indispensable class of biopharmaceutical products used to treat severe health conditions that cannot be treated using conventional drugs. As promising biotherapeutic agents, proteins offer advantages such as selectivity, specificity,

^aSchool of Materials Science, Japan Advanced Institute of Science and Technology, 1-1 Asahidai, Nomi, Ishikawa, 923-1292, Japan. E-mail: robin@jaist.ac.jp, mkazuaki@jaist.ac.jp

^bResearch Center for Bioscience and Nanoscience, Japan Agency for Marine-Earth Science and Technology, 2-15 Natsushima-cho, Yokosuka 237-0061, Japan

**Robin Rajan**

effect of polymers on cells, proteins, and other biologically relevant molecules.

Robin Rajan completed his PhD from the Japan Advanced Institute of Science and Technology (JAIST) in 2016 in Materials Science. He carried out his first postdoctoral stint at JAIST before moving to Nanyang Technological University, Singapore for another postdoctoral tenure. Since 2018, he has been working as an Assistant Professor at JAIST. His research interests include polymer chemistry, organic synthesis, and bio-materials, and is focused on the

**Kazuaki Matsumura**

Kazuaki Matsumura is a Professor at the Japan Advanced Institute of Science and Technology (JAIST). He received his PhD from Kyoto University in the field of Polymer Chemistry in 2004. He moved to JAIST in 2011 to set up a bio-materials laboratory and continues to investigate polymeric biomaterials and biomedical engineering applications of polymers. His research interests include the molecular design of protective materials for biomolecules and cells, drug delivery system carriers, and tissue engineering materials.



and potency. A common example of protein drugs is insulin, which is used for the treatment of type 1 and type 2 diabetes. According to a recent report by Syngene Research, the global market for protein-based therapeutics is expected to reach almost 303 billion USD by 2026.⁶ However, protein instability is a challenge for biopharmaceutical formulations, and overcoming it requires in-depth understanding of the underlying physical process and the methods that can be used to protect proteins.

Neurodegenerative disorders, such as Parkinson's disease, Alzheimer's disease, amyotrophic lateral sclerosis, and Huntington's disease are caused by protein aggregation.^{1,2} Globally, ~10 million people suffer from Parkinson's disease, and in the USA, ~5.4 million individuals have Alzheimer's disease.⁷ These disorders do not have definite cures; however, multiple strategies for disease management have been reported, including administering cholinesterase inhibitors for cognitive disorders,⁸ drugs, and suppressing the effects of genetic mutations.^{9–13} For combating neurodegenerative disorders, strategies to remove amyloid fibrils or refold misfolded proteins from the brain may be effective. A brief schematic illustration of protein aggregation and inhibition strategies is shown in Fig. 1.

Several processes and compounds that suppress protein aggregation inhibition with relative success have been developed. Several reviews on protein aggregation, its mechanistic aspects, and strategies for suppressing aggregation have been previously published,^{4,14–20} focusing on small molecule inhibitors of protein aggregation. For example, W. Wang has reviewed protein aggregation phenomenon with emphasis on small molecule compounds used for the inhibition of this process.⁴ Similarly, Estrada and Soto¹⁷ and Dhouafli *et al.*¹⁶ have described protein aggregation inhibition by short peptides and phenolic

compounds, respectively. Polymers have recently been recognized as efficient alternatives to small molecules for the inhibition of protein aggregation, as these have great potential to combat aggregation-induced issues and are effective in inhibiting protein denaturation and facilitating refolding. An exhaustive review detailing the problems, inducements, consequences, and available inhibitors of protein aggregation, with focus on polymers is required. Moreover, a review focusing on the refolding of denatured/misfolded proteins using chemical additives is unavailable in the literature.

In this review, we summarize recent advances in protein studies and discuss various mechanistic aspects and strategies to overcome protein aggregation. Further, we emphasize the development of polymeric compounds for stabilizing proteins both *in vitro* and *in vivo* and discuss the removal of aggregated species (refolding) using chemical additives. This review aims at providing an understanding of the mechanisms underlying protein aggregation and ways to overcome it, with particular focus on polymer-based inhibitors of protein aggregation. These inhibitors have the potential to be game-changers in the field of protein-based biopharmaceuticals owing to their greater flexibility and tunability compared to small-molecule analogues.

2. Protein aggregation

Under normal conditions, newly synthesized proteins fold into distinct three-dimensional structures and occasionally assemble into multimeric protein complexes. Self-assembly is a folding process through which proteins attain a specific conformation (Fig. 2). However, self-assembly is successful only under optimal

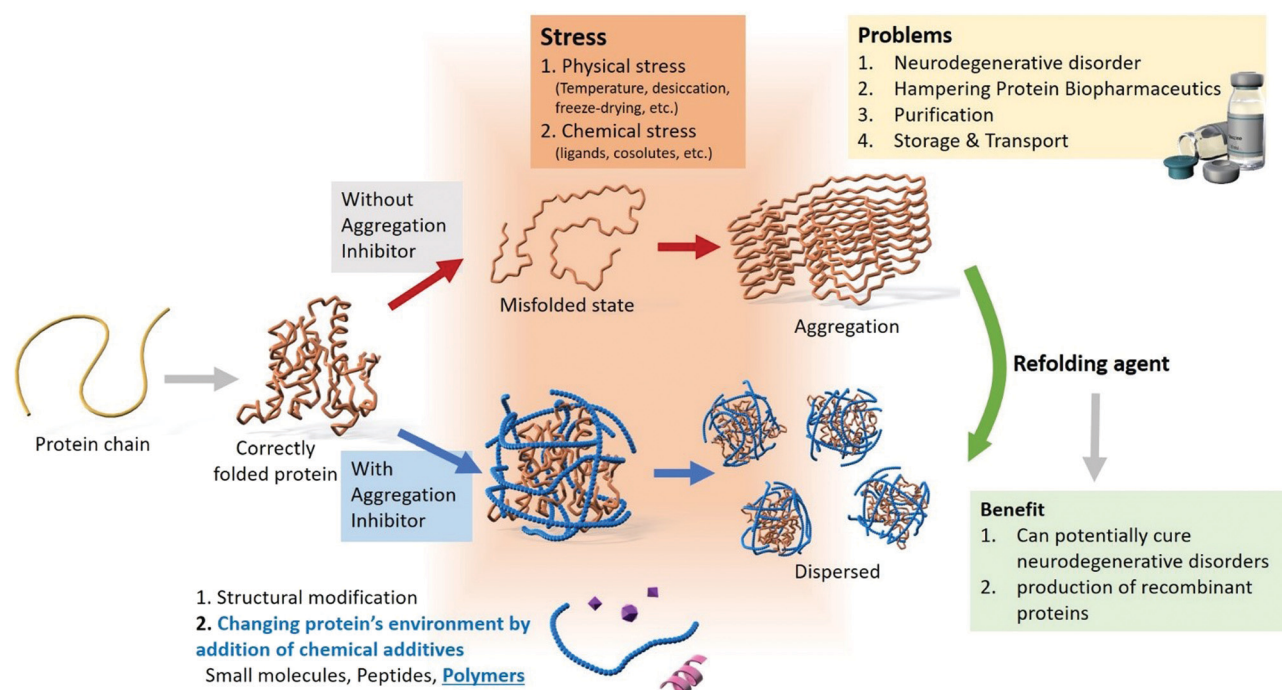


Fig. 1 Overview of the modes of protein aggregation, problems associated with aggregation, and the various inhibition strategies.



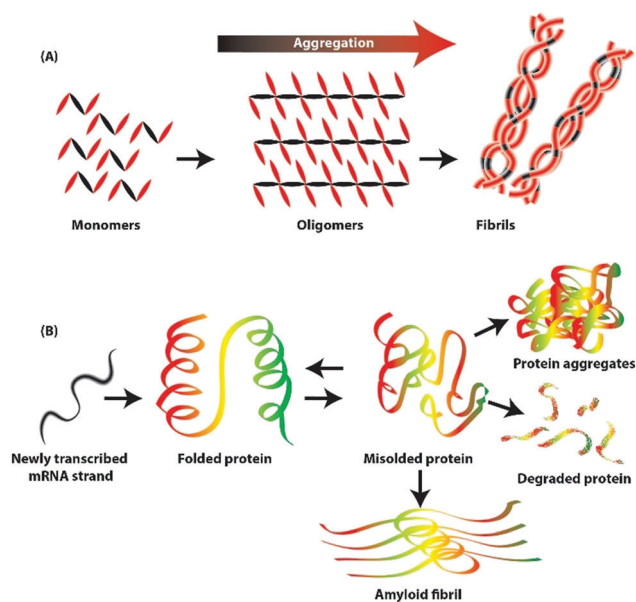


Fig. 2 (A) Diagrammatic representation of the steps for the formation of aggregation. (B) Depicted events shows the misfolded proteins or amyloid fibrils can form protein aggregate or refold back to the native structure.

conditions and in the absence of any external factors.²¹ At times, correctly folded proteins are exposed to cellular and physical stress, resulting in aggregation, misfolding, and unfolding.²²

Many factors, including thermodynamic behaviour, affect the durability and strength of proteins.²³ There is high probability for the loss of protein function and impairment of critical function under stresses such as heat shock and oxidative stress, resulting in protein misfolding or unfolding.²⁴ Misfolding results in the transformation of proteins into non-native structures and further into organized fibrils.²⁵ Over 35 human diseases, including Alzheimer's disease, Parkinson's disease, Huntington's disease, and sickle cell anaemia, are reportedly associated with protein aggregation and misfolding, presenting challenges for medical technology and industries.²⁶ Additionally, the possibility of formation of intermediates such as protofibrils and oligomers cannot be ignored.²⁷

There are 20 homologous proteins and a few associated proteins such as A β 1–40,²⁸ lysozymes,²⁹ and insulin,³⁰ which are known to form amyloid fibrils that trigger incurable diseases such as Parkinson's disease.³¹ Amyloid fibrils comprise 3–6 filaments that change form when the unfolded monomers are assembled into oligomers, followed by transformation into the metastable β -sheet conformation and subsequently into β -sheet rich structures.³² These oligomers can function as nucleation seeds to form further oligomers and fibrils; however, the dimension of the nucleus depends on the reaction kinetics and conditions.^{33,34}

Several factors, such as covalent and non-covalent interactions, are involved in the formation of clusters that lead to the loss of biological activity, immunogenicity, and other effects.³⁵ The initiation of aggregation may occur due to the interaction between hydrophobic patches on proteins, resulting

in a highly flexible folded state and insolubility.³⁶ Non-covalent interactions such as van der Waals forces and electrostatic interactions are responsible for self-aggregation.^{37,38} Insulin is a perfect example for studying oligomers in the native state, and it forms amyloid fibrils in a non-physiological state under reversible aggregation conditions.³⁹ Similarly, covalent aggregates are formed through disulphide linkages *via* free thiol-groups where disulphide-bonded proteins aggregate due to interchange *via* β -elimination.⁴⁰ Dityrosine formation, oxidation, and the Mailard reaction are a few examples of covalent interactions that induce protein aggregation.⁴¹ Thus, only a few aggregate types have been characterized so far, *viz.* irreversible or reversible,⁴² non-covalent⁴³ and covalent,⁴⁴ and small soluble aggregates,⁴⁵ where the nucleation–propagation mechanism⁴⁶ is commonly involved in the formation of aggregates.

3. Consequences of protein aggregation

Changes in protein structure associated with aggregation result in the formation of oligomers, followed by the growth of linear aggregates, and eventually, visible particles with low solubility are formed. In 1931, Hsien Wu outlined the issue of protein instability⁴⁷ and postulated a theory on protein denaturation. Protein aggregation in addition to triggering neurodegenerative diseases, causes challenges in the development and commercialization of biotechnology products and is observed in all stages of protein product development and manufacturing processes, such as protein expression,⁴⁸ formulation,⁴⁹ purification,⁵⁰ product filling,⁵¹ lyophilization,⁵² and storage (Fig. 3).⁵³ Protein purification poses different challenges for the solubilization of insoluble particles or aggregates, and the requirement of additional steps may result in reduced final yield of proteins, which is not

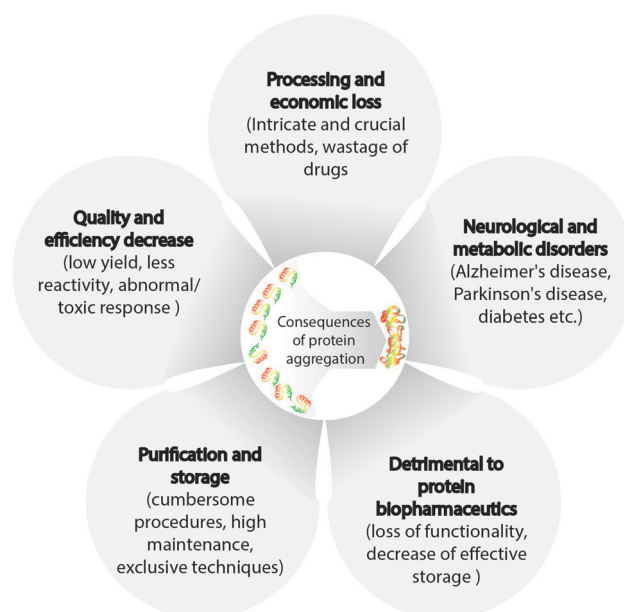


Fig. 3 An overview of various problems associated with protein aggregation.



economically viable. Moreover, other techniques steps such as vial filtration (purification method), inactivation, and chromatography can cause protein aggregation. In addition, conditions such as high protein concentrations, shear stress, changes in pH, and ionic strength may also trigger protein instability. For instance, chromatography, one of the most used purification methods that involves the presence of stationary and mobile phases (solvent), requires the addition of protein stabilizers to avoid aggregation. Another example is the addition of glutathione and ascorbic acid to prevent the generation of reactive oxygen species, which may promote aggregation.^{54,55} Moreover, proteins may adsorb on the stationary phase, leading to protein unfolding and increased aggregation. In addition, chromatography may require low pH, resulting in conformational or colloidal instability of the protein and causing aggregation.⁵⁰ Preparation of protein samples also involve centrifugation and filtration, which expose proteins to shear stress. Furthermore, the proteins at the air–liquid interface may form soluble or insoluble aggregates. Thus, conditions resulting in protein aggregation during purification need to be mitigated. Processes such as product filling, lyophilization, and long/short-term storage are discussed in the next section.

Additionally, protein aggregation can occur during or after the administration of protein in a therapeutic context.^{56,57} Multiple disorders and ailments such as myocardial infarction, diabetes, and cancer can be cured using commercially available protein-based products. At present, hundreds of such products are in the preclinical and clinical development stages. After production, the pharmaceutical protein must be stabilized and ideally requires a shelf life of 1.5–2 years.⁵⁸ This task is challenging as proteins are prone to aggregation, leading to their chemical and physical degradation and subsequent loss of activity.^{59,60}

Physical degradation occurs during the unfolding, accumulation, aggregation, and surface adsorption of the protein.^{59–61} Chemical degradation involves the oxidation, deamidation, and movement of the disulphide bond. Aggregation can occur under the influence of stresses and even under favourable conditions for native state/conformation. The formation of small aggregates is reversible, but denatured protein aggregation or the formation of non-native β -sheet structures is an irreversible process.⁶² Protein drugs that are currently available have aggregation issues; for example, insulin tends to precipitate and cause blockages in implantable and portable delivery systems. The most popular delivery method for insulin is *via* syringe, but its improper storage could lead to insulin aggregation. The use of lysine or arginine as additives may also induce the aggregation of insulin, as arginine changes the overall charge and hydrophobicity of insulin by binding to partially unfolded intermediates. The induced structural changes do not depend on the native structure of the protein or the final morphology of the aggregates. Further, the delivery of insulin *via* the gastrointestinal tract is not feasible owing to the presence of acid and enzymes. Multiple factors such as protein stabilizers, additives, and pH can affect the adsorption, aggregation, and retention of insulin in the gastrointestinal tract.⁶³

Glucagon is another synthesizable hormone that is used to maintain blood glucose levels in diabetic patients, and it facilitates glycogenolysis and gluconeogenesis by the liver. Glucagon helps treat acute hypoglycaemia, and it quickly restores normal levels of glucose. Its crystalline form is dissolved in diluted acid buffer and injected intramuscularly. In aqueous solutions, glucagon forms aggregates and precipitates owing to its low solubility⁶⁴ and is known to form amyloid-like fibrils in alkaline and acidic conditions.^{65–67} Therefore, it is important to have an alternative or analogue of glucagon with similar biological activity that is sufficiently soluble and stable under relevant physiological conditions.

Monoclonal antibodies (mAbs) are multidomain glycoproteins used by the immune system to protect the body against various invaders. They are used in treating infectious ailments, auto-immunity/inflammation, and metabolic disorders, and in oncological studies. Presently, more than 30 mAbs are commercially available. The preferred method of delivery, *i.e.*, subcutaneous injection, needs relatively high concentrations of antibodies. However, antibodies can aggregate irreversibly and form amyloid structures enriched in β -sheets,^{68,69} because of change in temperature, pH, salt concentration, type of buffer, and storage conditions.^{70,71} Bansal *et al.* analysed the aggregation of two antibodies (with pI of around 8.5 and 8.0) at different temperatures using acetate and citrate buffers (100 mM concentrations and pH 3.0 with 100 mM NaCl). The rate of aggregation was prominently higher in the presence of citrate relative to acetate buffer.⁷² Dispersed antibodies in citrate buffer have low stability, which leads to high aggregation. Moreover, there is less protein–protein repulsion due to decrease in protein charge, as citrate molecules possess higher charge. Hence, electrolytes in citrate buffer shield the electric double layer around the protein, thus decreasing the energy barrier. It is possible that faster aggregation in citrate buffer results because of the decrease in the net energy barrier for protein–protein interaction leading to antibody instability. To function, proteins must be stably folded into their three-dimensional framework. In certain circumstances, this may not occur due to the presence of mutations, failure of the proteostasis network, pathological conditions, or the prevalence of conditions such as temperature fluctuations, high pressure and agitation, or extreme pH, resulting in unfolded/misfolded proteins and aggregates.

More than forty human diseases are caused by the accumulation of distinct proteins with a unique clinical profile. For example, Alzheimer's disease (AD) is characterized by β -amyloid and tau protein aggregates, Parkinson's disease (PD) by α -synuclein (α Syn), and Huntington's disease by Huntington protein (Htt) aggregates. Alzheimer's disease (AD), which was first detected in 1906, affects millions of lives worldwide,⁷³ and is a major cause of dementia with no substantial treatment. The pathological hallmark of AD is the extracellular plaque deposition in the brain, which consists primarily of the β -amyloid peptide. The most toxic species of this peptide comprises 42 amino acids with a molecular weight of \sim 4.5 kDa. In solution, β -amyloid can form filamentous β -sheet aggregates without any change in physiological conditions.⁷⁴



In contrast, protein aggregates reportedly have a positive effect on stressed striatal neurons.^{75,76} Leitman *et al.* have proposed that protein aggregation is a defensive mechanism to protect, isolate, and segregate faulty proteins.⁷⁵ In this context, Arrasate *et al.* have shown that inclusion bodies (IB) protect neural cells by regulating the diffusion of toxic Htt.⁷⁷ Elevated β -amyloid protein levels are a marker for AD; however, in *C. elegans*, toxic aggregates of β -amyloid 42 were reduced under the influence of insulin/insulin growth factor-1-like signalling pathway (IIS).⁷⁸ The IIS pathway is responsible for determining the lifespan of multiple model organisms such as *C. elegans*, flies, mice, and humans as it regulates aging, stress, and resistance to disease.

Protein purification requires the solubilization of insoluble particles or aggregates, and it involves the use of conditions such as high protein concentrations, shear stress, changes in pH, and ionic strength, which may cause protein instability. Further, it involves the use of procedures that cause losses in the final yield that are not economical. Purification steps such as viral filtration, inactivation, and chromatography can cause protein aggregation. For instance, chromatography is an important filtration method and uses stationary and mobile phases (solvent) requiring the addition of protein stabilizers such as glutathione and ascorbic acid. This is done to prevent the generation of reactive oxygen species, which may provide hot spots for aggregation.^{54,55} The stationary phase may also cause adsorption of protein to the surface, leading to protein unfolding and increased aggregation. In addition, chromatography may require the presence of low pH, leading to conformational or colloidal instability in the protein, causing aggregation.⁵⁰ Protein preparations also require centrifugation and filtration, which expose proteins to shear stress (high speed of centrifugation). Further, exposure of proteins at the air-liquid interface may lead to the formation of soluble or insoluble aggregates. Thus, conditions leading to protein aggregation during purification need to be mitigated.

Protein aggregation is an inevitable challenge at every stage of protein synthesis, processing, and administration, which needs to be overcome using appropriate measures. Moreover, protein

aggregation triggers numerous complications *in vivo*. Hence, developing strategies to both protect proteins from aggregation as well as remove it post-aggregation is extremely crucial in many fields.

4. Factors affecting protein aggregation

Proteins can aggregate under various environmental conditions, and the extent of aggregation depends on intrinsic (indirect) and extrinsic (direct) factors. Extrinsic factors include environmental factors, genetic factors, metal ions, and oxidative substances that promote aggregation.⁷⁹ In this review, we focus on environmental factors and explain the role of temperature, pH, ionic strength, salt type and concentration, co-solutes, ligands, and various processes in protein handling that affect aggregation (summarized in Table 1).

4.1 Temperature

Temperature affects protein aggregation in multiple ways by influencing protein-protein interactions, rate of protein diffusion in solutions and the solid-state, conformational stability, solubility of proteins/aggregates, and chemical degradation. The thermodynamic stability of native protein conformation ranges from ~ 5 – 20 kcal mol⁻¹ in free energy.^{94,95} In physiological conditions, the native state of a protein is stable relative to the unfolded and biologically inactive conformations.^{96–98} Electrostatic forces, hydrophobic interactions, hydrogen bonding, van der Waals forces, and local peptide interactions are responsible for the free energy of the folding state.⁹⁹ Conformational entropy is the driving force that induces protein unfolding, and it is sensitive to changes in salt, solution pH, and temperature.

The thermodynamic stability of the native protein state as a function of temperature shows a typical parabolic profile.¹⁰⁰ An increase in temperature is likely to accelerate the aggregation process due to an increased rate of protein diffusion and the amount of partially unfolded states for various proteins.^{101,102}

Table 1 Factors affecting the process, rate, and mechanism of protein aggregation

Factors	Protein/antibodies	Condition of protein aggregation	Literature
Temperature	β -Lactoglobulin	Rapid increase in aggregates from 30 °C to 50 °C.	80
pH	Bovine-serum albumin, β -galactosidase glucagon-like peptide-1 β -Lactoglobulin	pH 7 to 1 caused freezing-induced aggregation (20 to -25 °C). pH 8.2 to 7.5 resulted in the formation of amyloid-like fibrils. Building blocks vary at pH 2 and 3.5.	81 82 83 and 84
Ionic strength	Soy protein	Decrease in surface charge and hydrophobicity when strength was increased from 0–500 mM.	85
Ligands	Insulin	Small peptide prevented the early formation of a critical nucleus.	86
Cosolutes	Lysozyme, insulin	Trehalose inhibits aggregation.	87
Salt type	Myofibrillar protein	MgCl ₂ and CaCl ₂ induced higher disulphide bonding than NaCl.	88
Salt concentration	Potato protein	Increase in NaCl affects surface dilatational elasticity and surface activity; also facilitates protein-protein interactions within surface film.	89
Pumping	Intravenous Ig	Electrostatic interactions between pump surfaces (negatively charged) and antibodies (positively charged).	90
Agitation	Whey protein	At 5% protein concentration, aggregation increased at a high shear rate.	91
Drying	Blood plasma	Sugar addition checks freeze-drying-induced aggregation.	92
Light exposure	α -Lactalbumin	Disulphide-mediated aggregation on exposure to UV-B (0–24 h).	93



In terms of Gibbs free energy ($\Delta G = \Delta H - T\Delta S$) for the transition between folded and unfolded state, ΔG decreases as temperature increases and eventually becomes zero and subsequently the free energy of the unfolded state of proteins becomes lower than that of the folded state. Thus protein unfolding becomes thermodynamically favourable at elevated temperatures.^{99,103,104} At high temperatures, proteins denature or degrade physically, in what is mostly an irreversible aggregation, as seen in the recombinant human Flt2 ligand,¹⁰⁵ streptokinase,¹⁰⁶ ribonuclease A¹⁰⁷ and the recombinant human keratinocyte growth factor.¹⁰⁸ Completely folded protein molecules do not form aggregates because aggregation is initiated at temperatures well below the equilibrium melting temperatures of proteins; at these temperatures, the amounts of native and denatured proteins are at equilibrium.⁶² Meanwhile, decreasing the temperature can cause cold-folding of the protein leading to its aggregation. Luan *et al.* have shown that the ribosomal protein L9 exhibited 76% aggregation at 4 °C and ~36% aggregation at 25 °C.¹⁰⁹ For antibodies, a decrease in temperature could induce precipitation as seen for the monoclonal IgM cryoglobulin at 14–15 °C.¹¹⁰ A recent report by Wälchli *et al.* using two immunoglobulins showed various types and mechanisms of aggregate formation between 40 °C and 5 °C.¹¹¹ Further, reversible oligomerization has been demonstrated in mAbs.^{112,113} Wang *et al.* have shown that antibodies with overall attractive protein–protein interactions at low temperatures could exhibit liquid–liquid phase separation, which is a type of protein condensation that involves separation of proteins into two phases: protein rich (bottom) and protein-poor (top).¹¹⁴

Temperature plays a crucial role in reaction kinetics as rate constants increase exponentially with temperature, *i.e.*, the rate of protein aggregation increases at high temperatures because of the rise in global molecular mobility (kinetic energy). Therefore, an increase in temperature accompanies an increase in the probability and number of collisions with enough energy to overcome activation energies.¹¹⁵ Moreover, these phenomena work in a cycle, with a rise in temperature enhancing the rate of monomer diffusion, accelerating the rate of the reaction. Proteins such as bevacizumab may follow the traditional Arrhenius relationship within a narrow temperature range between 25 °C and 50 °C;¹¹⁶ however, most proteins do not behave this way for a wide range of temperatures.^{117,118} Therefore, the rate of aggregation might be different at 25 °C than at 40 °C⁷⁰ due to the change in protein aggregate solubility,¹¹⁹ various aggregation mechanisms,¹²⁰ conformational stability,¹²¹ and the reversibility of protein aggregation¹²² at different temperatures. Thus, prescribed storage temperatures for proteins based on accelerated stability data,¹²¹ calculated using a modified Arrhenius equation¹²¹ and the extended Lumry–Eyring (ELE) aggregation model should be followed.¹²³

4.2 pH and ionic strength

Protein stability changes with alterations in solution conditions. One such condition is the solution pH, which affects protein aggregation by causing changes in protein conformation and stability.^{124–126} Filipe *et al.* showed that immunoglobulin G1

(IgG1) transformed from dimers to micrometer-sized aggregates in a few hours when the pH decreased from 6 to pH 1.¹²⁷ The pH can cause differences in the growth of the nucleus and the rate of aggregation¹²⁸ by influencing protein–protein interactions,^{129,130} the solubility of protein aggregates,¹³¹ and the reactivity of protein cross-linking reactions.¹³² Proteins can be very sensitive to a change in pH outside a narrow pH range, *e.g.*, insulin,¹³³ relaxin,¹³⁴ ribonuclease A,¹³⁵ rhGCSF,¹³⁶ and the recombinant factor VIII SQ.¹³⁷ pH affects electrostatic interactions and consequently protein stability in two ways; *e.g.*, when the solution pH is significantly different from the isoelectric point of the protein, it causes the protein to become highly charged, giving rise to repulsions.⁹⁹ These repulsions can destabilize the protein conformation *via* unfolding due to a change in charge density, and the unfolding decreases the free energy of the protein. Second, conformational stability changes while ion pairing, and instead of destabilizing the folded protein conformation, ion-pairing stabilizes it.^{99,138} Therefore, ionic strength influences protein aggregation.^{139,140} Ionic strength may first change the nature and extent of protein–protein interactions by altering the conformational stability of the protein.¹⁴¹ Anions and cations affect protein aggregation differently by binding or screening the protein molecules,^{129,142} and anions affect protein aggregation significantly¹⁴³ and for a wider range of pH due to their association with positively charged protein groups.¹⁴⁴ The effect of ionic strength greatly relies on the solution pH. Further, the ability of anions to affect aggregation varies with the electroselectivity and polarizability of the protein and solution conditions.^{142,145}

4.3 Cosolutes and ligands

Strongly binding ligands play a crucial role in the physical stability of a protein. According to the Wyman linkage function, in a two-state equilibrium during ligand binding, equilibrium always shifts towards the state with greater binding. Between the native and unfolded states of the acidic fibroblast growth factor, polyanions bind to and shift the equilibrium towards the native state.¹⁰⁷ Similarly, zinc ions bind to the human growth hormone leading to a rise in the free energy of unfolding.¹⁴⁶ Compounds such as ammonium sulphate, sugars, and polyols provide stability to the native state of proteins, whereas guanidine hydrochloride and urea are known denaturants.^{147,148} This may occur due to a difference in solute binding to a protein in which some solutes prefer the folded (native) state over the unfolded state, and *vice versa*.

Sugars and polyols, which act as protein stabilizers and are added as co-solutes to solutions, inhibit aggregation and impart physiological osmolality in drug formulations. Exclusion of co-solutes from protein surfaces is preferential and varies with the ratio of solvent concentration to protein surface area.^{147,149} Preferential exclusion refers to the repulsive force of protein molecules observed when interactions between solvent and protein molecules are unfavourable. Exclusion increases as the surface area of the protein increases with protein unfolding, indicating a preference for the native folded state of proteins. Nicoud *et al.* has shown that the addition of sorbitol to glycosylated IgG1, in absence of a polyol sugar, delays the depletion of



monomers corresponding to the protein unfolding.¹⁵⁰ Furthermore, solutes that bind weakly to the protein surface negatively impact the rate of protein aggregation.

4.4 Salt type and concentration

Salts can affect the physical properties and stability of a protein by altering the protein conformation, solubility, and the rate of aggregation.^{151–153} The addition of NaCl alters the solubility equilibrium for the recombinant human tissue factor pathway¹⁵⁴ and causes a decrease in the aggregation speed of the recombinant factor VIII SQ.¹³⁷ In contrast, NaCl addition causes the rate of aggregation to increase for rhGCSF.¹⁵⁵ As explained earlier, cations and anions bind protein surfaces preferentially *via* unpaired charged side chains. When multivalent ions are present, they can bind to side chains and crosslink charged residues on the protein surface, stabilizing the native state of the protein.¹⁵⁶ However, ions can destabilize the native state of the protein *via* binding to peptide bonds, which have a partial negative charge on the carbonyl oxygen, and a partial positive charge on the amino group.¹⁵³ Electrolytes modulate the strength of electrostatic interactions between charged groups, both within the protein and between protein molecules. Thus, whereas intramolecular charge-charge interactions affect conformational stability, intermolecular electrostatic interactions affect equilibrium and the rate of aggregate formation.

Salt concentration is another vital parameter required for protein stability. A salt affects protein–protein interactions while also interacting with protein molecules. At high salt concentrations, ions primarily interact with a protein to shield and bind to the protein surface. This results in higher protein solubility while decreasing the thermodynamic stability,¹⁵² leading to destabilized protein folding and denaturation.¹⁵⁷ Metal salts can denature proteins and form insoluble metal–protein salts; for instance, silver nitrate was shown to cause fluorescence quenching of tryptophan in BSA.¹⁵⁸ Silver ion is a hydrophobic quencher that induces protein misfolding and unfolding, thereby distorting the native state of the protein. In contrast, low concentrations of salts reduce electrostatic interactions as the ions shield the charges instead of binding them. Thus, the type, number, and distribution of charges in a protein depend on the pH. Hence, the effects of salts vary greatly depending on changes in pH.

4.5 Processes

Various processes for manufacturing drug products (proteins) may influence the aggregation behaviour of proteins, as explained below.

4.5.1 Pumping and agitation. Pumping is a process used in filling (or packaging) of drugs into vials. Since the piston pump used in pumping contacts the protein surface, leading to the application of pressure and shear stress, it may lead to protein aggregation. Further, depressurizing may create air voids, which elevate protein aggregation.¹⁵⁹ Proteins such as hGH and IgG1 can withstand a shearing stress of $10\,000\text{ s}^{-1}$,¹⁶⁰ but insulin forms fibrils at a minimal shear of 150 s^{-1} .¹⁶¹ Another procedure

in drug manufacture is filling, which requires prior mixing of proteins to ensure homogeneity, using methods like stirring and suspended impellers that may cause protein damage and aggregation.¹⁶² However, multiple methods can cause agitation while mixing protein solutions such as vortexing, shaking, stirring, and rotating,¹⁶³ leading to aggregation in different proteins or peptides.^{140,164–166}

4.5.2 Drying and exposure to light. Protein aggregates form during freeze-drying and spray-drying,¹⁶⁷ possibly because of the partial removal of the hydration layer of the protein.¹⁶⁸ Further, exposure to light can cause protein degradation and the production of reactive oxygen species. Protein monomers may become more susceptible to aggregation after prolonged light exposure. The ultraviolet or visible light treatment of antibodies causes heavy aggregation,^{169,170} perhaps due to oxidation at trypsin and methionine residues that facilitate aggregation.^{171,172}

Sonication affects protein aggregation and causes partial unfolding due to an increase in temperature, pressure, and void formation.^{173,174} Additionally, the long-term storage of protein-containing syringes could produce particles and aggregates of protein due to the formation of radicals on exposure to radiation during the sterilization process.¹⁷⁵

5. Mechanism of protein aggregation

In 1954, Lumry and Eyring outlined a theory that laid the foundation for protein structure, stability, folding, and aggregation.¹⁷⁶ Aggregation is a common and critical issue during the synthesis and storage of proteins. The classic Lumry–Eyring model describes an irreversible protein denaturation in two steps:



where N indicates the reversible folding of the native protein and U indicates reversible modification of the unfolded protein, which produces F as the final state. Due to the limitations of the classic model, a revised version has been described for the quantitative analysis of irreversible aggregation and thermodynamics of the reaction. At elevated temperatures during transitions between folded and unfolded states of the native protein, protein unfolding becomes the rate-determining step. The extended model includes kinetics of conformationally mediated irreversible aggregation and also explains the effects of reversible conformations. It was recently used for explaining a decrease in nucleation and growth of aggregates when the temperature was changed from 4 to 30 °C in mAbs.¹⁷⁷ Each protein exhibits a unique stability pattern due to physical and chemical differences. We summarize three hypotheses to outline the mechanisms underlying protein aggregation (Fig. 4).

5.1 Systematic and reversible association of the native monomer

The reversible association hypothesis is valid for native and denatured proteins and starts with the aggregation of monomers into the growing aggregate. The hypothesis postulates that the tendency for reversible aggregation of a protein is intrinsic to its



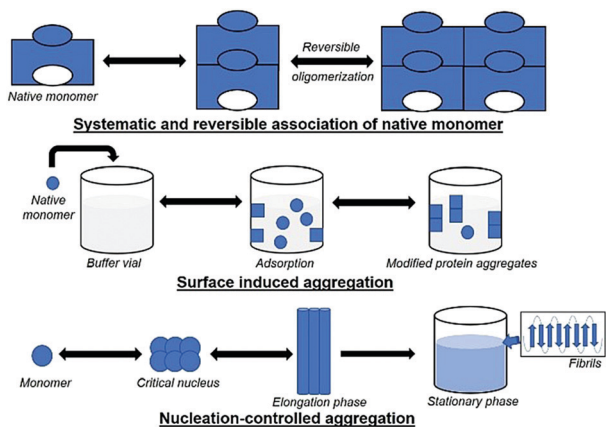


Fig. 4 Schematic illustration of the different modes of protein aggregation.

native form. In native monomers, self-association takes place and results in small reversible oligomers. The surface of protein monomers may have various complementary regions, which may provide multiple interface types with different patterns for the growth of oligomers, and multiple conformations for oligomers with identical stoichiometry. Insulin is an example of a therapeutic protein that readily associates to form reversible oligomers,¹⁷⁸ which can greatly affect its bioactivity; additionally, structural or conformational rearrangement in the aggregates could produce new entities.¹⁷⁹ An increase in the concentration of protein and the growth of oligomers may eventually cause aggregates to turn into irreversible forms; *e.g.*, interleukin-1 receptor antagonist (rhIL-1RA) forms reversible dimers that convert to irreversible dimers and trimers at high concentrations.¹⁸⁰ This mechanism has two types of variants, where (a) the conformation of monomers is altered, and (b) the monomer is modified chemically.

5.2 Conformationally altered monomer

In this mechanism type, the monomer does not associate reversibly. However, after partial refolding or owing to a change in conformation, monomers tend to associate strongly. Monomer changes to a non-native state usually occur when the amount of protein monomer is quite small. Conformational changes occur mostly by heat or shear stress, which facilitates protein aggregation. The conditions that stabilize or favour the native state inhibit the process of aggregation. G-CSF¹⁸¹ and interferon¹⁸² have been shown to exhibit this mechanism. This mechanism is predominant for many proteins and has been extensively discussed in multiple reviews.^{183,184}

5.3 Chemically modified products

In this mechanism, changes in the covalent structure of proteins due to chemical degradation such as proteolysis, deamidation, or oxidation of methionine occur, which may lead to the formation of new regions on the protein surface or result in a decrease in electrostatic repulsion between monomers. For example, the un-glycosylation or under-glycosylation of glycoproteins causes aggregation. Unlike the conformationally-altered monomer, modified protein monomers can be present in large amounts

and are a diagnostic feature of this mechanism. However, aggregates do not contain modified monomers exclusively and harbour non-modified monomers as well. Therefore, the enhancement of chemical stability can reduce aggregation. Importantly, chemically modified protein aggregates can be precisely immunogenic.¹⁸⁵

5.4 Surface-induced aggregation

Here, native monomers first bind to a surface to initiate the process of aggregation. Next, a conformational change in the monomer (*e.g.*, to increase the contact area with the surface) may occur. The driving forces could be hydrophobic or electrostatic interactions, based on the nature of the surface. The mechanism is different from those described previously for conformationally-altered monomers, as aggregation takes place at the surface or after the detachment of monomers into the solution. Freeze/thaw damage can also lead to protein aggregation due to instability resulting from temperature changes which can occur *via* surface-induced aggregation. Aggregate formation at the surface of ice crystals or due to a change in pH may also occur. Processes involving induction of shear forces or agitation can cause long exposure to surfaces and lead to changes in protein conformational stability (as discussed in the case of conformationally altered monomers). Thus, it is difficult to identify the actual stress that causes protein aggregation.

5.5 Nucleation-controlled aggregation

In general, aggregation initiates *via* formation of a nucleus, which grows and accumulates with time, leading to insolubility and precipitation of the protein. The accumulation of insoluble aggregates results in lower or no bioactivity of a protein, loss of cellular function, and high toxicity due to disturbed intracellular transport. This mechanism is well-studied, and the formation of aggregates takes place slowly in a lag phase, followed by an elongation (exponential) phase, and a final plateau. For some proteins, the lag phase arises due to an energy barrier for nucleation resulting from the free energy required to create an interface between a solid particle of protein and a liquid (solvent), and it varies with the size of the aggregates. Here, the probability of production of small or mid-sized oligomers is low. Therefore, the formation of moderate-sized aggregates is called the “critical nucleus/seed”, which probably converts to larger species by the addition of monomers at a fast rate. The lag phase is fairly slow, with no visible changes over a long period, followed by sudden changes in the size of aggregates leading to precipitation. Moreover, the formation of nuclei may vary with orientation and may prefer a lower free energy for initiation. Fibril formation is an example of nucleation-controlled aggregation. In some cases, the rate-limiting step can involve the formation of a pre-nucleus species. In α Syn, the pre-nucleus entity formed on protein oxidation is a dityrosine-crosslinked dimer,¹⁸⁶ and the rate of nucleation increases rapidly when the dimer concentration is ~ 1 –2% of the total protein population. Starting with preformed dimer species (called seeding) could quickly result in fibril formation. Nucleation can be of homogenous or heterogeneous type.



In the former, as described above, the critical nucleus is itself a product aggregate. In the latter type, the nucleus/seed can be a contaminant instead of a protein. For example, silica (shed by vials) or steel particles (shed by piston pumps during the filling process) act as the nucleus/seed for aggregation.^{187,188} After a lag phase, monomers convert to oligomers, leading to β -sheet formation, which are intermediate structures known as protofibrils, eventually forming fibrils till the final plateau phase occurs.

6. Characterization of protein aggregation

Protein aggregates induce immunogenic responses that can be fatal. Several techniques are widely used for the qualitative and quantitative analysis of protein aggregates and amyloid particles. In this section, we discuss the diverse analytical methods used for the characterization and identification of aggregates, ranging from simple investigations to sophisticated analytical methods that require expertise. Changes in molecular weight, conformational state, shape, and size are some of the physicochemical properties studied to investigate aggregation. A few commonly used techniques for the detection and characterization of protein aggregates are outlined in Table 2.

6.1 Separation-based methods

Protein-based pharmaceuticals such as interferons and human growth hormones are genetically engineered. At times, the resultant proteins are unsteady, resulting in aggregation that affects their biological activity. Chromatography is a convenient and versatile technique to precisely monitor aggregation.

6.1.1 Size exclusion chromatography (SEC). The standard SEC is an effective method for the analysis and purification of proteins.²²⁸ SEC is used to determine and characterize protein aggregation. Speed and reproducibility are the two features of SEC that are important for validation and routine analyses.¹⁹⁰ The elution, sizing, and quantification of aggregation can be easily observed using the peak areas.²²⁹ Various studies have been performed on the stable amyloid-beta ($A\beta$) early oligomers using SEC.^{230,231} The $A\beta$ monomers form dimers and higher-order oligomers and have been investigated by analytical SEC.²³² Although SEC is crucial for the isolation and separation of well-defined monomers and oligomers.^{233,234} The method has limitations such as not being able to detect protein shape and large sub-visible protein aggregates. Further, a range of SEC columns is required for the efficient separation of monomers, dimers, and large aggregates.²³⁵ The adsorption of protein monomers and aggregates on column matrices is an important issue that affects characterization by SEC. These aggregates can be characterized by complementary methods such as ultracentrifugation, as discussed in the next section.

6.1.2 Analytical ultracentrifugation (AUC). AUC is used for investigating the homogeneity of proteins/peptide solutions and to examine the molecular weight over a broad range from a few kDa to MDa.²³⁶ The method uses the sedimentation characteristics of different sizes of aggregates. Factors such as mass, size, shape, and gravity are crucial for this approach.²³⁷ Two components are involved in the characterization of heterologous protein-protein interactions; sedimentation velocity (SV-AUC) and sedimentation equilibrium (SE-AUC).²³⁸ In SV-AUC, molecules sediment toward the bottom of the cell due to the relatively high centrifuge speed. In SE-AUC, the centrifugal speed

Table 2 Summary of the various techniques used to identify and separate protein aggregates

Classification	Method	Aggregate size	Pros	Cons	Ref.
Separation-based methods	SEC	1–50 nm	Short-run and quantitative analysis	Large sub-visible aggregates cannot be analysed	189 and 190
	AUC	1–100 nm	High resolution, quantification of proteins	High concentration required, expensive	191 and 192
	FFF	1 nm to few μ m	No stationary phase requirement, broad size range possible	Less robust, concentration dependence	191, 193 and 194
Scattering-based methods	SLS	1 nm to few μ m	Detection of several absolute parameters (radius of gyration, molecular weight)	Not applied for low molecular weight solutes	195 and 196
	DLS	0.1–5 μ m	Less sample required, high resolution	Highly sensitive to temperature, presence of any large particle or dust can interfere	197 and 198
Imaging-based methods	TEM	0.1 nm to few cm	High powerful magnification and resolution	Not quantitative, expensive, time-consuming	199 and 200
	AFM	0.1 nm–100 μ m	Non-destructive imaging, easy sample preparation	Limited magnification range	199, 201 and 202
Calorimetric-based methods	DSC	N/A	Specific for thermal stability assay of proteins	Low accuracy and precision	203–205
Spectroscopy-based techniques	ITC	N/A	Enables quantitative determination	Large sample volume required	206–209
	UV-vis	N/A	Non-destructive, quick analysis, easy to use	Lack of sensitivity and selectivity	210–213
	CD	N/A	Simple and quick technique, secondary structure detection	Interference by buffer components	214–217
	FT-IR	N/A	Fast solid-state analysis possible	Low sensitivity	218–220
X-ray scattering techniques	NMR	N/A	High reproducibility, useful for protein folding	Requires concentrated samples, which may lead to aggregation	221–223
	XRD	N/A	Provides information about 3D protein aggregate structure	Crystal production required, time-consuming	224 and 225
	SAXS	1–100 nm	Provides information about various stages of aggregation	Expensive, limited availability	226 and 227



applied is relatively lower, and the concentration of a protein is determined as a function of the radial distance from the centrifugal cell.²³⁸ However, the flux of the centrifugal force (by the sedimenting molecules and by the concentration gradient, *via* diffusing molecules) is exactly balanced and in equilibrium.²³⁹ SV-AUC is used to investigate the sedimentation coefficient, while SE-AUC is used to characterize the associating species, molecular weight, and association constants. In a study by Gabrielson *et al.*, SV-AUC was used with other techniques to characterize the aggregation of a recombinant mAb. They demonstrated that SV-AUC is better for estimating aggregates compared to SEC.²⁴⁰ Owing to various factors, such as the adsorption of particles onto the stationary phase, SEC may result in artefacts.¹⁹⁰ In addition, the mobile phase could induce changes in pH and salt concentrations in solutions, leading to the disruption of aggregates, which can affect the analysis.²⁴¹ These problems can be avoided using SV-AUC. Moreover, SV-AUC can reveal important information to provide insights into the mechanisms of aggregation. Different solvent conditions can be used for the efficient measurement of AUC.²⁴² The method requires expertise to perform experiments and interpret the complex output data. Additionally, factors such as co-solutes, high buffer concentrations, and the non-ideality of the system could influence the data.²⁴³ The data accuracy and reproducibility can be improved by appropriate instrument configuration during data interpretation.

6.1.3 Field flow fractionation (FFF). Field-flow fractionation (FFF) is a separation tool used for the characterization of proteins, polymers, complex colloids, and nanoparticles in solution.^{244,245} It is used to isolate particles ranging in size from nanometers to the micrometer range and does not require a stationary phase. The process of separation starts with a sample being injected into an asymmetrical thin channel, and the molecular species are transported along a mobile phase in laminar flow.²⁴⁶ The smaller particles readily diffuse back to the laminar flow, and are eluted from the flow channel before the larger particles.²⁴⁷ FFF has been efficiently used for the characterization of large aggregates, such as for IgGs.²⁴⁸ However, this method is hard to validate and cannot be utilized as a standard analytical method because it is largely restricted to analysing soluble antibody aggregates and requires expertise to achieve reliable and reproducible outcomes.

6.1.4 Sodium dodecyl sulphate-polyacrylamide gel electrophoresis (SDS-PAGE). The separation of macromolecules can be easily achieved using electrophoresis. Various components can affect separation, such as net charge, shape, viscosity, size, and medium composition.²⁴⁹ SDS-PAGE is a commonly used technique for the characterization and detection of proteins²⁵⁰ and has various advantages such as ease of handling; it can also provide information about the molecular weight of proteins. This technique allows for quick analysis and requires minuscule amounts of samples for high throughput analysis.²⁵⁰ SDS-PAGE is commonly used to estimate protein purity and shows a single band for highly purified protein samples. Moreover, it can be used to distinguish between covalent and non-covalent aggregates because SDS disrupts non-covalent aggregates, thus allowing the identification of covalent aggregates. Notably, this method is used to detect aggregate sizes with weights ranging from *ca.* 5 to 500 kDa.²⁵¹

6.2 Scattering-based methods

The size of protein aggregates can range from microscopic to macroscopic in scale, which can be analysed using simple techniques. Often, they can be detected with the naked eye because of the change in turbidity or large aggregates clumping together. Various promising technologies using visual inspection and quantification methods can detect the aggregation of therapeutic proteins in a reproducible manner, as discussed below.

6.2.1 Light scattering. Light scattering is used to detect and characterize protein aggregates. Its ready availability and ease of operation make it the technique of choice to study protein aggregation. Several techniques have been developed to monitor aggregation and are discussed below.

6.2.1.1 Static light scattering. Static light scattering is used for investigating parameters such as molar mass and the radii of biological macromolecules such as protein aggregates in solution.^{252,253} It measures the intensity of scattered light and using Rayleigh's theory, helps estimate the molecular weight of particles, which is proportional to the intensity of scattered light, with larger particles scattering more light than smaller particles. SLS measurements are generally taken at different angles to determine parameters such as the radius of gyration, which is used to predict the compactness of protein structure.²⁵⁴ Further, SLS can be used in combination with other methods like FFF to provide better resolution and help determine the molecular weight of different species in a solution to determine the extent of aggregation.

6.2.1.2 Dynamic light scattering (DLS). DLS is a scattering method used for investigating the distribution of particle size with a diameter range of 1 nm to 5 μm .^{255,256} In contrast to SLS, which measures the intensity of scattered light depending on angle or concentration, DLS measures fluctuations of scattered light in time. An autocorrelation function helps data interpretation to yield parameters such as size distribution, mean hydrodynamic radius, and polydispersity. DLS is used to monitor the aggregation process as small aggregates can be detected, and has helped determine the aggregation kinetics of A β , αSyn , and huntingtin.^{257,258} DLS is a simple technique and provides fast and accurate information; however, it cannot reliably provide accurate quantitative information as it cannot differentiate between the various stages of aggregation.

6.2.2 Imaging-based methods. Modern microscopic techniques such as electron microscopy (EM) and atomic force microscopy (AFM) have overcome the resolution limit of light microscopy.²⁵⁹ Ultrastructural imaging tools such as transmission electron microscope (TEM) and AFM are useful techniques that are used to analyse protofibrils and amyloid fibrils containing different numbers of strands.²⁶⁰ The use of microscopy is essential for the morphological investigation of large amyloid fibrils, which cannot be observed by conventional light microscopy.²⁶¹ TEM and AFM can be used independently with the Thioflavin T assay to detect the presence of fibrils. EM has been used to characterize amyloid fibrils consisting of unbranched fibrils.^{261,262} However, a drying and coating (staining) process is required for sample preparation



that could affect data analysis, the original state of the sample, or result in the formation of aggregates.²⁶³ Artifacts can be introduced if the sample is not prepared carefully. A variant technique known as cryogenic-TEM (cryo-TEM) is used in such instances, to enable the exploration of unstained samples using cryogenic temperatures, which is usually achieved using liquid nitrogen. It allows the investigation of the native and hydrated state of proteins as sample drying is not required. Detailed and precise results can be achieved for protein targets which are usually difficult to obtain using ordinary electron microscopes.^{264,265} Cryo-EM has also been used for the observation of α Syn, which is a presynaptic neuronal protein associated with Parkinson's disease (PD).^{266,267}

Scanning transmission electron microscopy (STEM) is a method similar to TEM but incorporates certain features of SEM and can be used to decipher the organization of amyloid aggregates. Like cryo-TEM, STEM does not require sample staining and is used in molecular biology to analyse the structure of biological molecules. It also provides better spatial resolution. Scattered electrons can be observed to obtain intensities that are proportional to the mass of the irradiated region.²⁶⁸ Subsequently, the mass per length (MPL) of the sample can be investigated by observing the incident electron beam flux under certain conditions. STEM has been used for the determination of the secondary structure of amyloid fibrils.^{269–272} The MPL calculation has been used to characterize the β -helix-like structure of the HET-s prion (HET-s218–289) protein fibrils, in which peptide molecules spanned 2 turns of the β -helix.²⁷³

AFM is an imaging technique used to visualize sample topography. It provides high-resolution information about the size, structure, stage, and distribution of aggregates, especially amyloid aggregates. AFM has been used to characterize low molecular weight oligomers,^{274,275} insulin fibrils,^{276,277} conjugated IgG aggregates,²⁷⁸ and other fibrillar systems such as collagens,^{279–281} fibrillogenesis,²⁸² and silk protein fibrils.²⁸³ Additionally, it provides information on the height, contour length, and periodicity of the fibril structure. AFM has multiple advantages, such as enabling work in normal atmospheric pressure and room temperature conditions, high-resolution imaging at the molecular level, and the ease of sample preparation. Moreover, liquid samples can also be analysed using AFM at the physiological temperature.^{284,285} However, the slow speed scan rate and small scan area are a drawback of this technique. Still, AFM is a powerful and robust technique for investigating protein aggregation.

6.2.3 Calorimetry-based methods. Calorimetric techniques are versatile biophysical methods that enable the investigation of kinetic and thermodynamic stability for identifying the full profiles of aggregation. Detailed thermodynamic behaviour of misfolded and aggregated proteins can be analysed using various calorimetric techniques.

6.2.3.1 Differential scanning calorimetry (DSC). DSC is a cost-effective method used for determining the thermodynamic aspects of protein stability and unfolding in terms of the thermal transition temperature (melting temperature, T_m), and the energy needed to disturb the interactions stabilizing

the tertiary structure (enthalpy, ΔH) of proteins.²⁰⁴ Protein samples are subjected to temperature changes, and the native state of the proteins undergo conformational alterations and the heat change is recorded. DSC can measure the ΔH associated with protein unfolding and the heat capacity (C_p) for denaturation. The water molecules next to the hydrophobic domains of the protein's surfaces are usually more ordered and strongly bound, resulting in greater hydrogen bonding between water molecules and the formation of a clathrate-like structure.⁷⁰ On increasing the temperature, the highly ordered water molecules tend to reorganize and become more disordered, generating a large heat capacity.

The unfolding of the protein due to temperature yields the enthalpy (ΔH) due to the disturbance of hydrophobic interactions, and can be determined by the heat capacity of the sample relative to temperature.²⁸⁶

$$\Delta H = \int_{T_1}^{T_2} C_p dT$$

Entropy (ΔS) can be determined from the area under the curve of C_p/T vs. T .

$$\Delta S = \int_{T_1}^{T_2} \left(\frac{C_p}{T} \right) dT$$

In one study, the thermodynamic characterization of lysozyme was investigated *via* stabilizing and destabilizing interactions using the DSC method.²⁸⁶ DSC has several advantages such as high precision temperature control and the direct observation of protein folding. However, this method may provide misleading information about misfolding and aggregation due to the large size and heterogeneity of aggregates, since larger sticky aggregates may stick on DSC cell surfaces and produce noise in the DSC thermogram.

6.2.3.2 Isothermal titration calorimetry (ITC). ITC is used to determine the binding and kinetic events associated with ligand or excipients induced aggregation. ITC was initially used for determining Gibbs free energy, and is used for monitoring biomolecular interactions such as between enzymes and substrates.^{287,288} In contrast to DSC, which uses a constant temperature between the sample and the reference while the power used is variable, ITC measures the variation in temperature between the sample and the reference when using the same power. During the process of heat release or absorption, a signal can be detected, indicating binding between the two reactants. The variation in heat is represented as the change in Gibbs free energy ($\Delta G = RT \ln K_D$), where K_D is the dissociation constant indicating the binding affinity between the interacting molecules. ITC is a quantitative technique used specifically for studying intermolecular interactions for proteomics and pharmacogenomics applications.²⁸⁷ Additionally, ITC can determine the binding affinity and binding stoichiometry of molecules. In ITC, sample concentration is an important parameter for obtaining reliable data, and care needs to be taken to avoid small molecule impurities and changes in pH, which can generate non-reliable thermograms.

6.2.4 Spectroscopy-based techniques. Spectroscopic methods enable the investigation of different assemblies of protein aggregates. Compared to other techniques, spectroscopy is an



accessible and reliable technique that provides detailed information in a relatively short time. Some of the spectroscopic methods used to probe protein aggregation are discussed below.

6.2.4.1 UV-vis spectroscopy. UV-absorption spectroscopy is a rapid, safe, high-resolution technique which is used extensively to investigate protein aggregation. The thermodynamic and kinetic modes of protein aggregation, changes in protein conformation, and dynamic fluctuations can be investigated *via* observing the change in turbidity using UV-vis spectroscopy.^{289,290} An increase in absorbance in the non-absorbing region is used to predict the extent of aggregation.²⁹¹ The measurement of turbidity or cloud point is used to uncover details of protein unfolding.²⁹² The standard equation for determination of the turbidity is:

$$\text{Turbidity } (\tau) = -\ln(I/I_0),$$

where I_0 and I are the intensity of the incident and transmitted light, respectively. Further, the aggregation index (AI) can be also calculated by UV-vis using the equation:

$$\text{AI} = A_{350}/(A_{280} - A_{350}) \times 100,$$

where A_{280} and A_{350} are the measured absorbances at 280 and 350 nm, respectively.

The AI parameter can be straightforwardly used for determining protein content.^{293–295} However, this method may not be universally applicable for all conditions of proteins, with or without excipients, though the kinetic study of turbidity is often utilized in the field of protein pharmaceuticals to characterize the inhibitory effect of protein aggregation.²⁹³

6.2.4.2 Dyes and extrinsic fluorescent probes. Certain extrinsic dyes can provide details about the folding and unfolding of proteins.²⁹³ Dyes have been used for the determination of amyloid fibrils and to study the extent of aggregation (Fig. 5).²⁹³

The fluorescence of the protein sample mixed with dye is measured and any change in the fluorescence signal in terms of wavelength shift (blue shift: hydrophobic environment; red shift: hydrophilic environment) or intensity change is recorded. A protein undergoing structural change will interact with dyes differently than proteins in their native state, and this information can assist in quantitatively determining protein aggregation. One such dye is Congo Red (CR), which is often used for investigating

amyloid fibrils that are rich in β -sheet content, yielding a characteristic apple-green birefringence under polarized light.²⁴⁰ Although this measurement using CR is easy and gives quick results, it poses certain challenges, as reports show that CR can interfere with protein structure. A recent study showed that CR triggered the β -sheet formation and peptide aggregation of A β 1–40, and induces a β -sheet rich conformation in other amyloidogenic peptides.^{296,297} However, CR has also demonstrated a positive effect by suppressing the formation of fibrils, and has been found to be effective for modelling certain neurodegenerative diseases.²⁹⁸

Thioflavin T (4-(3,6-dimethylbenzothiazol-2-yl)-*N,N*-dimethylaniline; ThT) is another extensively used dye as a fluorescent probe for the analysis of fibril formation. It can be used for *in situ* observation and does not affect amyloid formation kinetics.²⁹⁹ Usually, ThT imparts a strong fluorescence signal after binding with amyloid fibrils at 482 nm, after excitation at 450 nm.³⁰⁰ An increase in fluorescence intensity or a red shift is observed on binding with β -sheet rich structures such as amyloid fibrils. The exact mechanism of interaction between CR or ThT molecules with amyloid fibrils is not completely understood. A widely believed theory is that the intercalation of ThT molecules takes place between the grooves of the amyloid fibril parallel to the fibril axis.^{301–303} The extension of the torsional angle between the benzothiazole and benzene rings varies from 37 to 90 degrees.³⁰⁴ ThT-fibril binding and steady-state ThT fluorescence emission is observed at 490 nm when excited at 440 nm when the sample contains fibril structures and the aggregated material can be estimated using a standard curve showing linearity between fluorescence intensity and protein concentration. At high concentrations of amyloid fibril, a saturation effect may take place where ThT cannot be used reliably.³⁰⁵ Further, a few amyloid fibres do not interact with ThT and in a few other cases, ThT has been found to interact with the excipients, generating false results. Thus, the results should be verified by investigating the ultrastructure of the aggregate.

Other dyes such Nile Red and Bis-ANS are frequently used for the evaluation of protein aggregation. Bis-ANS does not exhibit fluorescence in aqueous solution and shows fluorescence only in the presence of hydrophobic moieties.³⁰⁶ Hence, misfolded and aggregated proteins can be detected using ANS. However, in a few cases, the ANS dye does not exhibit fluorescence due the large size of Bis-ANS, which prevent its inclusion into protein aggregates.

These studies demonstrate that extrinsic fluorescent dyes are extremely versatile and can be used for monitoring aggregation. However, they have their limitations and cannot be used universally to investigate protein aggregation. Therefore, proper care needs to be taken to observe the presence of any unwanted interactions (either between dye and protein, or dye, and excipients), and the results need to be correlated with other methods discussed in this review.

6.2.4.3 Circular dichroism (CD) spectroscopy. CD is a powerful technique used in the investigation of different orders of

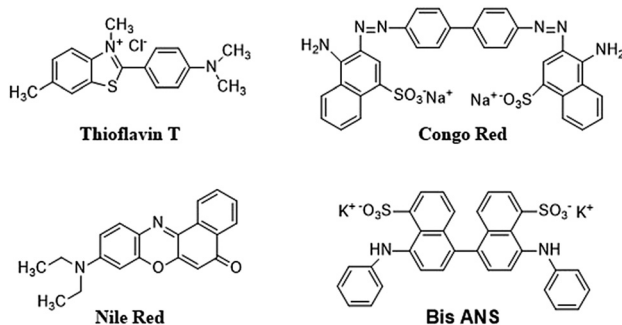


Fig. 5 Chemical structure of extrinsic dyes used for the detection of aggregated proteins.



protein structure, including the α -helix, β -sheet, β -turns, or random structures. CD employs circularly polarized light which is made to pass through an optically active solution like those containing proteins. This induces differences in the 2 components of circularly polarized light (left and right) in terms of speed, wavelength, and the extent of absorption. The difference in molar absorptivity of proteins for the 2 components is referred to as molar CD. CD has various advantages such as simple operation, high precision, effectiveness, investigation of the absolute configuration, and it can reveal secondary protein structure.³⁰⁷ Consequently, CD has been extensively used for the analysis of protein folding and unfolding.³⁰⁸ Measurements are usually taken between the far UV and near UV wavelength range (180–320 nm), which enables the efficient characterization of distinctive secondary structural elements of proteins. Commonly, the secondary structure of proteins is affected by temperature, pH, ligand, denaturation, heat, mutation, and binding interactions.³⁰⁹ Investigating the resultant CD signals and observing the difference between the native and the aggregated state can assist in understanding aggregation at the molecular level. The contents of higher-order protein structures can also be evaluated by various methods.^{310,311} Further, measuring CD at a particular wavelength as a function of temperature can be used to estimate the degree of unfolding.³¹² An advanced version of CD known as vibration circular dichroism which is related to infrared spectroscopy can be used to investigate the sensitivity and chirality of the supramolecular architecture of fibrils.³¹³ Additionally, far UV-CD (FUV-CD) can be used to investigate the kinetic and thermodynamic information for changes in protein secondary structure.³¹³ However, the sensitivity of CD is low for data interpretation, and therefore, appropriate controls are needed for obtaining structural information.

6.2.4.4 Fourier transform infrared spectroscopy (FTIR). FTIR is usually employed for analysing changes in the secondary structure of proteins post denaturation or aggregation. It is responsive to the amide I band ($\sim 1650\text{ cm}^{-1}$) and is usually responsive and dependent on the secondary structure.³¹⁴ This method is relatively sensitive to the secondary structure of insoluble proteins such as inclusion bodies,³¹³ heat-gelled proteins,⁶² and amyloid fibrils.³¹⁵ FTIR is used extensively for the characterization of the alignment of β -strands in $A\beta$ oligomers, amyloid fibrils *in vitro*, and the study of conformational dynamics.³¹⁶ A detailed discussion on the use of FTIR for the analysis of protein structure can be referred to in the review by Haris and Severcan.³¹⁴

6.2.4.5 Nuclear magnetic resonance (NMR) spectroscopy. NMR spectroscopy is widely used for the analysis of protein aggregation, as it can reveal information on dynamic properties such as relaxation and diffusion.³¹⁷ The motility of proteins and inter-nuclear distances are a few components that can provide details of dynamics and structure. A study of relaxation times can reveal information about the exchange kinetics of monomeric $A\beta$ and oligomeric $A\beta$ protofibrils.³¹⁸

Using the NMR method, information on β -strand segments, backbone torsional angles, arrangement of β -strands in parallel

or anti-parallel β -sheets, and the relative orientation of β -sheets can be obtained. In one study, fibril formation for α Syn was measured using paramagnetic relaxation enhancement (PRE) NMR to investigate the heterogeneously disordered monomers.³¹⁹ Further, NMR can be used to investigate changes in amino acid residues, which can reveal the possible mode of denaturation.³²⁰ Folded proteins yield a broad range of chemical shifts, whereas denatured proteins exhibit a relatively narrow range of chemical shifts.³²¹ NMR can be used to examine the interaction of any excipient with the protein by observing the individual amino acid residues to reveal the mode of aggregation, or the protection from aggregation.³²² In a recent study by Taraban *et al.*, water NMR was compared with other characterization techniques such as SEC, DLS, and others, and NMR outperformed them, proving to be more effective and sensitive for detecting changes in soluble and insoluble protein aggregates.²²¹ Time-consuming investigation of the relaxation analysis, peak assignments, and the inability to characterize larger aggregates are some of the limitations of solution NMR. However, solid-state NMR (ssNMR) can elucidate the structure, dynamics, and kinetic aspects of protein folding and aggregation, and can determine the intermediate states of amyloid proteins^{323–325} and mutation of proteins.³²⁶ Moreover, ssNMR can be used to characterize the large insoluble aggregates. Tycko *et al.* have demonstrated the use of solid-state NMR for the characterization of the structure of $A\beta$ fibrils in brain tissues.³²⁷

7. Protein aggregation inhibitors

Multiple strategies have been developed for inhibiting aggregation. One method to change the protein structure uses site-directed mutagenesis, which is effective under certain conditions.^{328–330} Tirrell *et al.* have shown that insulin denaturation can be prevented by the modifying it *via* replacement of the proline residue at position 28 (ProB28) with different groups.^{331,332} However, this strategy cannot be applied universally for the stabilization of proteins as the modification may result in proteins losing their activity.³²⁸ Another method is to add external additives (excipients) which change the environment around the protein to enable them to retain their native structure even when subjected to severe stress. In the following sections, we describe excipients as small molecules and polymeric molecules and discuss the various sub-categories and mode of action of these molecules in protecting the proteins' structure.

7.1 Small molecules

For inhibiting protein aggregation *in vitro*, several techniques have been developed such as the use of molecular chaperones, pH control, temperature, ionic strength, and protein concentration. However, a simple and practical approach is the use of small molecules as additives that can act as protein aggregating inhibitors. Additives such as proline,³³³ polyamines,³³⁴ guanidine,^{335,336} and polyphenols have been used and are discussed in this review. Some of the well-known classes of small molecule inhibitors are briefly discussed in Table 3. For detailed discussions, refer to other reviews.^{16–18,20,337}



Table 3 Summary of the small molecules used for protein aggregation inhibition

Category	Inhibitors	Mechanism of action	Target protein	Ref.
Molecular tweezers	CLR01	Fibrillogenesis inhibition	A β , IAPP, transthyretin, insulin	338 and 339
Metal chelators	Pentosan polysulphate Deferoxamine, clioquinol	Important role in protein misfolding pathologies	Prions α -Synuclein	340 and 341
Nanoparticles	BAM (<i>N</i> -isopropylacrylamide: <i>N</i> - <i>tert</i> -butylacrylamide) Fe ₃ O ₄ magnetic CDTe	Fibrillogenesis inhibition Aggregates disintegration	A β , IAPP, lysozyme	342–344
Peptide	Polyglutamine-binding peptide, A β peptide (KLVFF)	Fibrillogenesis inhibition	A β , polyglutamine	345–347
Phthalocyanines	Zn(II) and Ni(II) derivatives of phthalocyanine	Fibrillogenesis inhibition Aggregate disintegration	α -Synuclein, A β	348 and 349
Polyamines	Arginine, spermine, spermidine, putrescine, monoamines, diamines	Conformational change prevention Fibrillogenesis inhibition Aggregate disintegration	Immunotoxin, lysozyme	334–336 and 350–354
Polyphenols	Curcumin, EGCG, apigenin, resveratrol	Conformational change prevention Fibrillogenesis inhibition Aggregate disintegration	A β , α -synuclein, HEWL, IAPP, insulin	355–361
Vitamins	Vitamin E Vitamin C Vitamin B12	Conformational change prevention Fibrillogenesis inhibition Aggregate disintegration	A β , α -synuclein Insulin	362–366
Non-detergent sulfobetaine	NDSBs, choline- <i>O</i> -sulphate	Interacting with early folding intermediates Fibrillogenesis inhibition	A β , β 2 subunit (Tryptophan synthase), lysozyme	367–371
Osmolytes	Raffinose, betaine, hydroxyproline,	Disintegration of amyloid fibrils Preferential hydration and polar interaction, disrupting inter-oligomer interactions	TGF β 1p, insulin, BSA	372–374

7.1.1 Amino compounds. Arginine is a well-known protein aggregation inhibiting agent that works in various situations.^{335,336} Certain characteristic structural properties of arginine like the presence of a hydrophobic alkyl chain, an amine group, hydrogen bond accepting carboxylate moiety, and having guanidinium as functional group allow it to interact with the protein surface or hydrogen bond accepting groups. Additionally, its zwitterionic structure provides two ionic charge regions making arginine an ideal protein inhibiting agent. Arginine increases the yield of refolded proteins such as immunotoxin,³⁵² antibody fragment,³⁵⁴ and lysozyme,³⁵³ however it affects the protein stability and structure. Tsumoto *et al.* have studied the interaction between arginine through its guanidine group and tryptophan side chains on protein surfaces, which reduces protein aggregation.³⁷⁵ Although widely used, the mechanism of action of arginine is not yet clear. A widely accepted belief is that an interaction exists between the protein and arginine *via* aromatic-guanidinium and electrostatic interactions. However, despite its beneficial properties, arginine does not solve the protein aggregation problem completely, and the development of better additives was required.

Kudou *et al.* focused on some naturally occurring polyamines [spermine, NH₂(CH₂)₃NH(CH₂)₄NH(CH₂)₃NH₂; spermidine, NH₂(CH₂)₃NH(CH₂)₄NH₂; putrescine, NH₂(CH₂)₄NH₂] as small molecules for preventing the heat-induced aggregation and inactivation of proteins. Further, they studied the effects of some additives on the heat-induced aggregation and denaturation of lysozyme.³³⁴ Monoamines, diamines, and diols were selected to examine the effects of multivalent amines, chain length, and charge on the inhibition of protein. The protein thermal aggregation inhibiting curve of lysozyme was found to be almost identical to lysozyme with 1,5-diaminopentane, although diols and monoamines did not prevent the thermal inactivation of lysozyme.

In 1998 T. K. S. Kumar *et al.*, proposed that proline with a concentration > 3 M behaves as an enzyme stabilizer as well as a protein solubilizing solute.³⁵⁰ The amino acid, proline, shows solubility in water, and at higher concentrations, it behaves like a hydrotrope.³⁵¹ Due to these properties, proline was investigated for its role as a protein-folding chaperone. It has been reported that proline at concentrations > 3 M forms an amphipathic supramolecular assembly and successfully thwarts the aggregation associated with the refolding of bovine carbonic anhydrase. In another study, Choudhary *et al.* reported the inhibition of the protein fibrillation of lysozyme and insulin by proline and sorbitol.³⁷⁶ Proline contains a closed ring structure in its side chain which has a hydrophobic surface, which enables it to interact with proteins through hydrophobic interactions.

7.1.2 Polyphenols. Polyphenols are a large group of naturally occurring chemical compounds, though synthetic and semi-synthetic molecules having one or more aromatic phenolic rings have also been documented. Various polyphenols from natural products like green tea, grapes, and red wine have been reported to inhibit protein aggregation both *in vitro* and *in vivo*.³⁷⁷

Curcumin is a yellow substance present in turmeric ((1*E*,6*E*)-1,7-bis(4-hydroxy-3-methoxyphenyl)hepta-1,6-diene-3,5-dione). It has many beneficial anticancer, antioxidant and antiviral properties, and has also been investigated for its anti-aggregation properties in proteins. Curcumin has been reported to inhibit the aggregation of proteins such as A β , insulin, lysozyme, synuclein, prion protein, and lysozyme from hen egg white (HEWL).^{355,356} Owing to its lipophilic nature, curcumin can easily cross the blood-brain barrier and binds with amyloids, thereby destabilizing their oligomeric forms and inhibiting amyloid formation.³⁵⁷ Curcumin can have different modes of action for different proteins, such as preventing the conformational changes in the protein, disaggregating the



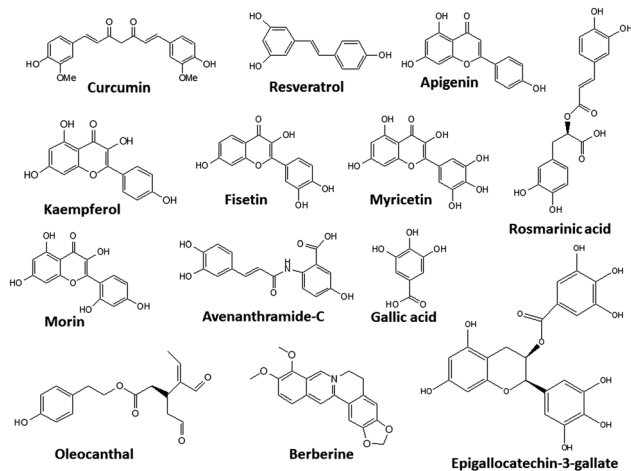


Fig. 6 Chemical structures of some polyphenols.

formed aggregates, and inhibiting fibrillogenesis. Unfortunately, its wide application is limited due to its pharmacokinetics, which disfavours its bioavailability, and several derivatives have been synthesized to overcome this issue.^{378,379}

Another polyphenol, (–)-epigallocatechin-gallate (EGCG), which is mainly found in green tea³⁵⁸ has been shown to have antibacterial, antioxidant, neuroprotective, and antitumor activity both *in vitro* and *in vivo*.^{359,360} EGCG shows promising results for the inhibition of proteins such as A β , tau, α Syn, IAPP, TTR, and Htt; however, the mechanism involved is still unclear.

Another compound, rosmarinic acid has the potential to inhibit amyloid fibril generation and can destabilize preformed fibrils similar to curcumin.³⁶¹

A large number of polyphenols have been reported, and some of their structures are shown in Fig. 6.

7.1.3 Peptides or peptidomimetics. Peptidomimetics are protein-like small chain molecules that mimic peptides. They can be developed either by modifying the existing peptides or by chemical synthesis. Recently, peptide-based conjugates have been reported as inhibitors in diseases linked to amyloid formation, and these function by interfering with protein aggregation.³⁸⁰ Diseases linked to amyloid formation can be alleviated by interfering with protein aggregation. Many studies have reported the targeting of A β , whose aggregation is the initial event in Alzheimer's disease.³⁸¹ Diseases related to polyglutamine (PolyQ) protein aggregation can be inhibited by PolyQ binding peptide 1 (QBP1). QBP1 can also be used as a general therapeutic agent in several neurodegenerative diseases.³⁴⁵ In another study, the inhibition of A β 42 aggregation was reported by using a peptide dependent on the core sequence of the A β peptide (KLVFF). In these modulator peptides, a non-amino acid molecule with multiple hydrogen bond donor–acceptor sites was introduced to target A β 42 β -sheet formation.³⁴⁶ Joana A. Lourerio *et al.* introduced the concept of fluorinated peptides that act as a beta-sheet breaker.³⁴⁷ The group showed that the fluorine atom can prevent A β aggregation, and the fluorinated peptides act as fibrillogenesis inhibitors. ThT assay studies showed that two fluorinated peptides (LVF₇FD-PEG and LV₇FFD-PEG) were able

to delay the aggregation of A β . A limitation with these systems is that the peptide-based structures can undergo enzymatic degradation, resulting in a short half-life in the bloodstream and poor bioavailability in tissues and organs, preventing their use as therapeutic agents.³⁸² *In vivo* stability and distribution remains a challenge; therefore, stable inhibitors other than peptide-based small organic molecules are under investigation.

7.1.4 Vitamins. Vitamins are essential organic molecules present in the human body that are important for proper body functioning. Their role in inhibiting protein aggregation has been reported by various groups. Ono *et al.* have shown that vitamin A can potentially inhibit the aggregation of α Syn fibrils responsible for Lewy body diseases.³⁶² Vitamin E has been shown to prevent the aggregation of A β causing Alzheimer's disease.³⁶³ Additionally, other vitamins such as C, B12, and K3 are used as protein inhibitors.³⁸³ Oxidative stress (OS) in proteins is a major cause of their aggregation,³⁶⁴ and these aggregates bind with metal ions and hydrogen peroxide leading to the formation of reactive oxygen species (ROS).³⁶⁵ Vitamins A, C, and E reduce ROS by their free electron scavenging action, inhibiting protein aggregation.³⁶⁶

7.1.5 Non-detergent sulfobetaine. Another class of additives used to inhibit aggregation are non-detergent sulfobetaines (NDSBs). Although not widely used, these can prove to be useful. NDSBs show a dramatic increase in the native protein yield in hen lysozyme, and the renaturation of *E. coli* β -D-galactosidase.³⁶⁷ NDSBs inhibit protein aggregation³⁶⁸ as they act as pharmacological chaperones by preventing the aggregation of folding intermediates and binding and stabilizing the folded state.³⁶⁹ Nicole *et al.* investigated the effect of NDSB-1 on the renaturation of the β 2-subunit of *E. coli* tryptophan synthase, bovine serum albumin, and murine mAb, and additionally performed a comparative study on the efficiency of 5 NDSBs in renaturing denatured lysozyme and bacterial galactosidase.³⁷⁰ The results showed that NDSB-1 efficiently inhibited these two proteins. Among choline esters, the osmolyte choline-*O*-sulphate (2-(trimethylammonio)ethyl sulphate) shows inhibitory effects on amyloid formation.³⁷¹ Such information may enable researchers to target specific species or phases of protein aggregation by using small molecules or a combination of molecules. However, one strategy may not apply to all amyloid diseases, as even a small change in protein concentration can have a profound effect on disease. A detailed understanding of the impact of small molecules on aggregate formation and their structure–function relationship is needed to develop efficient biopharmaceuticals in the future.

7.2 Polymeric inhibitors

The use of polymeric compounds in protein aggregation inhibition has generated interest only in the last decade, despite their tremendous potential. The molecular weight of polymeric inhibitors can be easily manipulated according to requirements, and the compounds can have various useful properties like flexible conformations (which may affect its interactions with biological molecules), higher viscosity, surface charge, and the incorporation of additional functionalities. In the next



Table 4 Polymeric additives used to suppress protein aggregation

Type of polymer	Probable mode of action	Key results	Ref.
PEG based	Strongly interacts with unfolded proteins due to dehydration of PEG	Nearly 80% enzymatic activity of lysozyme retained at 30 mM triangular PEG	320 and 395
Pullulan-based nanogels	Act as molecular chaperones	Nearly 20% ThT fluorescence at glucose unit/A β ratio of 250	396–398
Late embryogenesis abundant (LEA) proteins	Act as molecular shield	Nearly 70% activity of LDH during desiccation at PvLEA-22/LDH molar ratio	399–402
Zwitterionic polymers	Act as molecular shield	0.42% ThT fluorescence of insulin after 12 incubation with 1.5% poly-SPB and 30% BuMA	322, 403 and 404
Glycopolymers	Combines action of sugars (vitrification, water replacement, and water entrapment) and surfactant (molecular chaperones)	Almost 100% activity of β -Gal at 10 wt% equiv. of trehalose glycopolymers	405 and 406
Conjugated polymers	Strong hydrophobic interaction between polymer and proteins	Reduction in preformed amyloid plaques in brain slice culture (~60%)	407 and 408

section, we describe polymer-based inhibitors of protein aggregation and have been summarized in Table 4.

7.2.1 Polyethylene glycol (PEG) derivatives. PEG compounds have been used in various biomaterial and biomedical fields for increasing biocompatibility, changing circulation time, increasing solubility, and shielding against deactivation.^{384–386} PEG in its native form is used for a number of applications such as drug delivery,^{387,388} as a laxative,^{389,390} and in wound healing.³⁹¹ In protein research, PEG has been used to conjugate proteins, known as PEGylation, to protect them from degradation, increase their circulation time, and minimize the immune response. This method is extensively used in the field of protein-based therapeutics for the treatment of a number of diseases.^{392–394} Together, these reports clearly indicate the potential of PEG to stabilize or protect proteins from denaturation or aggregation.

In an important study by Kinbara and co-workers, the group synthesized monodispersed triangular PEG which suppressed the thermal aggregation of HEWL (Fig. 7).³²⁰ The polymer was synthesized using pentaerythritol and substituted oligoethylene glycol as the junction units using a multi-step reaction scheme. The addition of the resultant polymer (30 mM) helped in the retention of ~75% enzymatic activity. Owing to the higher dimensional structure, triangular PEG undergoes dehydration and switches conformational state from gauche to anti-form on increasing the temperature, suggesting that dynamic changes take place in the molecule on heating. This results in increased hydrophobicity of PEG, as seen by the occurrence of dehydration at a lower temperature compared to linear PEG. The authors hypothesized that triangular PEG interacts strongly with thermally unfolded proteins, thus protecting them from aggregation-inducing collisions.

In another study, Kameta *et al.* developed the functionalization of nanochannels of soft nanotubes with PEG.³⁹⁵ The resulting systems showed remarkable suppression of thermal aggregation of HEWL. Further, the denatured proteins could also be refolded by this system. Kameta *et al.* demonstrated that the activity results due to the hydrophobic interactions between the short PEG chains that have been dehydrated after heating at elevated temperature and the surface-exposed hydrophobic amino acid domains of HEWL. In the same year, Breydo and his team developed a hyper-branched PEG-based polymer which contained dopamine.⁴⁰⁹ The polymer

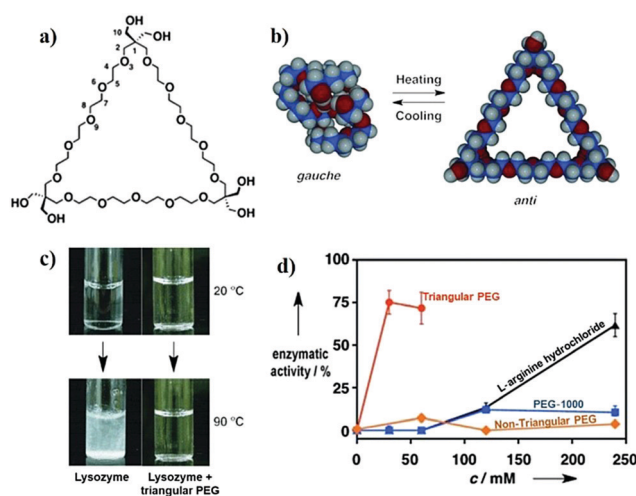
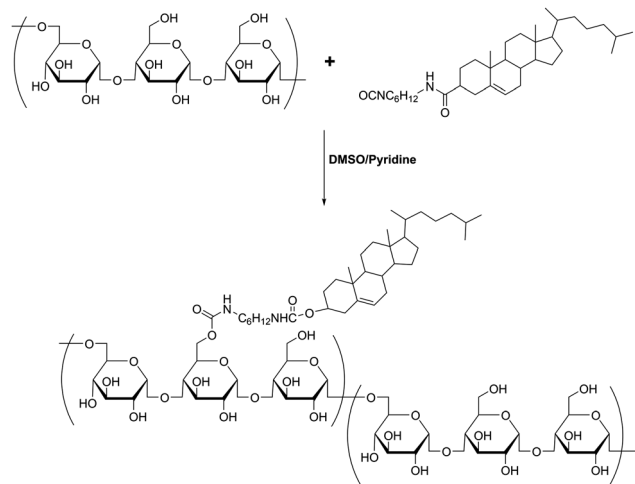


Fig. 7 Protein aggregation inhibition by structured monodisperse PEG. (a) Molecular structures of triangular PEG; (b) schematic illustration of the heat-triggered conformational change from gauche to anti-form; (c) photographs of lysozyme and lysozyme + triangular PEG at 20 °C (upper panel), and after heating at 90 °C for 30 min (lower panel). Photographs clearly show aggregation of protein when heated in the absence of polymer, and the presence of polymer suppresses aggregation; (d) residual enzymatic activity of lysozyme heated in the presence of different additives, demonstrating that the topology of PEG significantly affects their properties. Reproduced with permission from ref. 320, copyright (2013), Wiley.

synthesis was carried out using a one-pot RAFT polymerization of dopamine methacrylamide, PEG diacrylate, and PEG methyl ether acrylate. The resulting polymer suppressed fibril formation in α Syn, and the activity was attributed to the presence of dopamine which promotes the formation of oligomeric aggregates. These aggregates are resistant to further conversion into mature fibrils as they can form covalent adducts with α Syn, thus stabilizing the oligomeric form. Although the activity of the hyper-branched polymer was less than that of dopamine alone, the authors hypothesized that the ability to change polymer structure and composition may assist future studies examining the interaction between the polymer and proteins.

These studies show the immense potential of PEG-based polymers in suppressing the aggregation of proteins. Owing to their biocompatible nature, PEG-based polymers, particularly high molecular weight PEG, and PEG functionalized with





Scheme 1 Synthetic route to prepare cholesterol pullulan (CHP).

known inhibitors may show remarkable properties and have potential use in clinical applications.

7.2.2 Pullulan-based nanogels. Akiyoshi *et al.* have published a series of reports using pullulan-based nanogels as artificial chaperones for the protection of proteins. In one of their earlier studies, they reported the synthesis of hydrophobic pullulan, which could self-assemble in water to form nanogels.⁴¹⁰ For this, 1,6-diisocyanatohexane modified cholesterol was synthesized and made to react with pullulan to obtain cholesterol modified pullulan (CHP), which is capable of self-assembling in water to form a nanogel (Scheme 1).

In subsequent studies, the authors demonstrated that these nanogels can encapsulate protein molecules.^{411,412} Studies with CHP nanogels revealed that they can function as artificial molecular chaperones and prevent the aggregation of denatured proteins (Fig. 8a).^{398,413,414} In one study, Ikeda *et al.* showed that CHP can inhibit the formation of amyloid-like fibrils of A β -(1–42).³⁹⁶ The authors synthesized a positively charged CHP nanogel (CHPNH₂) and compared its efficiency with neutral CHP nanogels. The results showed that the positively charged nanogel yielded greater activity compared to CHP, indicating that electrostatic interactions affect the activity to a great extent. Further, the proteins can be released from the nanogels by the addition of a cyclodextrin derivative (methyl-*b*-cyclodextrin; M β CD), which can bind to the cholesterol part of CHP, inducing the disassociation of CHP nanogels (Fig. 8b). The recovered proteins were examined and showed that fibril formation was completely suppressed due to the interaction of A β with the nanogels. In another study, Sawada *et al.* reported that CHP nanogels can act as artificial chaperones for horseradish peroxidase (HRP) and protects it against thermal denaturation.³⁹⁷ They also showed that CHP can assist in the refolding of denatured HRP, indicating that CHPs may be useful for both the protection and post-denaturation stages. Nochi *et al.* demonstrated that CHPNH₂ can be used as a delivery vehicle for intranasal vaccine-delivery.⁴¹⁵ To show its effectiveness, the authors administered a prototype vaccine antigen (subunit fragment of *Clostridium botulinum* type-A neurotoxin BoHc/A) incorporated into CHP. The neurotoxin was

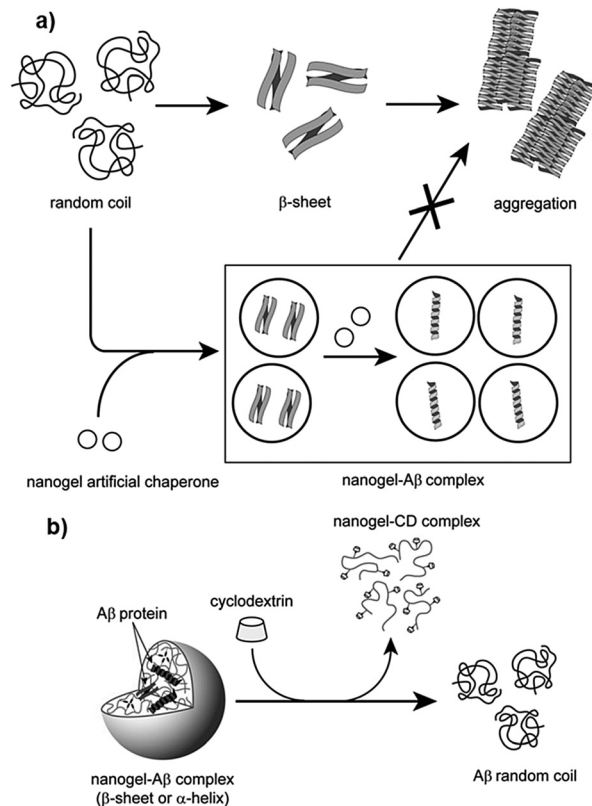


Fig. 8 Schematic illustration of the interaction between CHP and proteins; (a) probable mechanism of protection of proteins by CHP nanogels via molecular chaperone function, and (b) releasing of proteins from CHP nanogels by M β CD. Reproduced with permission from ref. 396, copyright (2006), Elsevier.

successfully absorbed by the mucosal dendritic cells after it was released from CHP nanogels and also induced the required antibody response. Thus, the study by Nochi *et al.* highlights the potential for the development of protein delivery vehicles using polymeric materials.

7.2.3 Late embryogenesis abundant (LEA) proteins. LEA proteins are intrinsically disordered, hydrophilic, low molecular weight (10–30 kDa) proteins that reportedly protect plants from desiccation induced stress.^{416,417} LEA proteins are associated with cellular dehydration tolerance (for further details, see review by Hincha and Thalhammer⁴⁰⁰), and are generally classified into different groups based on their amino acid sequence and gene expression pattern.⁴¹⁷

Multiple studies have demonstrated the ability of LEA proteins to protect biological entities such as proteins and membranes in desiccating environments.^{400,418–422} In one such study, Goyal *et al.* reported that recombinant forms of AavLEA1, a group 3 LEA protein, can protect against desiccation induced aggregation of citrate synthase (CS), and helps retain its activity.⁴⁰¹ They hypothesized that owing to an unordered and flexible structure, LEA proteins can act as a molecular shield, thus forming a physical barrier to suppress any contact between CS molecules. Interestingly, they demonstrated that in the presence of trehalose, LEA proteins can protect CS against heat-induced



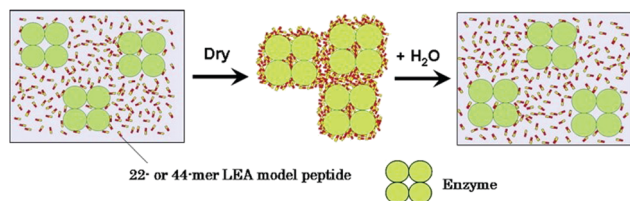


Fig. 9 Schematic illustration of the chaperone-like activity of LEA proteins. Reproduced with permission from ref. 402, copyright (2016), Elsevier.

aggregation (Fig. 9). Although LEA proteins alone do not possess such properties, a synergistic effect occurs in the presence of trehalose, causing LEA proteins to affect the unfolding pathway. In a similar study, Furuki and Sakurai showed that the group 3 LEA protein model peptide PvLEA-22 enables the retention of $\sim 70\%$ activity of lactate dehydrogenase during desiccation.³⁹⁹

The studies described above illustrate that LEA proteins decrease molecular collisions by acting as a molecular shield, but do not completely arrest the collisions, indicating that proteins will aggregate eventually, albeit at a slower rate. To corroborate this, Liu *et al.* studied the kinetics of polyglutamine (polyQ)-dependent protein aggregation (polyQ sequences Q23 or Q37) in the presence of LEA proteins. Their results showed that the anti-aggregation activity of LEA proteins in cells is time dependent. Further, by using the time-dependent Thioflavin T (ThT) analysis, Liu *et al.* observed that polyQ37 showed an increase in ThT intensity in 1 h, indicating the formation of polyQ37 aggregates, followed by a gradual increase in intensity till 5 hours, after which a plateau was reached (Fig. 10). In contrast, no increase was observed in the case of polyQ23. The incubation of polyQ37 with LEA proteins resulted in a significant reduction in polyQ aggregation in the initial phase, which later increased with a longer incubation time. These results suggested that LEA proteins reduce the rate of aggregation alone, and act as kinetic stabilizers of aggregating proteins.

A study by Takao *et al.* showed that PvLEA-22 suppresses the heat-induced aggregation of lysozyme.⁴¹⁷ Importantly, the peptide could facilitate the refolding of lysozyme on cooling, and $\sim 80\%$ native catalytic activity was restored. Based on simulation studies, Takao *et al.* established that these peptide molecules act as a physical barrier and shield the collision of denatured lysozyme molecules, thus preventing aggregation. This is in good agreement

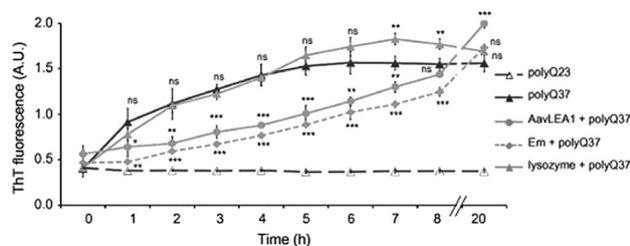


Fig. 10 Time dependent ThT assay of polyQ37 aggregation in the presence of various proteins. polyQ23 and polyQ37 indicate different polyQ sequences. Em and AavLEA1 indicates group 1 and group 3 LEA proteins respectively. Lysozyme was used as a negative control. Reproduced with permission from ref. 416, copyright (2011), Elsevier.

with the previous studies which suggested molecular chaperone-like functions for LEA proteins.^{401,423,424} Interestingly, they suggested that a rapid exchange takes place between the peptide molecules attached to denatured proteins and they remain in contact with the protein for a short period of ~ 200 ns, enabling the retention of protein properties and promoting refolding on the removal of heat-induced stress.

Since LEA proteins contain charged groups, they can be used as polyelectrolytes or charged macromolecules in mechanistic studies. Their ability to protect proteins under severe stress suggests that they can act as potential models to help develop synthetic poly-ampholytes or polyelectrolytes in the future for protein stabilization.

7.2.4 Polyelectrolytes. Polymers containing charged groups are known as polyelectrolytes. They can be broadly divided into three categories: polymers containing either positive or negative charge, polyampholytes, and zwitterionic polymers. Polyampholytes and zwitterionic polymers contain both positive as well as negative charges. Polyampholytes can be either positive, negative, or neutral (charge-balanced) molecules. Zwitterionic polymers are polyelectrolytes with positive and negative charges on the same monomer unit, *i.e.*, they have the same number of opposite charges. Although all zwitterionic polymers are also polyampholytes, for the sake of simplicity, we will refer to polyampholytes as polymers containing the opposite charges on different repeating units. Polyampholytes and zwitterionic polymers have been widely used in several biomedical applications.^{425–427}

Zwitterionic polymers are excellent anti-biofouling agents, as they can maintain the water structure at the polymer-material interface.^{428,429} They have also been conjugated with proteins to improve the stability of proteins.⁴³⁰ In 2015, our group reported that poly-sulfobetaine (poly-SPB), synthesized *via* reversible addition-fragmentation chain transfer (RAFT) polymerization (Fig. 11a), shows a remarkably high efficiency in suppressing the thermal aggregation of HEWL (Fig. 12a).⁴⁰³ Additionally, the zwitterionic polymer could protect the higher-order structure of lysozyme from changing its conformation, and $\sim 85\%$ activity was retained even after heating at elevated temperatures in the presence of poly-SPB (15% w/v). We hypothesized that owing to the anti-biofouling property of poly-SPB, zwitterionic polymers behave as molecular shields and suppress aggregation-inducing collisions between the hydrophobic domains of misfolded proteins, thus protecting proteins against aggregation. Increasing the molecular weight resulted in increased efficiency of aggregation inhibition, which could be attributed to the greater anti-biofouling ability compared to polymers with lower molecular weight.⁴³¹

Although the results were satisfactory, a high polymer concentration was required to obtain high protein protection. To further improve the efficiency of these copolymers, we transformed the linear polymer to a core-shell nanogel. The nanogels were prepared by utilizing the end group of the RAFT agent and using poly-SPB as a macro-RAFT Agent (macro-CTA). Next, a radical cross-linker and SPB monomers were polymerized in the presence of macro-CTA to yield a core-shell nanogel (Fig. 11b). These nanogels were synthesized with different degrees of hydrophobicity in the core, and had different shell sizes (NG-A to NG-F, where the molecular weight of the polymer



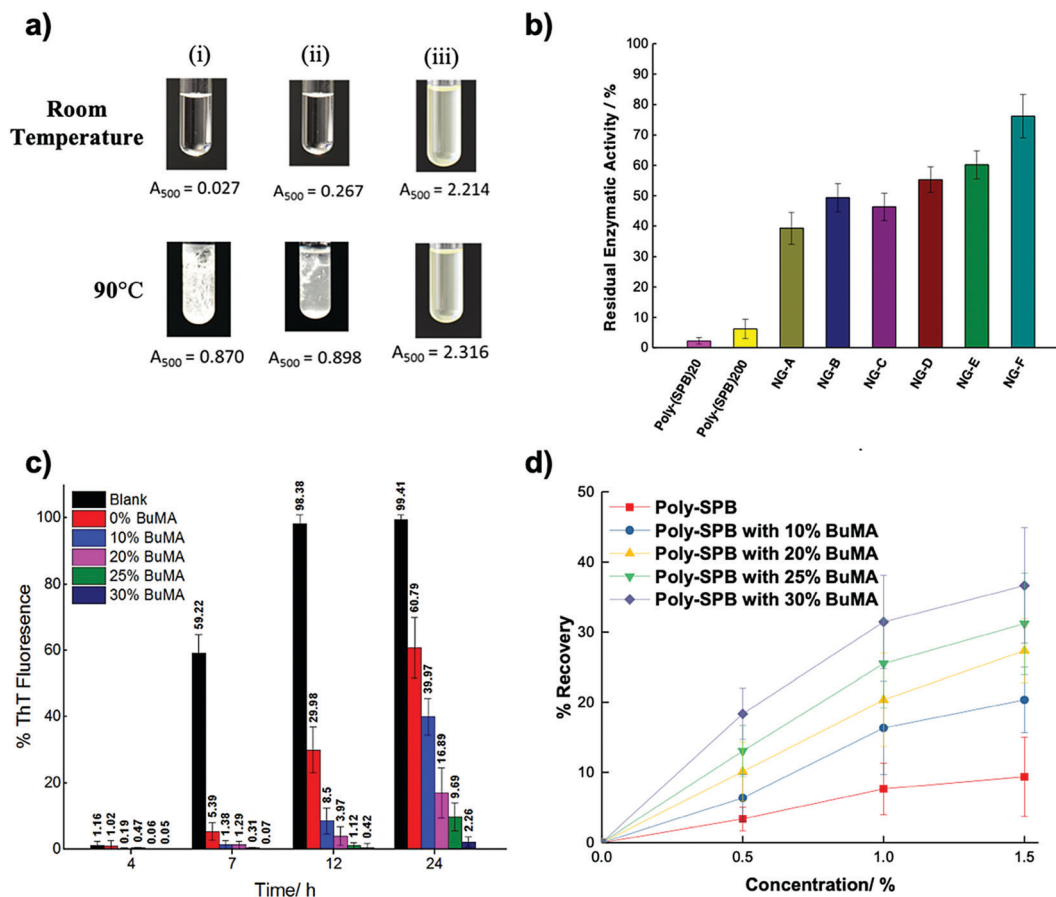


Fig. 12 Protein aggregation inhibition by zwitterionic polymers. (a) Photographs of lysozyme (i) without any additive at room temperature (top) and after heating at 90 °C for 30 min, (ii) with poly-SPB. Numbers below indicate absorbance at 500 nm; (b) residual enzymatic activity of lysozyme after heating at 90 °C for 30 min in presence of various additives. NG-A to F indicates various nanogels with degree of hydrophobicity and shell size; (c) ThT assay of insulin with poly-SPB derivatives; and (d) recovery yield of insulin calculated from ThT assays for analysing refolding efficiency. (a) Was reproduced from ref. 403 with permission from The Royal Society of Chemistry, (b) was reproduced from ref. 404 under Creative Commons CC BY; (c) and (d) were reproduced with permission from ref. 322, Copyright (2018), Wiley.

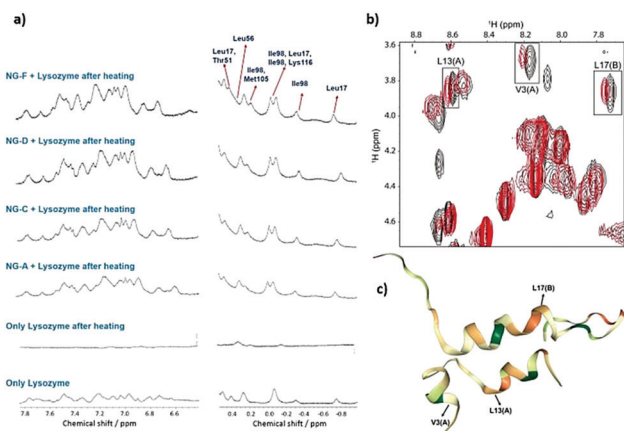


Fig. 13 Mechanistic investigation of protein aggregation inhibition by zwitterionic polymers by NMR. (a) ^1H -NMR investigation of lysozyme with and without additives. NG-A to F indicates various nanogels with degree of hydrophobicity and shell size; (b) ^1H - ^1H TOCSY for native insulin (black) and insulin and hydrophobic derivative of poly-SPB; (c) MD ensemble of insulin by hydrophobicity. (a) Was reproduced from ref. 404 under Creative Commons CC BY; (b) and (c) were reproduced with permission from ref. 322, Copyright (2018), Wiley.

of amyloid-like fibrils was prevented, and less than 3% fibrillation was observed after a 24 h incubation (Fig. 12c). CD spectroscopy revealed that secondary structural elements of insulin were retained by the addition of zwitterionic polymers. To investigate the underlying mechanism, ^1H - ^1H TOCSY spectra were recorded using WATER suppression by GrAdient Tailored Excitation (WATERGATE), to suppress the resonance signals from the solvent. The spectra revealed that these hydrophobic poly-SPB polymers interact with the hydrophobic domains of insulin (Valine-3 and Leucine-13), possibly preventing intermolecular interactions between these domains of structural subunits that may lead to the formation of aggregates (Fig. 13b and c). These polymers were also found to facilitate the refolding of insulin by $\sim 40\%$ (Fig. 12d). This opens new avenues for the development of efficient protein protection and refolding agents, which may be used to prevent and cure numerous neurodegenerative disorders.

Further, we developed a graft polymer where poly-SPB was grafted onto the backbone of carboxylated ϵ -poly-L-lysine (PLL-SA).⁴³² This was done in a multi-step reaction scheme where PLL-SA was first synthesized by adding succinic anhydride to ϵ -PLL, followed by the controlled substitution of a RAFT agent



on PLLSA by acid–amine coupling to obtain the ϵ -PLLSA-macro RAFT agent. Finally, this macro RAFT agent was used to polymerize the sulfobetaine monomer to obtain the graft polymer (Fig. 11d). ϵ -PLLSA is a well-known cryoprotectant and was selected due to its membrane-stabilizing property.⁴³³ The graft polymer showed a greater propensity to protect lysozyme against thermal aggregation compared to the homopolymer, and it could efficiently bind to proteins electrostatically and release it on a change in the pH; *i.e.*, it was capable of exhibiting pH responsive protein delivery. Thus, these systems may have potential to be used for the safe delivery of therapeutic proteins and protect these proteins against denaturation.

In a study by Zhang *et al.*, a zwitterionic gel was developed which encapsulated proteins and provided them stability.⁴³⁴ Proteins were encapsulated in a hydrogel nanoparticle by first introducing an acryloyl group on their surface, followed by an *in situ* free radical polymerization reaction using carboxybetaine monomer and a carboxybetaine cross linker. A highly immunogenic fungal-derived uricase was used for studying the encapsulation efficiency, and the results showed that encapsulated proteins had better thermal stability and showed greater enzymatic activity after being subjected to heat treatment. Moreover, its efficiency was compared with PEGylated uricase and it was found that the zwitterionic polymer encapsulated enzyme had better stability and showed a superior pharmacokinetic profile.

Certain polymers like polyvinyl alcohol (PVA) and polyampholytes exhibit ice re-crystallization inhibition (IRI activity) (Fig. 14a) and are effective in cryopreservation of cells.^{427,435,436}

Towards this end, Mitchell *et al.* showed that polymers exhibiting IRI can also protect proteins against freeze-induced stress.⁴³⁷ They analysed different IRI active and inactive polymers (PEG, hydroxyethyl starch (HES), and polyvinylpyrrolidone (PVP)) for their ability to protect proteins against stress (Fig. 14b). Trehalose was used as a control, owing to its well-known efficiency in protecting proteins,⁴³⁸ whereas PEG was also selected due to its cryoprotective property. The results showed that polymers alone did not exhibit any protecting activity; however, the mixture of PEG and PVA yielded higher protein recovery, similar to that to trehalose (Fig. 14c). Similarly, polyampholytes mixed with PEG also yielded very high protein recovery (Fig. 12d). These results suggest that the high efficiency of these polymers to stabilize proteins during freezing is linked to their high IRI activity, which in turn is due to the inhibition of irreversible aggregation.

In another study, Sofronova *et al.* showed that polyelectrolytes bearing the same charge as the protein (at a particular pH) suppress protein aggregation to the greatest extent.⁴³⁹ They studied a polycation and a polyanion along with different proteins at different pH values (higher and lower than the isoelectric point of the proteins). The results showed that suppression of aggregation was most effective when the charge of the polymer was the same as the surface charge of the protein. When the charge of the polymer was opposite to that of the protein, it resulted in the formation of large protein aggregates. Through molecular dynamic simulation studies, the authors postulated that protein protection is maximal when the electrostatic binding was the least (*i.e.*, only a small part of the

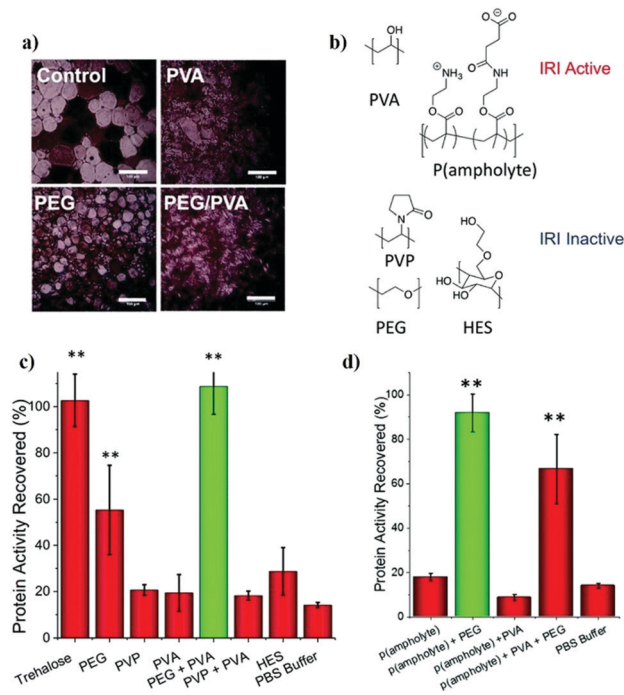


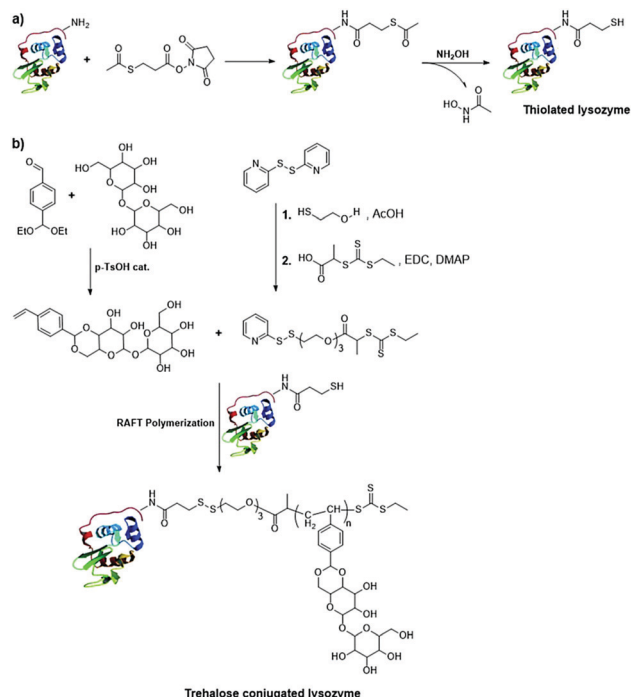
Fig. 14 Protein aggregation inhibition with IRI polymers. (a) IRI activity of different polymers (scale bar 100 μ m), (b) chemical structures of various polymers, (c) and (d) residual activity (recovery) of β -galactosidase after freezing at -20 $^{\circ}$ C for 3 days in the presence of various polymers. Reproduced with permission from ref. 437 under Creative Commons Attribution 3.0 Unported Licence.

polymer chain interacts with the protein surface). The remaining part of the polyelectrolyte forms charged loops and tails around the protein surface, and the loop size determines the aggregation inhibition propensity. Sofronova *et al.* hypothesized that this loop provides solubility to the complex. However, concerns regarding the toxicity of the polycations remain, which may create hurdles for *in vitro* or *in vivo* studies. Further, it remains to be seen whether the hypothesis can be applied to all kinds of polyelectrolytes.

7.2.5 Glycopolymers. The Maynard group used trehalose-based glycopolymers for the stabilization of polymer–protein conjugates during environmental stress.^{405,406} In one study, they conjugated trehalose glycopolymers to thiolated lysozyme.⁴⁰⁵ For the preparation of the glycopolymers–protein conjugate, they first thiolated lysozyme by treating with *N*-succinimidyl-*S*-acetylthio propionate, followed by deprotection. Next, trehalose was linked with a styrene monomer *via* a 4,6-acetal linkage. RAFT polymerization of the styrene linked trehalose was carried out in the presence of thiolated lysozyme using a disulphide chain transfer agent to obtain the trehalose conjugated lysozyme (Scheme 2). The conjugated protein was then subjected to lyophilization and heat treatment to examine the efficiency of conjugation. The conjugate had high activity even after 10 lyophilization cycles and showed $\sim 100\%$ retention of activity. Similarly, during heat treatment at 90 $^{\circ}$ C for 1 h, a range of 60–80% activity was retained.

In another study, the authors used trehalose glycopolymers as excipients for stabilizing proteins.⁴⁰⁶ Here, trehalose was modified with reagents such as styrenyl acetal (P1), methacrylate





Scheme 2 Schematic representation of the conjugation of trehalose with lysozyme. (a) Preparation of thiolated lysozyme by treatment with SATP, and (b) RAFT polymerization to produce trehalose-conjugated lysozyme.

acetal (P2), styrenyl ether (P3), and methacrylate (P4), and further subjected to free-radical polymerization. To analyse the activity, horseradish peroxidase (HRP) and β -galactosidase (β -Gal) were used, and the enzymes were subjected to heating and multiple lyophilization cycles, respectively. The protein activity in the presence of additive was found to be much higher in both cases, relative to no additive controls. These polymers were found to be non-toxic when used with several cell lines, indicating their potential as additives to proteins to protect them from denaturation under various stresses.

A study by Debnath *et al.* demonstrated that poly-trehalose nanoparticles suppress amyloid aggregation.⁴⁴⁰ The nanoparticles used consisted of an iron oxide core and a zwitterionic shell, which was introduced by adding amino and acrylate monomers, which were then polymerized to form polymer-coated nanoparticles. Trehalose was introduced next by conjugating the amine groups with trehalose monocarboxylic acid *via* EDC coupling to yield poly(trehalose) nanoparticles (Fig. 15a). They tested the efficiency of these nanoparticles in inhibiting A β fibrillation, and their results showed that these nanoparticles were 1000–10 000 times more effective in suppressing fibrillation compared to trehalose (Fig. 15b–d). The efficacy of the nanoparticles was also tested on a transgenic mouse with Huntington's disease. Treatment with the poly(trehalose) nanoparticles reduced the number of mutant huntingtin aggregates in different regions of the brain. Further, there was no lethal effect of these nanoparticles on mice. The authors studied the iron content in the brain after administration of the nanoparticles and found a 3.5 \times increase in the iron content, indicating that these nanoparticles can cross the blood–brain

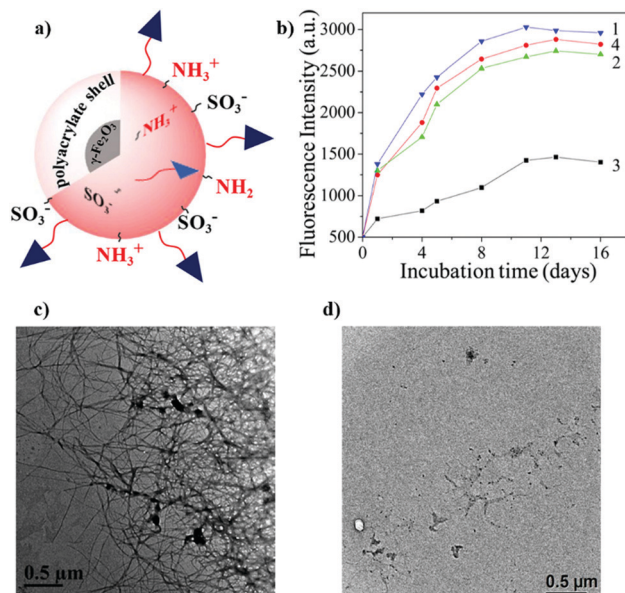


Fig. 15 Inhibition of protein aggregation. (a) Schematic representation of poly(trehalose) nanoparticles, (b) ThT assay for inhibition of A β aggregation in the presence and absence of various reagents; 1, 2, 3 and 4 indicate the absence of additives, the presence of nanoparticles with 5 μ m trehalose, 5 μ m molecular trehalose, and 5 mmol molecular trehalose, respectively; (c) and (d) show the TEM image of the A β fibrils in the absence and presence of nanoparticles, respectively. Reproduced with permission from ref. 440 copyright (2017), American Chemical Society.

barrier. These findings indicate that zwitterionic nanoparticles may be effective in overcoming amyloid-derived neurodegenerative diseases.

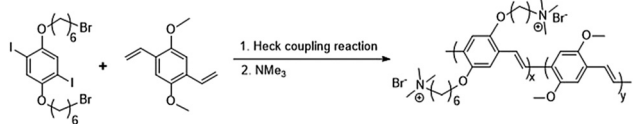
In a study by Mantovani *et al.*, linear and star-shaped (four-arm) glycopolymers with different saccharides like galactose, trehalose, mannose, arabinose, and trehalose,⁴⁴¹ were used as excipients. The results showed that these glycopolymers could modulate the colloidal and conformational stability of a model mAb.

7.2.6 Conjugated polymers. Conjugated compounds consist of connected p orbitals with delocalized electrons in a molecule. Conjugated polymers (CP) are used as conductive polymers in solar cells, electronic devices, and optoelectronics.⁴⁴² Due to their inherent non-polar nature, CPs have not been popular for biomedical applications. Numerous strategies have been developed to make them water-soluble for use in various biomaterial applications, *i.e.*, the synthesis of conjugated polyelectrolytes, water-dispersible CP nanoparticles, and neutral water-soluble CPs.⁴⁴³ Owing to these advancements, CPs have been employed for multiple bio-based applications such as photoacoustic imaging,⁴⁴⁴ sensing and imaging,⁴⁴⁵ and gene delivery.⁴⁴⁵

Chai *et al.* prepared water-soluble conjugated polymers to detect and inhibit the UV-light induced aggregation of lysozyme.⁴⁰⁸ The polymer (PPV-NMe₃⁺) was synthesized using a divinylbenzene derivative and a diiodobenzene derivative using a Heck coupling reaction, followed by quaternization with trimethylamine (Scheme 3).

The authors reported that upon UV illumination, HEWL initially forms granular aggregates, followed by self-assembly into globule-like aggregates. However, when PPV-NMe₃⁺ is





Scheme 3 Synthesis of PPV-NMe³⁺ from conjugated diiodo and divinyl compounds via a Heck coupling reaction.

added to HEWL prior to UV illumination, the polymer attaches to the surface of the aggregates formed and disrupts the π - π stacking of PPV-NMe³⁺, resulting in increased fluorescence intensity. As the size of the aggregates grows, the hydrophobic interaction between the polymer and HEWL increases, resulting in the enhancement of fluorescence intensity which can be visualized by a change in colour. They argued that the technique can be used to probe the aggregation of proteins. Additionally, owing to the strong hydrophobic interaction between HEWL and the protein, the aggregation of HEWL is suppressed by the polymer (Fig. 16).

In another study, Sun *et al.* developed similar amphiphilic conjugated polymers for suppressing amyloid formation.⁴⁰⁷ They functionalized the polymer using *p*-nitrophenyl esters (PPV-NP), which allows the attachment of the polymer to lysine residues of the protein. The authors reported that PPV-NP selectively reacts with amyloid species over other proteins due to the synergistic effects of hydrophobic and covalent reactions. They suggested that PPV-NP inhibits A β 42 aggregation because of the covalent linkage between the polymer and protein, which

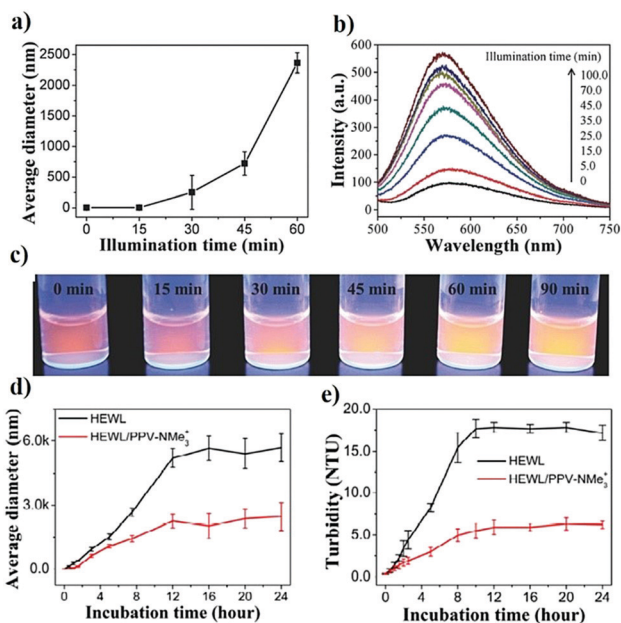


Fig. 16 Detection and inhibition of protein aggregation by the addition of PPV-NMe³⁺. Detection of aggregation after UV illumination by (a) DLS analysis of HEWL alone, (b) fluorescence spectra of PPV-NMe³⁺ in the presence of lysozyme samples, (c) fluorescence imaging of PPV-NMe³⁺ in the presence of UV illuminated lysozyme samples. The suppression of aggregation by the addition of PPV-NMe³⁺ to HEWL prior to UV illumination was studied by (d) DLS, and (e) turbidity analysis. Reproduced with permission from ref. 408 copyright (2016), Wiley.

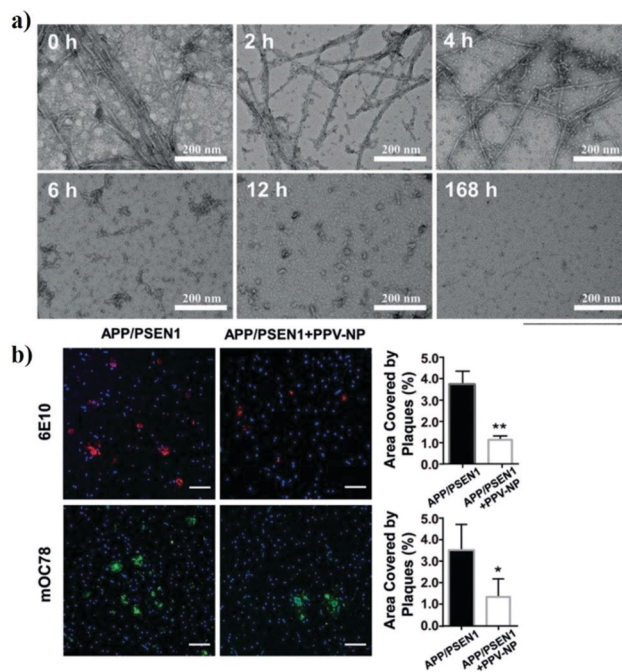


Fig. 17 Elimination of existing amyloid plaques. (a) TEM analysis of preformed A β 42 fibrils mixed with PPV-NP for different times, and (b) representative images of 6E10 (red) and mOC78 (green) immunoreactive A β plaques and their quantification in the cortical fields of transgenic mice after treating with and without PPV-NP for 10 h by *ex vivo* cultures. Reproduced with permission from ref. 407 copyright (2019), Wiley.

blocks the hydrophobic cores of A β 42 and prevents secondary structure conversion and polymerization of A β 42. PPV-NP suppresses the formation of aggregates and also eliminates the existing amyloid plaques (Fig. 17a). They checked its efficiency using brain slices from transgenic mice and found that brain vibrosections treated with the polymer showed fewer A β plaques and decreased the plaque area (Fig. 17b). This result highlighted the potential of conjugated polymers to suppress aggregation and allow the removal of already aggregated species.

In another study, the same group developed similarly conjugated polymers functionalized with an *N*-hydroxysuccinimide ester and a pentafluorophenol ester.⁴⁴⁶ These polymers suppressed the aggregation of islet amyloid polypeptide (IAPP). Further, these polymers also could irreversibly remove preformed IAPP fibrils, *via* the mechanism proposed in their previous study.

These studies clearly show the potential of conjugated polymers in inhibiting protein aggregation and enabling the refolding of proteins. Additional studies need to be conducted with the conjugated polymers, using different functional groups or by attaching other known inhibitors to obtain a synergistic effect. However, a drawback these systems is their inherent non-biodegradability. Studies to effect degradation should also be carried out, which will enable the use of these systems for clinical applications.

8. Refolding

Protein refolding is a process by which proteins can attain their native structure, and it is established by preventing the



stabilization of misfolded proteins or by destabilizing monomeric intermediates and β -sheet oligomers. Protein refolding is as important as suppressing protein misfolding, and is a vital step in the production of recombinant proteins.⁴⁴⁷ Refolding of misfolded/unfolded/solubilized proteins into their native conformation is a pre-requisite to procure a biologically active form.

Another key application of refolding proteins is for the cure of neurodegenerative diseases. Certain neurodegenerative diseases such as Alzheimer's are associated with the formation of amyloid plaques,⁴⁴⁸ that are formed by the aggregation of proteins. It is believed that the deposition of amyloid plaques damages the nerve cells by a mechanism that is not well understood. However, the removal/solubilization of amyloid plaques can aid in the cure of multiple neurodegenerative diseases.

In protein misfolding disorders (PMDs), the secondary and tertiary structure of a typical protein is altered without changes in its primary structure. The conformational change may promote the occurrence of diseases due to the toxic activity of the protein or the abrogation of biological functions of the natively folded proteins.^{449,450} In most PMDs, the misfolded protein consists of β -sheet conformation.^{449,451} In α -helices, the hydrogen bonds are present between groups that are within the same strand, while in β -sheets, the bonds occur between two different strands. Since the second β -strand belongs to different regions of the same protein or a different molecule, the formation of these β -sheets is generally stabilized *via* protein oligomerization or aggregation. In most of PMDs, the misfolded protein undergoes self-association and is deposited as amyloid-like aggregates in different organs, leading to tissue damage and organ dysfunction.⁴⁵²

Thus, materials that can stabilize the native structure of a protein by suppressing the aggregation of proteins and facilitating the refolding process of denatured proteins are of great interest. Therapies directed towards diseases caused by misfolded proteins should aim to reverse or inhibit the conformational changes in the structure of proteins. Therefore, compounds or methods that assist protein folding systems, the destruction of misfolded aggregates, or those which prevent the misfolding of proteins may prove to be efficient in treating such diseases.

8.1 Refolding kinetics

Proteins undergo different unstable conformations before reaching their final native structure. In the absence of chaotropic operators, these intermediate conformations may show intermolecular communication, leading to the accumulation and precipitation of proteins and difficulties in refolding them. In refolding models that approximate the final yield from the renaturation procedure, these side reactions are high order reactions, while the folding reaction is estimated by a first-order reaction.⁴⁵³

A refolding reaction can be expressed as follows:

$$\frac{dU}{dt} = -(k_1 U + k_2 NU^n)$$

where k_1 is the folding rate constant, k_2 is the aggregation rate constant, U indicates the concentration of the unfolded protein, t indicates time, N is the aggregation number, and n is the

order of the reaction for aggregation, assuming that the back reaction from folded to unfolded protein is trivial, and the fast formation of the folding intermediate occurs. The critical solutions of the differential equation exist for second⁴⁵⁴ and third⁴⁵⁵ order aggregation reactions:

$$Y(t) = \frac{k_1}{U_0 K_2} \ln \left[1 + \frac{U_0 K_2}{k_1} (1 - e^{-k_1 t}) \right]$$

where $Y(t)$ is the yield of the refolding reaction, U_0 is the initial concentration of the denatured protein, and K_2 is the rate constant of aggregation $k_2 N$.

$$Y(t) = \Psi \{ \tan^{-1} [(1 + \Psi^2) e^{2k_2 t} - 1]^{1/2} - \tan^{-1} \Psi \}$$

Refolding techniques target the inhibition of these side reactions to enhance the final yield of the folded protein. The physical and chemical environment plays a crucial role during refolding, as it affects the folding and aggregation process. The kinetic constants of the refolding process are important for the design of parameters such as the dilution rate, final protein concentration, and time for the refolding of the proteins of interest.

8.2 Determination of refolding conditions

For the isolation of recombinant proteins, enzymes are used to lyse cells, leading to the degradation of cell walls. Inclusion bodies are isolated through mechanical disruption of cells, followed by centrifugation, suspension of the cell debris and protein products *via* high-pressure homogenization, and sedimentation of inclusion bodies.⁴⁵⁶ A conical plate centrifuge is used for the centrifugal process to perform separation of inclusion bodies based on their spectrophotometric properties. In 1997, Wong *et al.* showed that repeated homogenizer passes increase the purity of the inclusion bodies upon better fractionation of cell debris and inclusion bodies.⁴⁵⁷

Falconer *et al.* later suggested a chemical method through which the selective extraction of inclusion bodies can be achieved to produce recombinant proteins. The method involves the use of a urea and EDTA solution to permeabilize cell membranes for extraction of proteins from host cells, and the use of reagents that promote disulphide linkages to keep the inclusion bodies insoluble. Once the extraction compounds are removed, chaotropic and reducing conditions are used to solubilize the inclusion body protein.⁴²⁸ In another approach, a solution of EDTA and Triton X-100 was used to disintegrate cells while the inclusion bodies remained insoluble.⁴⁵⁸

8.3 Refolding techniques

A solubilization strategy must be formulated before proceeding with the refolding reaction. Starting from the isolation of inclusion bodies, most techniques aim at achieving the native structure of the protein, *i.e.* the unfolded state by using chaotropic agents such as guanidinium chloride (GdmCl) or urea at high concentrations in combination with reducing agents. Depending on the protein, the presence of some amount of native structure within the inclusion bodies could lead to higher yields. Additionally, high yields can be attained using detergents,⁴⁵⁹ buffers (at high pH),⁴⁶⁰ GdmCl, arginine,⁴⁶¹ and sodium hydroxide⁴⁶² as solvents.



Table 5 Additives used for protein renaturation and the prevention of aggregation

No.	Additive	Protein	Recovery yield (%)	Conditions	Ref.
(1) Small molecules					
(i)	Guanidinium chloride	P. fluorescence lipase	90	0.70 M with no optimum protein conc.	470
		HEWL	95	1.25 M with 1 mg mL ⁻¹ HEWL	455
		Carbonic Anhydrase II	96	1.0 mM with 0.50 mg mL ⁻¹ CA II	483
(ii)	Urea	Porcine growth hormone	85	3.5 M with 05 mg mL ⁻¹ PGH	484
		HEWL	40	4 M with 20 µg mL ⁻¹ HEWL	485
(iii)	L-Arginine	HEWL	94	0.75 M with 1 mg mL ⁻¹ HEWL	455
(iv)	Sulfobetaines	HEWL	35	1.8 M with 11.2 mg mL ⁻¹ HEWL	367
(2) Sugars					
(v)	Glycerol	HEWL	≥ 80	In presence of 50% glycerol with 20 µg mL ⁻¹ HEWL	485
(vi)	N-Acetyl glucosamine, glucose, sarcosine	HEWL	60–80	0.5 M, 1 M, 4 M resp.	485
(3) Short chains alcohols					
(vii)	n-Pentanol, n-hexanol, cyclohexanol	Carbonic anhydrase II	60–70	0.40 mM with 0.20 mg mL ⁻¹ CAII	483
(4) Salts					
(viii)	Ammonium sulphate	HEWL	≥ 70	1 M with 20 µg mL ⁻¹ HEWL	485
(5) Detergents and surfactants					
(ix)	Sodium lauryl sarcosine (SLS)	Single-chain Fv (SFv)	80	SFv solubilized in 2% SLS solution mixed with 10% Dowex resin	486
(x)	Chaps (derivative of cholic acid)	Carbonic Anhydrase II	80	31 mM with 0.50 mg mL ⁻¹ CA II	483
(xi)	Phospholipids	HEWL	95	0.19 mg mL ⁻¹ conc. with 0.1 mg mL ⁻¹ HEWL	487
(6) Polymers					
(xii)	PvLEA-22 (peptide; group 3 LEA protein)	HEWL	~ 80	Refolding probability calculated with DSC	417
(xiii)	N-tert-Butylacrylamide (TBAm) & acrylic acid (AAc) hydrogel	Lysozyme	75	50 µg mL ⁻¹ nanoparticle consisting of 70% TBAm & 10% Aac	479
(xiv)	Polymeric nanochaperones	HEWL	97	10:1 ratio of nanochaperone/HEWL	488
(xv)	Poly(p-phenylene vinylene) with p-nitrophenyl esters	Aβ42	—	Aβ plaques removed from mice brain slice after treatment (200 mm)	446
(xvi)	Poly sulfobetaine with butyl methacrylate (BuMA)	Insulin from bovine pancreas	40	1.5% polymer consisting of 30% BuMA	322
(xvii)	Poly(N-isopropylacrylamide) (PNIPAAm)	β-Lactamase	85	4 mg mL ⁻¹ polymer	473
		Carbonic anhydrase B	98.2	PNIPAAm with a molecular weight of 23 000	474
(xviii)	Eudragit S-100	α-Chymotrypsin	—	100% recovery of activity at a polymer; enzyme ratio of 1:1	475
		HEWL	81.3	0.4% (w/v) polymer with 1 mg mL ⁻¹ denatured lysozyme	476

Further, refolding must be initiated by the removal of denaturants and providing conditions that allow intramolecular interactions to occur, leading to the formation of the correct protein structure. However, this strategy has no general applicability as it varies with different proteins. Some of the compounds widely used for protein refolding are presented in Table 5.

To achieve an optimal yield, it is essential to study the appropriate refolding conditions for every protein which is possible only empirically. Refolding additives⁴⁶³ include denaturants (at low concentration), ionic and non-ionic detergents, and polyols such as sugars or alcohols, which may either promote the refolding of the protein or inhibit the process of aggregation.

8.3.1 Refolding caused by low molecular weight additives.

In 1998, Yasuda *et al.* investigated the effects of various cost-effective refolding additives such as organic solvents and detergents on the refolding of lysozyme.⁴⁶⁴ It was noted that the presence of acetoamide and acetone in the refolding mixture substantially enhanced the refolding yield. Acetoamide prevents the formation of the aggregates of lysozyme and it was evaluated with the use of dynamic light scattering (DLS) by monitoring the average size of the

lysozyme aggregates present in the mixture. In 2003, Umetsu *et al.* investigated the efficiency of GdmCl and L-arginine for the refolding of antibody fragments⁴⁶⁵ and determined the aggregation, formation of the proper structure, and formation of disulphide linkages. It was observed that the amalgamation of 1 M GdmCl and 0.4 M L-arginine stabilizes the partially folded intermediates, thus initiating refolding.

At small scales, refolding efficiencies can be improved using artificial chaperones,⁴⁶⁶ and redox pairs such as GSH-GSSG, since the use of chaperones is not feasible at large scales due to their requirement in stoichiometric proportions. Mini chaperones,⁴⁶⁷ GroEL and GroES,⁴⁶⁸ and oxidoreductases that shuffle disulphide bond formation⁴⁶⁹ have been used for immobilizing folding aids. Mannen *et al.* in 2001 reported the use of immobilized cyclodextrin to remove detergent from a denatured protein to allow refolding to occur.⁴⁷⁰

Aggregation can be suppressed by interference with the intermolecular hydrophobic interactions by using additives that can be easily removed once refolding is done. These additives may affect the solubility or the stability of the native, denatured,



and intermediate states by changing the ratios of folded and aggregated proteins.

The addition of L-arginine to proteins undergoing folding increases the yield of correctly folded proteins as it decreases the formation of aggregates. GdmCl enhances the solubility and stability of partially structured folding intermediates, which further leads to a decrease in the formation of aggregates. Polyethylene glycol (PEG) follows a similar mechanism to that of GdmCl. It interacts with the denatured states of the protein. Due to the partial hydrophobic character of PEG, it interacts with the hydrophobic side chains present in unfolded or partially folded polypeptides.

Alcohols, carbonic acid amides, and alkyl urea can also improve the efficiency of folding reactions *in vitro*. Adding cyclodextrin to the refolding buffer solution enhances refolding for some proteins.⁴⁷¹ It solubilizes the folding intermediates by interchelating the aromatic amino acid and hydrophobic side chains.⁴⁷² Additionally, surfactants and detergents promote proper folding by binding to the folding intermediates and reduce self-association. The detergents bind to the hydrophobic sites, which change the tertiary structure and dampen the fluctuations of amino acid side chains.

8.3.2 Refolding caused by polymeric inhibitors. In 2000, Lin *et al.* reported that poly(*N*-isopropylacrylamide) (PNIPAAm), a water-soluble non-ionic polymer, enhances the refolding of β -lactamase.⁴⁷³ This polymer can increase β -lactamase activity by more than 30% through the formation of complexes *via* hydrophobic interactions with the folding intermediates. Decrease in intermolecular hydrophobic interactions between the protein molecules results in higher renaturation yield of β -lactamase. Moreover, PNIPAAm exhibits a lower critical solution temperature (LCST) of approximately 32 °C, making it easier to separate from the renatured solution. Furthermore, it has been reported that PNIPAAm 23 000 effectively refolds carbonic anhydrase B with a refolding yield of 98.2%. PNIPAAm has high surface hydrophobicity owing to its high molecular weight and therefore, it exhibits higher efficacy in forming complexes with the aggregation-prone species.⁴⁷⁴

Roy *et al.* have demonstrated the refolding efficacy of Eudragit S-100, a pH-sensitive polymer poly(methyl methacrylate), which can recover 100% activity of α -chymotrypsin with a high refolding rate.⁴⁷⁵ The addition of Eudragit to the refolding solution also enhances the refolding of denatured lysozyme, increasing the yield up to 81%. Notably, Eudragit S-100 at pH ≥ 7 consists of carboxylate moieties, which are negatively charged and form complexes with the denatured protein through electrostatic interactions that further shield the hydrophobic surfaces of unfolded protein molecules, promoting hydrophobic-prone aggregation. Moreover, owing to the reversible nature of Eudragit polymer-protein interactions, the refolded lysozyme structure remains unaltered. Eudragit S-100 has also been shown to successfully recover the activities of transforming growth factor (TGF)- β 1 and keratinocyte growth factor (KGF)-2, even at lower concentrations.⁴⁷⁶

The naturally occurring anionic polymer alginate has been reported to be highly effective in recovering the activities of denatured urea and thermally denatured α -amylase.⁴⁷⁷

In 2008, Doyle *et al.* reported that the heat-shock protein 104 (Hsp104) along with caseinolytic peptidase B (ClpB) acts as a

protein disaggregating machine.⁴⁷⁸ The two chaperones catalyse the disaggregation of proteins by extracting the polypeptides from the protein aggregates *via* unfolding and translocation through Hsp104/ClpB cavities. Further, in 2016, Nakamoto *et al.* showed that acrylamide-based hydrogel nanoparticles can facilitate the refolding of positively charged denatured lysozymes.⁴⁷⁹ These nanoparticles showed high affinity towards the denatured protein and had weak interactions with the native protein. These features help in the refolding of aggregated proteins and enable the dissociation of the nanoparticles from the refolded proteins (Fig. 18).

Chaperones show a high affinity towards denatured proteins rather than native proteins. Similarly, the hydrogel nanoparticles encapsulate the denatured lysozymes. Nanoparticles bind with the lysozyme due to their high dimensional structure and functional monomer sequencing. The hydrophobic *N*-*tert*-butyl acrylamide (TBAm) derivative and the negatively charged acrylic lysozyme acid (AAc) hydrogel on polymerization (NP4) have shown high recovery yield indicating that the combination of both hydrophobic and anionic groups may facilitate the resolubilization of lysozyme aggregates. Due to the weak interaction of NP4 and native lysozyme, the refolded lysozyme is released from the nanoparticle, resulting in the potential refolding of the aggregated proteins.

In a recent study, we reported that the sulfobetaine-based zwitterionic polymer poly-SPB, which harbours the attached hydrophobic moiety BuMA suppressed insulin aggregation and further facilitated the refolding of denatured insulin *via* interactions with the hydrophobic domains of the denatured proteins.³²²

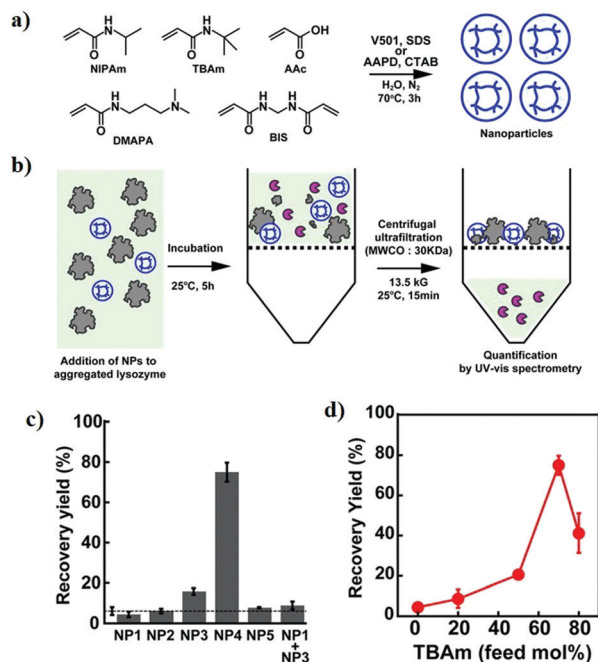


Fig. 18 Refolding of proteins by nanoparticles. (a) Preparation of hydrogel nanoparticles. (b) Schematic illustration of the yield of aggregated lysozyme. (c) Facilitated recovery yield of lysozyme by NP1–NP5 hydrogels, where NP1–NP5 indicates nanoparticles with different monomer ratios and (d) effect of hydrophobicity of TBAm in facilitating the refolding activity. Reproduced with permissions from ref. 479.



8.3.3 Refolding by dilution. Refolding can be initiated by diluting the unfolded proteins in the refolding buffer. In this method, the concentration of both chaotropes and proteins is reduced, which allows intramolecular interaction and prevents intermolecular associations. This refolding method is also preferred in industries due to the simple procedure. The procedure requires a stirring tank and feeding pumps at a controlled temperature. The resolubilized protein from inclusion bodies is dissolved in the refolding buffer solution and is kept for a fixed period. However, this technique poses a limitation for application at the industrial level as it requires a constant mixing time for the stirring tank reactor, which uses a high-power input. Moreover, it is difficult to maintain uniform mixing for the swift diffusion of the feed stream, leading to the formation of protein aggregates. In another report, Lee *et al.* used an oscillatory flow reactor for the refolding of lysozyme.⁴⁸⁰ In this device, the mixing intensity and the oscillatory Reynolds number (Re_o) are correlated with each other, defined by the oscillatory frequency and amplitude of the reactor.

$$Re_o = D\omega x_o/\nu$$

where D is the diameter of the tube, ω is the angular frequency of the oscillator, x_o is the oscillatory amplitude and ν refers to the kinematic viscosity; the selection of the operational parameters must be optimal to maintain the potency of the process. When using a continuous stirred tank reactor, ultrafiltration devices are required to remove the chaotropes and reducing agents from solubilized inclusion bodies to retain stable refolding conditions.⁴⁸¹

High yields of final refolded protein can be achieved using pulse renaturation or fed-batch dilution,⁴⁸² whose applicability is based on the stability of native proteins.

8.3.4 Refolding by pressure treatment. The use of pressurized tanks as refolding reactors is an alternate method for the refolding of proteins. This technique can be highly beneficial for proteins with high tendency to aggregate during refolding or purification. Hydrostatic pressures of 150–200 MPa allow the folding reaction to occur while inhibiting aggregation.⁴⁸⁹ In one study, aggregates resulting from agitation, chaotrope-induced aggregates, and bacterial inclusion bodies were subjected to high-pressure treatment in the presence of GdmCl at a non-denaturing concentration.⁴⁹⁰ The pressure treatment of inclusion bodies yielded significant levels of active proteins, and the P22 tail spike protein was refolded from aggregates.⁴⁹¹ Further studies on folding and aggregation resulting from treatment with different pressures showed that native proteins are recovered from aggregates after the pressure treatment,⁴⁹² and hence, this technique can be used for recycling proteins in the refolding process.

In 2015, Schoner *et al.* showed that bacterial inclusion bodies were activated through pressure refolding without the use of any denaturant, demonstrating that proteins prone to aggregation can be refolded using pressure treatments.⁴⁹³ Further, this technique enables the refolding of proteins at higher concentrations while reducing the use of chaotropic reagents.

8.3.5 Large scale chromatographic refolding. The size exclusion and adsorption-based chromatographic refolding processes can be used at high protein concentrations compared to the dilution technique. Schlegel *et al.* described a continuous matrix-assisted

refolding process for bovine- α -lactalbumin,⁴⁹⁴ and recombinant therapeutic proteins,⁴⁹⁵ using annular chromatography at different operational conditions.

In one study, renaturation of lysozyme was successfully implemented using simulated moving bed (SMB) chromatography.⁴⁹⁶ This process was structured by utilizing the lysozyme and denaturant partition coefficients, which are obtained from batch column experiments. However, the applicability of this process for refolding crude denatured protein is not known. In 2001, Cho *et al.* reported the use of expanded bed chromatography for crude samples.⁴⁹⁷ An ion exchange matrix was used for adsorption of the recombinant fusion protein, washing out of the cell debris and unbound constituents, and to exchange the buffer for the initiation of the refolding. The stability of the bed can be maintained by dilution of a high molarity urea buffer for reducing the applied sample volume.

9. Conclusions and outlook

Over the years, progress has been made to further develop efficient inhibitors of protein aggregation. Although several methods are in use, breakthroughs are required to enable the creation of a near-perfect technology for the protection of proteins from denaturation, and the development of more sensitive and easier characterization and separation techniques. Powerful and robust methods are required for characterization of protein aggregates. The size factor is crucial for detection of aggregates ranging from nanometers to microns in size. Therefore, prediction of aggregate formation is critical because of the possibility of artefact generation. Additionally, experimental approaches for solubilizing protein aggregates are necessary to identify quick fixes for the various stages of biopharmaceutical design. Assessment of biophysical and dynamic features of fibrils can be explored by the amalgamation of various techniques. The innovation of such technologies can pave the way for advanced clinical-grade approaches to observe aggregation for early diagnosis. Additionally, such techniques could help obtain insight into amyloidosis at the individual level.

Understanding the detailed molecular mechanism and the various steps involved in protein aggregation not only has academic significance but also increases the likelihood that efficient protecting strategies can be developed easily. As different proteins misfold *via* different pathways, uncovering mechanistic information is challenging. However, the consensus opinion is that when proteins misfold, hydrophobic domains are exposed and can interact with each other, leading to aggregation-inducing collisions, which result in the formation of large aggregates. Therefore, additives to inhibit aggregation should work in either of 3 ways; prevention of misfolding, suppression of collisions between the misfolded monomers/oligomers, or dissolution of the formed aggregates. In the first case, the protein retains all its functions and activities, and in the second case, a part of the activity is lost. However, the misfolded state is still reversible, and proteins can be made to undergo refolding under optimum conditions. In the third case, considerable activity is lost, and it is extremely difficult to return the protein to its native structure, necessitating



the removal of insoluble aggregates to circumvent aggregation-induced toxicity or occlusion of automated pumps used to deliver therapeutic proteins. Though difficult, an ideal strategy would be to prevent protein misfolding even when subjected to stress and the use of compounds to prevent aggregation-inducing collisions.

Over the last 3–4 decades, numerous small molecules and macromolecular aggregation inhibitors have been identified or developed that show relatively high efficiency in preventing misfolding or enabling refolding. Better therapeutic strategies could also be developed by using a cocktail of small molecule inhibitors for the treatment of protein aggregation-related diseases.

The utilization of polymers for inhibiting protein aggregation and facilitating refolding has ushered in a new era of protein-based therapeutics holding great promise. The field of polymer-based inhibitors is in its nascent stage and warrants further interest and dedicated research to overcome the current shortcomings, which would speed up the widespread application of protein-based therapeutics. In the various polymers and different categories described in this review, there appears to be no correlation between the mode of action between the different groups. The current mechanistic studies and details for polymeric inhibitors are inadequate, and additional analyses are required using different kinds of polymeric inhibitors, to reveal a common mode of action and to facilitate the rational design of more efficient polymeric materials in the future. Among the polymers described, polyelectrolytes, especially zwitterionic polymers and polyampholytes, are extremely effective in suppressing stress-induced aggregation of proteins. However, further research is needed to achieve the required efficacy for clinical applications. Drawbacks for their use include the high concentration required to suppress aggregation; therefore, the polymers should be further modified by modifying the functional group and architecture. Second, these polymers are non-biodegradable, which can pose serious challenges to their *in vivo* administration. Moreover, because polymer-based protein aggregation inhibitors have been developed only recently and hence, these agents have not yet been approved by the respective regulatory bodies. However, PEG- or polysaccharides-based compounds (already approved) can be employed for clinical applications if their activities are improved further.

Further, development of biocompatible protein delivery systems to protect therapeutic proteins from denaturation before delivery to the targeted area is required. The delivery vehicle should be able to specifically target the affected area and release the protein in a controlled manner. This can be achieved by transforming polymer-based protein aggregation inhibitors into a micelle/nanoparticle that can deliver as well as protect the proteins. It would be interesting to see some of the polymeric candidates discussed above being used or new classes being developed to deliver therapeutic proteins as well as aid the treatment of neurodegenerative diseases.

Conflicts of interest

There are no conflicts of interest to declare.

Acknowledgements

This work was supported in part by research grant Grant-in-Aid, KAKENHI (20K20197 and 20H04532), for scientific research from the Japan Society for the Promotion of Science and Adaptable and Seamless Technology transfer Program through Target-driven R&D from Japan Science and Technology Agency (JPMJTM19FB).

References

- 1 C. Ross and M. Poirier, *Nat. Med.*, 2004, **10**, S10–S17.
- 2 C. Soto and S. Pritzkow, *Nat. Neurosci.*, 2018, **21**, 1332–1340.
- 3 L. R. C. Vasconcellos, F. F. Dutra, M. S. Siqueira, H. A. Paula-Neto, J. Dahan, E. Kiarely, L. A. M. Carneiro, M. T. Bozza and L. H. Travassos, *Proc. Natl. Acad. Sci. U. S. A.*, 2016, **113**, E7474–E7482.
- 4 W. Wang, *Int. J. Pharm.*, 2005, **289**, 1–30.
- 5 C. J. Roberts, *Trends Biotechnol.*, 2014, **32**, 372–380.
- 6 Global Protein Therapeutics Market Analysis 2019, <https://www.researchandmarkets.com/reports/4857810/global-plasma-protein-therapeutics-market#rela0-4857806>.
- 7 Neurodegenerative Disease Market – Growth, Trends, and Forecast (2019–2024), https://www.reportlinker.com/p05865942/Neurodegenerative-Disease-Market-Growth-Trends-and-Forecast.html?utm_source=GNW.
- 8 P. K. Crane and R. S. Doody, *Neurology*, 2009, **73**, 1514–1516.
- 9 Y. Tizabi, L. L. Hurley, Z. Qualls and L. Akinfiresoye, *Molecules*, 2014, **19**, 20864–20879.
- 10 K. R. Chaudhuri and A. H. V. Schapira, *Lancet Neurol.*, 2009, **8**, 464–474.
- 11 A. K. Desai and G. T. Grossberg, *Neurology*, 2005, **64**, S34–S39.
- 12 Y. Mizuno, *Integr. Med. Int.*, 2014, **1**, 67–79.
- 13 S. J. Tabrizi, B. R. Leavitt, G. B. Landwehrmeyer, E. J. Wild, C. Saft, R. A. Barker, N. F. Blair, D. Craufurd, J. Priller, H. Rickards, A. Rosser, H. B. Kordasiewicz, C. Czech, E. E. Swayze, D. A. Norris, T. Baumann, I. Gerlach, S. A. Schobel, E. Paz, A. V. Smith, C. F. Bennett and R. M. Lane, *N. Engl. J. Med.*, 2019, **380**, 2307–2316.
- 14 T. I. Chandel, M. Zaman, M. V. Khan, M. Ali, G. Rabbani, M. Ishtikhar and R. H. Khan, *Int. J. Biol. Macromol.*, 2018, **106**, 1115–1129.
- 15 E. De Bernardes Clark, E. Schwarz and R. Rudolph, *Methods Enzymol.*, 1999, **309**, 217–236.
- 16 Z. Dhoulfi, K. Cuanalo-Contreras, E. A. Hayouni, C. E. Mays, C. Soto and I. Moreno-Gonzalez, *Cell. Mol. Life Sci.*, 2018, **75**, 3521–3538.
- 17 L. Estrada and C. Soto, *Curr. Pharm. Des.*, 2006, **12**, 2557–2567.
- 18 J. F. Carpenter, B. S. Kendrick, B. S. Chang, M. C. Manning and T. W. Randolph, *Methods Enzymol.*, 1999, **309**, 236–255.
- 19 P. Alam, K. Siddiqi, S. K. Chturvedi and R. H. Khan, *Int. J. Biol. Macromol.*, 2017, **103**, 208–219.
- 20 M. Bartolini and V. Andrisano, *ChemBioChem*, 2010, **11**, 1018–1035.



- 21 G. M. Cooper, *The Cell: A Molecular Approach*, Sinauer Associates, Sunderland (MA), 2nd edn, 2000.
- 22 J. T. Marinko, H. Huang, W. D. Penn, J. A. Capra, J. P. Schleich and C. R. Sanders, *Chem. Rev.*, 2019, **119**, 5537–5606.
- 23 L. L. Porter and G. D. Rose, *Proc. Natl. Acad. Sci. U. S. A.*, 2012, **109**, 9420–9425.
- 24 J. Verghese, J. Abrams, Y. Wang and K. A. Morano, *Microbiol. Mol. Biol. Rev.*, 2012, **76**, 115–158.
- 25 J. Tyedmers, A. Mogk and B. Bukau, *Nat. Rev. Mol. Cell Biol.*, 2010, **11**, 777–788.
- 26 E. Gaggelli, H. Kozlowski, D. Valensin and G. Valensin, *Chem. Rev.*, 2006, **106**, 1995–2044.
- 27 A. Zhang, W. Qi, T. A. Good and E. J. Fernandez, *Biophys. J.*, 2009, **96**, 1091–1104.
- 28 M. A. Findeis, G. M. Musso, C. C. Arico-Muendel, H. W. Benjamin, A. M. Hundal, J.-J. Lee, J. Chin, M. Kelley, J. Wakefield, N. J. Hayward and S. M. Molineaux, *Biochemistry*, 1999, **38**, 6791–6800.
- 29 A. Cao, D. Hu and L. Lai, *Protein Sci.*, 2004, **13**, 319–324.
- 30 A. I. Sulatskaya, E. A. Volova, Y. Y. Komissarchik, E. S. Snigirevskaya, A. A. Maskevich, E. A. Drobchenko, I. M. Kuznetsova and K. K. Turoverov, *Cell Tissue Biol.*, 2014, **8**, 186–191.
- 31 K. Araki, N. Yagi, K. Aoyama, C.-J. Choong, H. Hayakawa, H. Fujimura, Y. Nagai, Y. Goto and H. Mochizuki, *Proc. Natl. Acad. Sci. U. S. A.*, 2019, **116**, 17963–17969.
- 32 J. C. Sacchettini and J. W. Kelly, *Nat. Rev. Drug Discovery*, 2002, **1**, 267–275.
- 33 F. Hasecke, T. Miti, C. Perez, J. Barton, D. Schölzel, L. Gremer, C. S. R. Grüning, G. Matthews, G. Meisl, T. P. J. Knowles, D. Willbold, P. Neudecker, H. Heise, G. Ullah, W. Hoyer and M. Muschol, *Chem. Sci.*, 2018, **9**, 5937–5948.
- 34 L. F. Pease 3rd, M. Sorci, S. Guha, D.-H. Tsai, M. R. Zachariah, M. J. Tarlov and G. Belfort, *Biophys. J.*, 2010, **99**, 3979–3985.
- 35 W. Wang, S. Nema and D. Teagarden, *Int. J. Pharm.*, 2010, **390**, 89–99.
- 36 T. R. Jahn and S. E. Radford, *Arch. Biochem. Biophys.*, 2008, **469**, 100–117.
- 37 H.-X. Zhou and X. Pang, *Chem. Rev.*, 2018, **118**, 1691–1741.
- 38 A. S. Mahadevi and G. N. Sastry, *Chem. Rev.*, 2016, **116**, 2775–2825.
- 39 E. J. Nettleton, P. Tito, M. Sunde, M. Bouchard, C. M. Dobson and C. V. Robinson, *Biophys. J.*, 2000, **79**, 1053–1065.
- 40 M. V. Trivedi, J. S. Laurence and T. J. Sahaan, *Curr. Protein Pept. Sci.*, 2009, **10**, 614–625.
- 41 H. B. Cardoso, P. A. Wierenga, H. Gruppen and H. A. Schols, *Food Chem.*, 2019, **276**, 652–661.
- 42 O. V. Galzitskaya, *Curr. Protein Pept. Sci.*, 2016, **17**, 319–331.
- 43 A. L. P. Chapman, C. C. Winterbourn, S. O. Brennan, T. W. Jordan and A. J. Kettle, *Biochem. J.*, 2003, **375**, 33–40.
- 44 E. Lévy, N. El Banna, D. Baille, A. Heneman-Masurel, S. Truchet, H. Rezaei, M.-E. Huang, V. Béringue, D. Martin and L. Vernis, *Int. J. Mol. Sci.*, 2019, **20**, 3896.
- 45 A. L. Fink, *Folding Des.*, 1998, **3**, R9–R23.
- 46 W.-F. Xue, S. W. Homans and S. E. Radford, *Proc. Natl. Acad. Sci. U. S. A.*, 2008, **105**, 8926–8931.
- 47 H. Wu, *Adv. Protein Chem.*, 1995, **46**, 6–26.
- 48 A. J. Paul, K. Schwab, N. Prokoph, E. Haas, R. Handrick and F. Hesse, *Anal. Bioanal. Chem.*, 2015, **407**, 4849–4856.
- 49 M. Pindrus, S. J. Shire, R. F. Kelley, B. Demeule, R. Wong, Y. Xu and S. Yadav, *Mol. Pharmaceutics*, 2015, **12**, 3896–3907.
- 50 T. Arakawa, D. Ejima and T. Akuta, *Int. J. Biol. Macromol.*, 2017, **95**, 1153–1158.
- 51 A. Nayak, J. Colandene, V. Bradford and M. Perkins, *J. Pharm. Sci.*, 2011, **100**, 4198–4204.
- 52 B. C. Roughton, L. K. Iyer, E. Bertelsen, E. M. Topp and K. V. Camarda, *Comput. Chem. Eng.*, 2013, **58**, 369–377.
- 53 B. D. Connolly, L. Le, T. W. Patapoff, M. E. M. Cromwell, J. M. R. Moore and P. Lam, *J. Pharm. Sci.*, 2015, **104**, 4170–4184.
- 54 S. Hasanbašić, A. Jahić, S. Berbić, M. T. Znidarić and E. Zerovnik, *Oxid. Med. Cell. Longevity*, 2018, **2018**, 8613209.
- 55 V. H. Guaquil, J. C. Vera and D. W. Golde, *J. Biol. Chem.*, 2001, **276**, 40955–40961.
- 56 S. A. Giannos, E. R. Kraft, Z.-Y. Zhao, K. H. Merkle and J. Cai, *Pharm. Res.*, 2018, **35**, 78.
- 57 M. R. Nilsson, *Amyloid*, 2016, **23**, 139–147.
- 58 J. L. Cleland, M. F. Powell and S. J. Shire, *Crit. Rev. Ther. Drug Carrier Syst.*, 1993, **10**, 307–377.
- 59 D. B. Volkin and C. R. Middaugh, in *Stability of Protein Pharmaceuticals: Part A: Chemical and Physical Pathways of Protein Degradation*, ed. T. J. Ahern and M. C. Manning, Plenum, New York, 1992, pp. 215–247.
- 60 M. C. Manning, K. Patel and R. T. Borchardt, *Pharm. Res.*, 1989, **6**, 903–918.
- 61 J. F. Carpenter, B. S. W. Chang, W. Garzon-Rodriguez and T. W. Randolph, *Rational Design of Stable Lyophilized Protein Formulations: Theory and Practice*, in *Rational Design of Stable Protein Formulations*, ed. J. F. Carpenter and M. C. Manning, Springer US, Boston, MA, 2002, pp. 109–133.
- 62 A. Dong, S. J. Prestrelski, S. D. Allison and J. F. Carpenter, *J. Pharm. Sci.*, 1995, **84**, 415–424.
- 63 C. Tang, C.-H. Yin, Y.-Y. Pei, L. Yu and F.-Y. Gui, *Chin. Pharm. J.*, 2004, **39**, 764–768.
- 64 A. B. Joshi, E. Rus and L. E. Kirsch, *Int. J. Pharm.*, 2000, **203**, 115–125.
- 65 S. Onoue, K. Ohshima, K. Debari, K. Koh, S. Shioda, S. Iwasa, K. Kashimoto and T. Yajima, *Pharm. Res.*, 2004, **21**, 1274–1283.
- 66 R. E. Johnson, V. J. Hruby and J. A. Rupley, *Biochemistry*, 1979, **18**, 1176–1179.
- 67 J. S. Pedersen, D. Dikov, J. L. Flink, H. A. Hjuler, G. Christiansen and D. E. Otzen, *J. Mol. Biol.*, 2006, **355**, 501–523.
- 68 M. K. Joubert, Q. Luo, Y. Nashed-Samuel, J. Wypych and L. O. Narhi, *J. Biol. Chem.*, 2011, **286**, 25118–25133.
- 69 P. Arosio, S. Rima and M. Morbidelli, *Pharm. Res.*, 2013, **30**, 641–654.
- 70 M. L. Brader, T. Estey, S. Bai, R. W. Alston, K. K. Lucas, S. Lantz, P. Landsman and K. M. Maloney, *Mol. Pharmaceutics*, 2015, **12**, 1005–1017.
- 71 D. S. Goldberg, R. A. Lewus, R. Esfandiary, D. C. Farkas, N. Mody, K. J. Day, P. Mallik, M. B. Tracka, S. K. Sealey and H. S. Samra, *J. Pharm. Sci.*, 2017, **106**, 1971–1977.



- 72 R. Bansal, P. Srivastava, A. S. Rathore and P. Chokshi, *Chem. Eng. Sci.*, 2020, **216**, 115479.
- 73 N. C. Berchtold and C. W. Cotman, *Neurobiol. Aging*, 1998, **19**, 173–189.
- 74 J. D. Harper and P. T. Lansbury, *Annu. Rev. Biochem.*, 1997, **66**, 385–407.
- 75 J. Leitman, F. Ulrich Hartl and G. Z. Lederkremer, *Nat. Commun.*, 2013, **4**, 2753.
- 76 C. Haass and D. J. Selkoe, *Nat. Rev. Mol. Cell Biol.*, 2007, **8**, 101–112.
- 77 M. Arrasate, S. Mitra, E. S. Schweitzer, M. R. Segal and S. Finkbeiner, *Nature*, 2004, **431**, 805–810.
- 78 E. Cohen, J. Bieschke, R. M. Perciavalle, J. W. Kelly and A. Dillin, *Science*, 2006, **313**, 1604–1610.
- 79 I. W. Hamley, *Chem. Rev.*, 2012, **112**, 5147–5192.
- 80 J. J. Kayser, P. Arnold, A. Steffen-Heins, K. Schwarz and J. K. Keppler, *J. Food Eng.*, 2020, **270**, 109764.
- 81 A. A. Thorat, B. Munjal, T. W. Geders and R. Suryanarayanan, *J. Controlled Release*, 2020, **323**, 591–599.
- 82 K. L. Zapadka, F. J. Becher, S. Uddin, P. G. Varley, S. Bishop, A. L. Gomes dos Santos and S. E. Jackson, *J. Am. Chem. Soc.*, 2016, **138**, 16259–16265.
- 83 J. K. Keppler, T. R. Heyn, P. M. Meissner, K. Schrader and K. Schwarz, *Food Chem.*, 2019, **289**, 223–231.
- 84 T. R. Heyn, V. M. Garamus, H. R. Neumann, M. J. Uttinger, T. Guckeisen, M. Heuer, C. Selhuber-Unkel, W. Peukert and J. K. Keppler, *Eur. Polym. J.*, 2019, **120**, 109211.
- 85 Y. Wang, X. Wang, G. Wang and X. Wang, *J. Am. Oil Chem. Soc.*, 2020, DOI: 10.1002/aocs.12393.
- 86 A. Mishra, R. Bansal, S. Sreenivasan, R. Dash, S. Joshi, R. Singh, A. S. Rathore and G. Goel, *J. Chem. Inf. Model.*, 2020, **60**, 3304–3314.
- 87 E. Mari, C. Ricci, S. Pieraccini, F. Spinozzi, P. Mariani and M. G. Ortore, *Life*, 2020, **10**, 60.
- 88 G. Ge, Y. Han, J. Zheng, M. Zhao and W. Sun, *Food Chem.*, 2020, **309**, 125614.
- 89 E. Dachmann, V. Nobis, U. Kulozik and J. Dombrowski, *Food Hydrocolloids*, 2020, **107**, 105981.
- 90 H. Wu and T. W. Randolph, *J. Pharm. Sci.*, 2020, **109**, 1473–1482.
- 91 M. Wolz, E. Mersch and U. Kulozik, *Food Hydrocolloids*, 2016, **56**, 396–404.
- 92 R. Brogna, H. Oldenhof, H. Sieme, C. Figueiredo, T. Kerrinnes and W. F. Wolkers, *PLoS One*, 2020, **15**, e0234502.
- 93 Z. Zhao, K. Engholm-Keller, M. M. Poojary, S. G. Boelt, A. Rogowska-Wrzesinska, L. H. Skibsted, M. J. Davies and M. N. Lund, *J. Agric. Food Chem.*, 2020, **68**, 6701–6714.
- 94 T. Kaffe-Abramovich and R. Unger, *Folding Des.*, 1998, **3**, 389–399.
- 95 T. Sumi and K. Koga, *Sci. Rep.*, 2019, **9**, 5186.
- 96 C. N. Pace, B. A. Shirley, M. McNutt and K. Gajiwala, *FASEB J.*, 1996, **10**, 75–83.
- 97 R. Jaenicke, *Biochemistry*, 1991, **30**, 3147–3161.
- 98 R. Jaenicke and R. Rudolph, in *Protein structure: a practical approach*, ed. T. E. Creighton, IRL Press, Oxford, UK, 1989, pp. 191–223.
- 99 K. A. Dill, *Biochemistry*, 1990, **29**, 7133–7155.
- 100 F. Franks, R. H. M. Hatley and H. Friedman, *Biophys. Chem.*, 1988, **31**, 307–315.
- 101 J. M. Andrews and C. J. Roberts, *J. Phys. Chem. B*, 2007, **111**, 7897–7913.
- 102 C. J. Roberts, *J. Phys. Chem. B*, 2003, **107**, 1194–1207.
- 103 P. L. Privalov, *Crit. Rev. Biochem. Mol. Biol.*, 1990, **25**, 281–306.
- 104 P. L. Privalov and S. J. Gill, *Advances in protein chemistry*, Elsevier, 1988, vol. 39, pp. 191–234.
- 105 R. L. Remmele, S. D. Bhat, D. H. Phan and W. R. Gombotz, *Biochemistry*, 1999, **38**, 5241–5247.
- 106 A. I. Azuaga, C. M. Dobson, P. L. Mateo and F. Conejero-Lara, *Eur. J. Biochem.*, 2002, **269**, 4121–4133.
- 107 A. M. Tsai, J. H. van Zanten and M. J. Betenbaugh, *Biotechnol. Bioeng.*, 1998, **59**, 273–280.
- 108 B. Chen, T. Arakawa, C. F. Morris, W. C. Kenney, C. M. Wells and C. G. Pitt, *Pharm. Res.*, 1994, **11**, 1581–1587.
- 109 B. Luan, B. Shan, C. Baiz, A. Tokmakoff and D. P. Raleigh, *Biochemistry*, 2013, **52**, 2402–2409.
- 110 S. C. Meliga, W. Farrugia, P. A. Ramsland and R. J. Falconer, *J. Phys. Chem. B*, 2013, **117**, 490–494.
- 111 R. Wälchli, P.-J. Vermeire, J. Massant and P. Arosio, *J. Pharm. Sci.*, 2020, **109**, 595–602.
- 112 R. Esfandiary, A. Parupudi, J. Casas-Finet, D. Gadre and H. Sathish, *J. Pharm. Sci.*, 2015, **104**, 577–586.
- 113 R. Esfandiary, D. B. Hayes, A. Parupudi, J. Casas-finet, S. Bai, H. S. Samra, A. U. Shah and H. A. Sathish, *J. Pharm. Sci.*, 2013, **102**, 62–72.
- 114 Y. Wang, A. Lomakin, R. F. Latypov, J. P. Laubach, T. Hideshima, P. G. Richardson, N. C. Munshi, K. C. Anderson and G. B. Benedek, *J. Chem. Phys.*, 2013, **139**, 121904.
- 115 P. Atkins and J. De Paula, *Elements of physical chemistry*, Macmillan, 2009.
- 116 A. Oliva, J. B. Fariña and M. Llabrés, *J. Chromatogr. B: Anal. Technol. Biomed. Life Sci.*, 2016, **1022**, 206–212.
- 117 Z. Sahin, Y. K. Demir and V. Kayser, *Eur. J. Pharm. Sci.*, 2016, **86**, 115–124.
- 118 N. Chakroun, D. Hilton, S. S. Ahmad, G. W. Platt and P. A. Dalby, *Mol. Pharmaceutics*, 2016, **13**, 307–319.
- 119 J. M. Andrews and C. J. Roberts, *Biochemistry*, 2007, **46**, 7558–7571.
- 120 A. Fazeli, M. Haji-Abdolvahab, S. A. Shojaosadati, H. Schellekens, K. Khalifeh, A. A. Moosavi-Movahedi and M. R. Fazeli, *AAPS PharmSciTech*, 2014, **15**, 1619–1629.
- 121 W. Wang and C. J. Roberts, *AAPS J.*, 2013, **15**, 840–851.
- 122 D. Ramakrishna, M. D. Prasad and A. K. Bhuyan, *Arch. Biochem. Biophys.*, 2012, **528**, 67–71.
- 123 A. Saluja, V. Sadineni, A. Mungikar, V. Nashine, A. Kroetsch, C. Dahlheim and V. M. Rao, *Pharm. Res.*, 2014, **31**, 1575–1587.
- 124 F. Bickel, E. M. Herold, A. Signes, S. Romeijn, W. Jiskoot and H. Kiefer, *Eur. J. Pharm. Biopharm.*, 2016, **107**, 310–320.
- 125 D. Reichert, S. Gröger and C. Hackel, *Biopolymers*, 2017, **107**, 39–45.
- 126 M.-T. Schermeyer, A. K. Wöll, B. Kokke, M. Eppink and J. Hubbuch, *mAbs*, 2017, **9**, 1169–1185.



- 127 V. Filipe, B. Kükrer, A. Hawe and W. Jiskoot, *J. Pharm. Sci.*, 2012, **101**, 2327–2339.
- 128 G. V. Barnett, W. Qi, S. Amin, E. Neil Lewis and C. J. Roberts, *Biophys. Chem.*, 2015, **207**, 21–29.
- 129 L. Zhang, L. Yu, J. Zhang-Van Enk, G. Huang and J. Zhang, *J. Pharm. Sci.*, 2017, **106**, 3287–3292.
- 130 C. Calero-Rubio, R. Ghosh, A. Saluja and C. J. Roberts, *J. Pharm. Sci.*, 2018, **107**, 1269–1281.
- 131 E. Sahin, W. F. Weiss, A. M. Kroetsch, K. R. King, R. K. Kessler, T. K. Das and C. J. Roberts, *J. Pharm. Sci.*, 2012, **101**, 1678–1687.
- 132 T. Iwura, J. Fukuda, K. Yamazaki and F. Arisaka, *J. Biochem.*, 2014, **156**, 345–352.
- 133 L. Nielsen, R. Khurana, A. Coats, S. Frokjaer, J. Brange, S. Vyas, V. N. Uversky and A. L. Fink, *Biochemistry*, 2001, **40**, 6036–6046.
- 134 R. Pearlman and Y. J. Wang, *Formulation, characterization, and stability of protein drugs*, Springer Science & Business Media, 1996, vol. 9.
- 135 M. W. Townsend and P. P. DeLuca, *J. Pharm. Sci.*, 1990, **79**, 1083–1086.
- 136 S. Krishnan, E. Y. Chi, J. N. Webb, B. S. Chang, D. Shan, M. Goldenberg, M. C. Manning, T. W. Randolph and J. F. Carpenter, *Biochemistry*, 2002, **41**, 6422–6431.
- 137 A. Fatouros, T. Österberg and M. Mikaelsson, *Int. J. Pharm.*, 1997, **155**, 121–131.
- 138 K. Takano, K. Tsuchimori, Y. Yamagata and K. Yutani, *Biochemistry*, 2000, **39**, 12375–12381.
- 139 M. Kutsch, P. Hortmann, C. Herrmann, S. Weibels and H. Weingärtner, *Biointerphases*, 2016, **11**, 19008.
- 140 S. Wang, G. Wu, X. Zhang, Z. Tian, N. Zhang, T. Hu, W. Dai and F. Qian, *Eur. J. Pharm. Biopharm.*, 2017, **114**, 263–277.
- 141 W. G. Lilyestrom, S. Yadav, S. J. Shire and T. M. Scherer, *J. Phys. Chem. B*, 2013, **117**, 6373–6384.
- 142 A. K. Buell, P. Hung, X. Salvatella, M. E. Welland, C. M. Dobson and T. P. J. Knowles, *Biophys. J.*, 2013, **104**, 1116–1126.
- 143 K. Baumgartner, S. Großhans, J. Schütz, S. Suhm and J. Hubbuch, *J. Pharm. Biomed. Anal.*, 2016, **128**, 216–225.
- 144 P. Arosio, B. Jaquet, H. Wu and M. Morbidelli, *Biophys. Chem.*, 2012, **168–169**, 19–27.
- 145 S. Campioni, B. Mannini, J. P. López-Alonso, I. N. Shalova, A. Penco, E. Mulvihill, D. V. Laurents, A. Relini and F. Chiti, *J. Mol. Biol.*, 2012, **424**, 132–149.
- 146 B. C. Cunningham, M. G. Mulkerrin and J. A. Wells, *Science*, 1991, **253**, 545–548.
- 147 S. N. Timasheff, *Adv. Protein Chem.*, 1998, **51**, 355–432.
- 148 M. G. Cacace, E. M. Landau and J. J. Ramsden, *Q. Rev. Biophys.*, 1997, **30**, 241–277.
- 149 J. C. Lee and S. N. Timasheff, *J. Biol. Chem.*, 1981, **256**, 7193–7201.
- 150 L. Nicoud, M. Sozo, P. Arosio, A. Yates, E. Norrant and M. Morbidelli, *J. Phys. Chem. B*, 2014, **118**, 11921–11930.
- 151 A. M. Tsai, J. H. van Zanten and M. J. Betenbaugh, *Biotechnol. Bioeng.*, 1998, **59**, 281–285.
- 152 T. Arakawa and S. N. Timasheff, *Biochemistry*, 1984, **23**, 5912–5923.
- 153 R. A. Curtis, J. Ulrich, A. Montaser, J. M. Prausnitz and H. W. Blanch, *Biotechnol. Bioeng.*, 2002, **79**, 367–380.
- 154 B.-L. Chen, X. Wu, S. J. Babuka and M. Hora, *J. Pharm. Sci.*, 1999, **88**, 881–888.
- 155 M. Z. Zhang, J. Wen, T. Arakawa and S. J. Prestrelski, *Pharm. Res.*, 1995, **12**, 1447–1452.
- 156 D. S. Maclean, Q. Qian and C. R. Middaugh, *J. Pharm. Sci.*, 2002, **91**, 2220–2229.
- 157 I. K. Ventouri, D. B. A. Malheiro, R. L. C. Voeten, S. Kok, M. Honing, G. W. Somsen and R. Haselberg, *Anal. Chem.*, 2020, **92**, 4292–4300.
- 158 S. K. Senthil, P. K. Murugan, S. Selvam, J. P. Chandhana, T. G. S. Babu and E. Kandasamy, *Mater. Today: Proc.*, 2020, **33**, 2328–2330.
- 159 K. Uesugi, H. Ogi, M. Fukushima, M. So, H. Yagi, Y. Goto and M. Hirao, *Jpn. J. Appl. Phys.*, 2013, **52**, 07HE10.
- 160 L. Brückl, T. Schröder, S. Scheler, R. Hahn and C. Sonderegger, *J. Pharm. Sci.*, 2016, **105**, 1810–1818.
- 161 S. A. McBride, C. F. Tilger, S. P. Sanford, P. M. Tessier and A. H. Hirsra, *J. Phys. Chem. B*, 2015, **119**, 10426–10433.
- 162 S. Kiese, A. Pappengerger, W. Friess and H.-C. Mahler, *J. Pharm. Sci.*, 2008, **97**, 4347–4366.
- 163 G. Bai, J. S. Bee, J. G. Biddlecombe, Q. Chen and W. T. Leach, *Int. J. Pharm.*, 2012, **423**, 264–280.
- 164 A. S. Sediq, R. B. van Duijvenvoorde, W. Jiskoot and M. R. Nejadnik, *J. Pharm. Sci.*, 2016, **105**, 519–529.
- 165 A. V. Gandhi, M. R. Potheary, D. L. Bain and J. F. Carpenter, *J. Pharm. Sci.*, 2017, **106**, 2178–2186.
- 166 Y. Yoshimura, Y. Lin, H. Yagi, Y.-H. Lee, H. Kitayama, K. Sakurai, M. So, H. Ogi, H. Naiki and Y. Goto, *Proc. Natl. Acad. Sci. U. S. A.*, 2012, **109**, 14446–14451.
- 167 C. Zhou, W. Qi, E. N. Lewis, T. W. Randolph and J. F. Carpenter, *J. Pharm. Sci.*, 2016, **105**, 2302–2309.
- 168 V. Kumar, V. K. Sharma and D. S. Kalonia, *Int. J. Pharm.*, 2009, **366**, 88–98.
- 169 M. Agarkhed, C. O'Dell, M.-C. Hsieh, J. Zhang, J. Goldstein and A. Srivastava, *AAPS PharmSciTech*, 2013, **14**, 1–9.
- 170 C. Du, G. Barnett, A. Borwankar, A. Lewandowski, N. Singh, S. Ghose, M. Borys and Z. J. Li, *Eur. J. Pharm. Biopharm.*, 2018, **127**, 37–43.
- 171 S. R. Singh, J. Zhang, C. O'Dell, M.-C. Hsieh, J. Goldstein, J. Liu and A. Srivastava, *AAPS PharmSciTech*, 2012, **13**, 422–430.
- 172 A. Sreedhara, J. Yin, M. Joyce, K. Lau, A. T. Weckler, G. Deperalta, L. Yi, Y. John Wang, B. Kabakoff and R. S. K. Kishore, *Eur. J. Pharm. Biopharm.*, 2016, **100**, 38–46.
- 173 C. Arzeni, O. E. Pérez and A. M. R. Pilosof, *Food Hydrocolloids*, 2012, **29**, 308–316.
- 174 L. G. Stepanskiy, *J. Theor. Biol.*, 2012, **298**, 77–81.
- 175 H. Kiminami, A. B. Krueger, Y. Abe, K. Yoshino and J. F. Carpenter, *J. Pharm. Sci.*, 2017, **106**, 1001–1007.
- 176 R. Lumry and H. Eyring, *J. Phys. Chem.*, 1954, **58**, 110–120.
- 177 A. Singla, R. Bansal, V. Joshi and A. S. Rathore, *AAPS J.*, 2016, **18**, 689–702.
- 178 A. H. Pekar and B. H. Frank, *Biochemistry*, 1972, **11**, 4013–4016.



- 179 D. N. Brems, L. A. Alter, M. J. Beckage, R. E. Chance, R. D. DiMarchi, L. K. Green, H. B. Long, A. H. Pekar, J. E. Shields and B. H. Frank, *Protein Eng.*, 1992, **5**, 527–533.
- 180 J. R. Alford, B. S. Kendrick, J. F. Carpenter and T. W. Randolph, *J. Pharm. Sci.*, 2008, **97**, 3005–3021.
- 181 S. W. Raso, J. Abel, J. M. Barnes, K. M. Maloney, G. Pipes, M. J. Treuheit, J. King and D. N. Brems, *Protein Sci.*, 2005, **14**, 2246–2257.
- 182 B. S. Kendrick, J. F. Carpenter, J. L. Cleland and T. W. Randolph, *Proc. Natl. Acad. Sci. U. S. A.*, 1998, **95**, 14142–14146.
- 183 E. Y. Chi, S. Krishnan, T. W. Randolph and J. F. Carpenter, *Pharm. Res.*, 2003, **20**, 1325–1336.
- 184 R. Krishnamurthy and M. C. Manning, *Curr. Pharm. Biotechnol.*, 2002, **3**, 361–371.
- 185 S. Hermeling, H. Schellekens, C. Maas, M. F. B. G. Gebbink, D. J. A. Crommelin and W. Jiskoot, *J. Pharm. Sci.*, 2006, **95**, 1084–1096.
- 186 Y. K. Al-Hilaly, L. Biasetti, B. J. F. Blakeman, S. J. Pollack, S. Zibae, A. Abdul-Sada, J. R. Thorpe, W.-F. Xue and L. C. Serpell, *Sci. Rep.*, 2016, **6**, 39171.
- 187 A. K. Tyagi, T. W. Randolph, A. Dong, K. M. Maloney, C. Hitscherich Jr and J. F. Carpenter, *J. Pharm. Sci.*, 2009, **98**, 94–104.
- 188 E. Y. Chi, J. Weickmann, J. F. Carpenter, M. C. Manning and T. W. Randolph, *J. Pharm. Sci.*, 2005, **94**, 256–274.
- 189 H. G. Barth, C. Jackson and B. E. Boyes, *Anal. Chem.*, 1994, **66**, 595–620.
- 190 P. Hong, S. Koza and E. S. P. Bouvier, *J. Liq. Chromatogr. Relat. Technol.*, 2012, **35**, 2923–2950.
- 191 J. S. Philo, *Analysis of Aggregates and Particles in Protein Pharmaceuticals*, John Wiley & Sons, Ltd, 2012, pp. 303–333.
- 192 T. Wang, S. B. Joshi, O. S. Kumru, S. Telikepalli, C. R. Middaugh and D. B. Volkin, in *Biophysics for Therapeutic Protein Development*, ed. L. O. Narhi, Springer New York, New York, NY, 2013, pp. 205–243.
- 193 J. Janča, *TrAC, Trends Anal. Chem.*, 1983, **2**, 278–281.
- 194 H.-C. Mahler, W. Friess, U. Grauschopf and S. Kiese, *J. Pharm. Sci.*, 2009, **98**, 2909–2934.
- 195 A. P. Minton, *Anal. Biochem.*, 2016, **501**, 4–22.
- 196 D.-M. Smilgies and E. Folta-Stogniew, *J. Appl. Crystallogr.*, 2015, **48**, 1604–1606.
- 197 J. Stetefeld, S. A. McKenna and T. R. Patel, *Biophys. Rev.*, 2016, **8**, 409–427.
- 198 S. Amin, G. V. Barnett, J. A. Pathak, C. J. Roberts and P. S. Sarangapani, *Curr. Opin. Colloid Interface Sci.*, 2014, **19**, 438–449.
- 199 P. Garidel, A. Herre and W. Kliche, *Analysis of Aggregates and Particles in Protein Pharmaceuticals*, John Wiley & Sons, Ltd, 2012, pp. 269–302.
- 200 J. J. Sung, N. N. Pardeshi, A. M. Mulder, S. K. Mulligan, J. Quispe, K. On, B. Carragher, C. S. Potter, J. F. Carpenter and A. Schneemann, *J. Pharm. Sci.*, 2015, **104**, 750–759.
- 201 T. O. Pleshakova, N. S. Bukharina, A. I. Archakov and Y. D. Ivanov, *Int. J. Mol. Sci.*, 2018, **19**, 1142.
- 202 Y.-L. Chiang, Y.-C. Chang, I.-C. Chiang, H.-M. Mak, I.-S. Hwang and Y.-L. Shih, *PLoS One*, 2015, **10**, e0142506.
- 203 H. Fu, G. Grimsley, J. M. Scholtz and C. N. Pace, *Protein Sci.*, 2010, **19**, 1044–1052.
- 204 I. B. Durowoju, K. S. Bhandal, J. Hu, B. Carpick and M. Kirkitadze, *J. Visualized Exp.*, 2017, **121**, e55262.
- 205 C. M. Johnson, *Arch. Biochem. Biophys.*, 2013, **531**, 100–109.
- 206 D. Prozeller, S. Morsbach and K. Landfester, *Nanoscale*, 2019, **11**, 19265–19273.
- 207 M. De, C.-C. You, S. Srivastava and V. M. Rotello, *J. Am. Chem. Soc.*, 2007, **129**, 10747–10753.
- 208 K. Rajarathnam and J. Rösigen, *Biochim. Biophys. Acta*, 2014, **1838**, 69–77.
- 209 M. Winiewska, E. Bugajska and J. Poznański, *PLoS One*, 2017, **12**, e0173260.
- 210 R. Esfandiary and C. R. Middaugh, *Analysis of Aggregates and Particles in Protein Pharmaceuticals*, John Wiley & Sons, Ltd, 2012, pp. 169–200.
- 211 S. Patke, S. Srinivasan, R. Maheshwari, S. K. Srivastava, J. J. Aguilera, W. Colón and R. S. Kane, *PLoS One*, 2013, **8**, e64974.
- 212 L. H. Garcia-Rubio, C. A. Lopez-Menacho and S. Grossman, *Chem. Eng. Commun.*, 1993, **122**, 85–101.
- 213 S. Siddhanta, I. Barman and C. Narayana, *Soft Matter*, 2015, **11**, 7241–7249.
- 214 V. Joshi, T. Shivach, N. Yadav and A. S. Rathore, *Anal. Chem.*, 2014, **86**, 11606–11613.
- 215 H. Zhang, X. Zheng, R. T. K. Kwok, J. Wang, N. L. C. Leung, L. Shi, J. Z. Sun, Z. Tang, J. W. Y. Lam, A. Qin and B. Z. Tang, *Nat. Commun.*, 2018, **9**, 4961.
- 216 S. Benjwal, S. Verma, K.-H. Röhm and O. Gursky, *Protein Sci.*, 2006, **15**, 635–639.
- 217 A. Micsonai, F. Wien, L. Kernya, Y.-H. Lee, Y. Goto, M. Réfrégiers and J. Kardos, *Proc. Natl. Acad. Sci. U. S. A.*, 2015, **112**, E3095–E3103.
- 218 B. Shivu, S. Seshadri, J. Li, K. A. Oberg, V. N. Uversky and A. L. Fink, *Biochemistry*, 2013, **52**, 5176–5183.
- 219 E. Calabrò and S. Magazù, *Electromagn. Biol. Med.*, 2020, **39**, 129–138.
- 220 M. van de Weert and L. Jørgensen, *Analysis of Aggregates and Particles in Protein Pharmaceuticals*, John Wiley & Sons, Ltd, 2012, pp. 227–248.
- 221 M. B. Taraban, R. A. DePaz, B. Lobo and Y. B. Yu, *Anal. Chem.*, 2017, **89**, 5494–5502.
- 222 P. C. A. van der Wel, *Solid State Nucl. Magn. Reson.*, 2017, **88**, 1–14.
- 223 R. Linser, *Solid State Nucl. Magn. Reson.*, 2017, **87**, 45–53.
- 224 O. S. Makin and L. C. Serpell, *FEBS J.*, 2005, **272**, 5950–5961.
- 225 M. S. Hunter, D. P. DePonte, D. A. Shapiro, R. A. Kirian, X. Wang, D. Starodub, S. Marchesini, U. Weierstall, R. B. Doak, J. C. H. Spence and P. Fromme, *Biophys. J.*, 2011, **100**, 198–206.
- 226 L. Giehm, D. I. Svergun, D. E. Otzen and B. Vestergaard, *Proc. Natl. Acad. Sci. U. S. A.*, 2011, **108**, 3246–3251.
- 227 C. L. P. Oliveira and J. S. Pedersen, *Amyloid Fibrils and Prefibrillar Aggregates*, John Wiley & Sons, Ltd, 2013, pp. 85–102.



- 228 J. Porath and P. Flodin, *Nature*, 1959, **183**, 1657–1659.
- 229 H. G. Barth, B. E. Boyes and C. Jackson, *Anal. Chem.*, 1996, **68**, 445–466.
- 230 D. M. Walsh, D. M. Hartley, Y. Kusumoto, Y. Fezoui, M. M. Condrón, A. Lomakin, G. B. Benedek, D. J. Selkoe and D. B. Teplow, *J. Biol. Chem.*, 1999, **274**, 25945–25952.
- 231 D. M. Walsh, A. Lomakin, G. B. Benedek, M. M. Condrón and D. B. Teplow, *J. Biol. Chem.*, 1997, **272**, 22364–22372.
- 232 M. B. Podlisny, D. M. Walsh, P. Amarante, B. L. Ostaszewski, E. R. Stimson, J. E. Maggio, D. B. Teplow and D. J. Selkoe, *Biochemistry*, 1998, **37**, 3602–3611.
- 233 W. Wang, I. Perovic, J. Chittuluru, A. Kaganovich, L. T. T. Nguyen, J. Liao, J. R. Auclair, D. Johnson, A. Landeru, A. K. Simorellis, S. Ju, M. R. Cookson, F. J. Asturias, J. N. Agar, B. N. Webb, C. Kang, D. Ringe, G. A. Petsko, T. C. Pochapsky and Q. Q. Hoang, *Proc. Natl. Acad. Sci. U. S. A.*, 2011, **108**, 17797–17802.
- 234 A. Rekas, R. B. Knott, A. Sokolova, K. J. Barnham, K. A. Perez, C. L. Masters, S. C. Drew, R. Cappai, C. C. Curtain and C. L. L. Pham, *Eur. Biophys. J.*, 2010, **39**, 1407–1419.
- 235 K. Štulík, V. Pacáková and M. Tichá, *J. Biochem. Biophys. Methods*, 2003, **56**, 1–13.
- 236 J. Lebowitz, M. S. Lewis and P. Schuck, *Protein Sci.*, 2002, **11**, 2067–2079.
- 237 J. L. Cole, J. W. Lary, T. P. Moody and T. M. Laue, *Methods Cell Biol.*, 2008, **84**, 143–179.
- 238 P. Schuck, *Biophys. Rev.*, 2013, **5**, 159–171.
- 239 S. E. Harding and A. J. Rowe, *Biochem. Soc. Trans.*, 2010, **38**, 901–907.
- 240 J. P. Gabrielson, M. L. Brader, A. H. Pekar, K. B. Mathis, G. Winter, J. F. Carpenter and T. W. Randolph, *J. Pharm. Sci.*, 2007, **96**, 268–279.
- 241 T. Arakawa, D. Ejima, T. Li and J. S. Philo, *J. Pharm. Sci.*, 2010, **99**, 1674–1692.
- 242 J. P. Gabrielson, T. W. Randolph, B. S. Kendrick and M. R. Stoner, *Anal. Biochem.*, 2007, **361**, 24–30.
- 243 J. P. Gabrielson, K. K. Arthur, B. S. Kendrick, T. W. Randolph and M. R. Stoner, *J. Pharm. Sci.*, 2009, **98**, 50–62.
- 244 S. Cao, J. Pollastrini and Y. Jiang, *Curr. Pharm. Biotechnol.*, 2009, **10**, 382–390.
- 245 K.-G. Wahlund, *J. Chromatogr. A*, 2013, **1287**, 97–112.
- 246 W. Fraunhofer and G. Winter, *Eur. J. Pharm. Biopharm.*, 2004, **58**, 369–383.
- 247 H. Zhang and D. Lyden, *Nat. Protoc.*, 2019, **14**, 1027–1053.
- 248 J. Pollastrini, T. M. Dillon, P. Bondarenko and R. Y.-T. Chou, *Anal. Biochem.*, 2011, **414**, 88–98.
- 249 P. Y. Lee, J. Costumbrado, C.-Y. Hsu and Y. H. Kim, *J. Visualized Exp.*, 2012, **62**, e3923, DOI: 10.3791/3923.
- 250 A. B. Nowakowski, W. J. Wobig and D. H. Petering, *Metalomics*, 2014, **6**, 1068–1078.
- 251 D. A. Fancy and T. Kodadek, *Proc. Natl. Acad. Sci. U. S. A.*, 1999, **96**, 6020–6024.
- 252 A. M. Tsai, J. H. van Zanten and M. J. Betenbaugh, *Biotechnol. Bioeng.*, 1998, **59**, 273–280.
- 253 A. Ramzi, M. Sutter, W. E. Hennink and W. Jiskoot, *J. Pharm. Sci.*, 2006, **95**, 1703–1711.
- 254 M. Y. Lobanov, N. S. Bogatyreva and O. V. Galzitskaya, *Mol. Biol.*, 2008, **42**, 623–628.
- 255 C. Wang, X. Zhong, D. B. Ruffner, A. Stutt, L. A. Philips, M. D. Ward and D. G. Grier, *J. Pharm. Sci.*, 2016, **105**, 1074–1085.
- 256 P. A. Hassan, S. Rana and G. Verma, *Langmuir*, 2015, **31**, 3–12.
- 257 A. Lomakin, D. S. Chung, G. B. Benedek, D. A. Kirschner and D. B. Teplow, *Proc. Natl. Acad. Sci. U. S. A.*, 1996, **93**, 1125–1129.
- 258 A. Lomakin and D. B. Teplow, *Methods Mol. Biol.*, 2012, **849**, 69–83.
- 259 S. Watanabe and E. M. Jorgensen, *Methods Cell Biol.*, 2012, **111**, 283–306.
- 260 V. L. Anderson and W. W. Webb, *BMC Biotechnol.*, 2011, **11**, 125.
- 261 C. Goldsbury, U. Baxa, M. N. Simon, A. C. Steven, A. Engel, J. S. Wall, U. Aebi and S. A. Müller, *J. Struct. Biol.*, 2011, **173**, 1–13.
- 262 H. A. Bladen, M. U. Nylen and G. G. Glenner, *J. Ultrastruct. Res.*, 1966, **14**, 449–459.
- 263 L. Nielsen, S. Frokjaer, J. F. Carpenter and J. Brange, *J. Pharm. Sci.*, 2001, **90**, 29–37.
- 264 B. Michen, C. Geers, D. Vanhecke, C. Endes, B. Rothen-Rutishauser, S. Balog and A. Petri-Fink, *Sci. Rep.*, 2015, **5**, 9793.
- 265 E. Callaway, *Nature*, 2015, **525**, 172–174.
- 266 J. A. Rodriguez, M. I. Ivanova, M. R. Sawaya, D. Cascio, F. E. Reyes, D. Shi, S. Sangwan, E. L. Guenther, L. M. Johnson, M. Zhang, L. Jiang, M. A. Arbing, B. L. Nannenga, J. Hattne, J. Whitelegge, A. S. Brewster, M. Messerschmidt, S. Boutet, N. K. Sauter, T. Gonen and D. S. Eisenberg, *Nature*, 2015, **525**, 486–490.
- 267 K. J. Vargas, N. Schrod, T. Davis, R. Fernandez-Busnadiego, Y. V. Taguchi, U. Laugks, V. Lucic and S. S. Chandra, *Cell Rep.*, 2017, **18**, 161–173.
- 268 A. Ponce, S. Mejía-Rosales and M. José-Yacamán, *Methods Mol. Biol.*, 2012, **906**, 453–471.
- 269 H. Li, F. Rahimi, S. Sinha, P. Maiti, G. Bitan and K. Murakami, *Encyclopedia of Analytical Chemistry*, American Cancer Society, 2009.
- 270 A. K. Paravastu, R. D. Leapman, W.-M. Yau and R. Tycko, *Proc. Natl. Acad. Sci. U. S. A.*, 2008, **105**, 18349–18354.
- 271 A. Sen, U. Baxa, M. N. Simon, J. S. Wall, R. Sabate, S. J. Saube and A. C. Steven, *J. Biol. Chem.*, 2007, **282**, 5545–5550.
- 272 A. T. Petkova, R. D. Leapman, Z. Guo, W.-M. Yau, M. P. Mattson and R. Tycko, *Science*, 2005, **307**, 262–265.
- 273 B. Chen, K. R. Thurber, F. Shewmaker, R. B. Wickner and R. Tycko, *Proc. Natl. Acad. Sci. U. S. A.*, 2009, **106**, 14339–14344.
- 274 C. Wasmer, A. Lange, H. Van Melckebeke, A. B. Siemer, R. Riek and B. H. Meier, *Science*, 2008, **319**, 1523–1526.
- 275 R. W. Hepler, K. M. Grimm, D. D. Nahas, R. Breese, E. C. Dodson, P. Acton, P. M. Keller, M. Yeager, H. Wang, P. Shughrue, G. Kinney and J. G. Joyce, *Biochemistry*, 2006, **45**, 15157–15167.
- 276 W. B. J. Stine, S. W. Snyder, U. S. Lador, W. S. Wade, M. F. Miller, T. J. Perun, T. F. Holzman and G. A. Krafft, *J. Protein Chem.*, 1996, **15**, 193–203.



- 277 S. Grudzielanek, A. Velkova, A. Shukla, V. Smirnovas, M. Tatarek-Nossol, H. Rehage, A. Kapurniotu and R. Winter, *J. Mol. Biol.*, 2007, **370**, 372–384.
- 278 Y. Chen, J. Cai, Q. Xu and Z. W. Chen, *Mol. Immunol.*, 2004, **41**, 1247–1252.
- 279 C. Harnagea, M. Vallières, C. P. Pfeffer, D. Wu, B. R. Olsen, A. Pignolet, F. Légaré and A. Gruverman, *Biophys. J.*, 2010, **98**, 3070–3077.
- 280 M. Raspanti, M. Reguzzoni, M. Protasoni and D. Martini, *Biomacromolecules*, 2011, **12**, 4344–4347.
- 281 X. Zheng, H. Pan, Z. Wang and H. Chen, *J. Microsc.*, 2011, **241**, 162–170.
- 282 Y. Chen, Y. Wu and J. Cai, *Biochem. Biophys. Res. Commun.*, 2007, **361**, 391–397.
- 283 I. Greving, M. Cai, F. Vollrath and H. C. Schniepp, *Biomacromolecules*, 2012, **13**, 676–682.
- 284 M. E. van Raaij, I. M. J. Segers-Nolten and V. Subramaniam, *Biophys. J.*, 2006, **91**, L96–L98.
- 285 T. Kowalewski and D. M. Holtzman, *Proc. Natl. Acad. Sci. U. S. A.*, 1999, **96**, 3688–3693.
- 286 G. Bruylants, J. Wouters and C. Michaux, *Curr. Med. Chem.*, 2005, **12**, 2011–2020.
- 287 R. O'Brien and I. Haq, *Biocalorimetry 2*, John Wiley & Sons, Ltd, 2005, pp. 1–34.
- 288 M. J. Cliff and J. E. Ladbury, *J. Mol. Recognit.*, 2003, **16**, 383–391.
- 289 R. Zhao, M. So, H. Maat, N. Ray, F. Arisaka, Y. Goto, J. Carver and D. Hall, *Biophys. Rev.*, 2016, **8**, 445–471.
- 290 L. H. Lucas, B. A. Ersoy, L. A. Kueltszo, S. B. Joshi, D. T. Brandau, N. Thyagarajapuram, L. J. Peek and C. R. Middaugh, *Protein Sci.*, 2006, **15**, 2228–2243.
- 291 S. V. Thakkar, K. M. Allegra, S. B. Joshi, D. B. Volkin and C. R. Middaugh, *J. Pharm. Sci.*, 2012, **101**, 3051–3061.
- 292 G. Rao, V. Iyer, M. P. Kosloski, D. S. Pisal, E. Shin, C. R. Middaugh and S. V. Balu-Iyer, *J. Pharm. Sci.*, 2010, **99**, 1697–1706.
- 293 C. R. Middaugh, J. M. Kehoe, M. B. Prystowsky, B. Gerber-Jenson, J. C. Jenson and G. W. Litman, *Immunochemistry*, 1978, **15**, 171–187.
- 294 W. Wang, Y. J. Wang and D. Q. Wang, *Int. J. Pharm.*, 2008, **347**, 31–38.
- 295 G. A. Eberlein, P. R. Stratton and Y. J. Wang, *PDA J. Pharm. Sci. Technol.*, 1994, **48**, 224–230.
- 296 C. Lendel, B. Bolognesi, A. Wahlström, C. M. Dobson and A. Gräslund, *Biochemistry*, 2010, **49**, 1358–1360.
- 297 Y. S. Kim, T. W. Randolph, M. C. Manning, F. J. Stevens and J. F. Carpenter, *J. Biol. Chem.*, 2003, **278**, 10842–10850.
- 298 P. Frid, S. V. Anisimov and N. Popovic, *Brain Res. Rev.*, 2007, **53**, 135–160.
- 299 M. Groenning, *J. Chem. Biol.*, 2010, **3**, 1–18.
- 300 H. Naiki, K. Higuchi, M. Hosokawa and T. Takeda, *Anal. Biochem.*, 1989, **177**, 244–249.
- 301 A. Hawe, M. Sutter and W. Jiskoot, *Pharm. Res.*, 2008, **25**, 1487–1499.
- 302 M. R. H. Krebs, E. H. C. Bromley and A. M. Donald, *J. Struct. Biol.*, 2005, **149**, 30–37.
- 303 M. Biancalana, K. Makabe, A. Koide and S. Koide, *J. Mol. Biol.*, 2009, **385**, 1052–1063.
- 304 V. I. Stsiapura, A. A. Maskevich, V. A. Kuzmitsky, K. K. Turoverov and I. M. Kuznetsova, *J. Phys. Chem. A*, 2007, **111**, 4829–4835.
- 305 V. Foderà, F. Librizzi, M. Groenning, M. van de Weert and M. Leone, *J. Phys. Chem. B*, 2008, **112**, 3853–3858.
- 306 A. Bothra, A. Bhattacharyya, C. Mukhopadhyay, K. Bhattacharyya and S. Roy, *J. Biomol. Struct. Dyn.*, 1998, **15**, 959–966.
- 307 B. Ranjbar and P. Gill, *Chem. Biol. Drug Des.*, 2009, **74**, 101–120.
- 308 N. J. Greenfield, *Nat. Protoc.*, 2006, **1**, 2876–2890.
- 309 S. Frokjaer and D. E. Otzen, *Nat. Rev. Drug Discovery*, 2005, **4**, 298–306.
- 310 C. Perez-Iratxeta and M. A. Andrade-Navarro, *BMC Struct. Biol.*, 2008, **8**, 25.
- 311 L. Whitmore and B. A. Wallace, *Nucleic Acids Res.*, 2004, **32**, 668–673.
- 312 X. Li-Blatter and J. Seelig, *J. Phys. Chem. B*, 2019, **123**, 10181–10191.
- 313 S. Ma, X. Cao, M. Mak, A. Sadik, C. Walkner, T. B. Freedman, I. K. Lednev, R. K. Dukor and L. A. Nafie, *J. Am. Chem. Soc.*, 2007, **129**, 12364–12365.
- 314 P. I. Haris and F. Severcan, *J. Mol. Catal. B: Enzym.*, 1999, **7**, 207–221.
- 315 B. W. Caughey, A. Dong, K. S. Bhat, D. Ernst, S. F. Hayes and W. S. Caughey, *Biochemistry*, 1991, **30**, 7672–7680.
- 316 H. Li, R. Lantz and D. Du, *Molecules*, 2019, **24**, 186.
- 317 P. Kheddo, M. J. Cliff, S. Uddin, C. F. van der Walle and A. P. Golovanov, *mAbs*, 2016, **8**, 1245–1258.
- 318 N. L. Fawzi, J. Ying, D. A. Torchia and G. M. Clore, *J. Am. Chem. Soc.*, 2010, **132**, 9948–9951.
- 319 K.-P. Wu and J. Baum, *J. Am. Chem. Soc.*, 2010, **132**, 5546–5547.
- 320 T. Muraoka, K. Adachi, M. Ui, S. Kawasaki, N. Sadhukhan, H. Obara, H. Tochio, M. Shirakawa and K. Kinbara, *Angew. Chem., Int. Ed.*, 2013, **52**, 2430–2434.
- 321 J. Cavanagh, W. J. Fairbrother, A. G. Palmer III, M. Rance and N. J. Skelton, *Protein NMR Spectroscopy*, Academic Press, Burlington, 2nd edn, 2007.
- 322 R. Rajan, Y. Suzuki and K. Matsumura, *Macromol. Biosci.*, 2018, **18**, 1800016.
- 323 J. T. Pedersen and N. H. H. Heegaard, *Anal. Chem.*, 2013, **85**, 4215–4227.
- 324 M. Ahmed, J. Davis, D. Aucoin, T. Sato, S. Ahuja, S. Aimoto, J. I. Elliott, W. E. Van Nostrand and S. O. Smith, *Nat. Struct. Mol. Biol.*, 2010, **17**, 561–567.
- 325 S. Chimon, M. A. Shaibat, C. R. Jones, D. C. Calero, B. Aizezi and Y. Ishii, *Nat. Struct. Mol. Biol.*, 2007, **14**, 1157–1164.
- 326 H. Heise, M. S. Celej, S. Becker, D. Riedel, A. Pelah, A. Kumar, T. M. Jovin and M. Baldus, *J. Mol. Biol.*, 2008, **380**, 444–450.
- 327 A. K. Paravastu, I. Qahwash, R. D. Leapman, S. C. Meredith and R. Tycko, *Proc. Natl. Acad. Sci. U. S. A.*, 2009, **106**, 7443–7448.
- 328 V. Prasanna, B. Gopal, M. R. Murthy, D. V. Santi and P. Balaram, *Proteins*, 1999, **34**, 356–368.



- 329 K. Hinds, J. J. Koh, L. Joss, F. Liu, M. Baudys and S. W. Kim, *Bioconjugate Chem.*, 2000, **11**, 195–201.
- 330 L. G. Czaplewski, J. McKeating, C. J. Craven, L. D. Higgins, V. Appay, A. Brown, T. Dudgeon, L. A. Howard, T. Meyers, J. Owen, S. R. Palan, P. Tan, G. Wilson, N. R. Woods, C. M. Heyworth, B. I. Lord, D. Brotherton, R. Christison, S. Craig, S. Cribbes, R. M. Edwards, S. J. Evans, R. Gilbert, P. Morgan, E. Randle, N. Schofield, P. G. Varley, J. Fisher, J. P. Waltho and M. G. Hunter, *J. Biol. Chem.*, 1999, **274**, 16077–16084.
- 331 K. Y. Fang, S. A. Lieblich and D. A. Tirrell, *J. Polym. Sci., Part A: Polym. Chem.*, 2019, **57**, 264–267.
- 332 S. A. Lieblich, K. Y. Fang, J. K. B. Cahn, J. Rawson, J. LeBon, H. T. Ku and D. A. Tirrell, *J. Am. Chem. Soc.*, 2017, **139**, 8384–8387.
- 333 D. Samuel, T. K. Kumar, G. Ganesh, G. Jayaraman, P. W. Yang, M. M. Chang, V. D. Trivedi, S. L. Wang, K. C. Hwang, D. K. Chang and C. Yu, *Protein Sci.*, 2000, **9**, 344–352.
- 334 M. Kudou, K. Shiraki, S. Fujiwara, T. Imanaka and M. Takagi, *Eur. J. Biochem.*, 2003, **270**, 4547–4554.
- 335 E. De Bernardes Clark, D. Hevehan, S. Szela and J. Maachupalli-Reddy, *Biotechnol. Prog.*, 1998, **14**, 47–54.
- 336 R. Rudolph and H. Lilie, *FASEB J.*, 1996, **10**, 49–56.
- 337 P. Alam, K. Siddiqi, S. K. Chturvedi and R. H. Khan, *Int. J. Biol. Macromol.*, 2017, **103**, 208–219.
- 338 S. Prabhudesai, S. Sinha, A. Attar, A. Kotagiri, A. G. Fitzmaurice, R. Lakshmanan, M. I. Ivanova, J. A. Loo, F.-G. Klärner, T. Schrader, M. Stahl, G. Bitan and J. M. Bronstein, *Neurotherapeutics*, 2012, **9**, 464–476.
- 339 S. Sinha, D. H. J. Lopes, Z. Du, E. S. Pang, A. Shanmugam, A. Lomakin, P. Talbiersky, A. Tennstaedt, K. McDaniel, R. Bakshi, P.-Y. Kuo, M. Ehrmann, G. B. Benedek, J. A. Loo, F.-G. Klärner, T. Schrader, C. Wang and G. Bitan, *J. Am. Chem. Soc.*, 2011, **133**, 16958–16969.
- 340 A. Gaeta and R. C. Hider, *Br. J. Pharmacol.*, 2005, **146**, 1041–1059.
- 341 M. Di Vaira, C. Bazzicalupi, P. Orioli, L. Messori, B. Bruni and P. Zatta, *Inorg. Chem.*, 2004, **43**, 3795–3797.
- 342 C. Cabaleiro-Lago, I. Lynch, K. A. Dawson and S. Linse, *Langmuir*, 2010, **26**, 3453–3461.
- 343 A. Bellova, E. Bystrenova, M. Koneracka, P. Kopcansky, F. Valle, N. Tomasovicova, M. Timko, J. Bagelova, F. Biscarini and Z. Gazova, *Nanotechnology*, 2010, **21**, 65103.
- 344 S. Il Yoo, M. Yang, J. R. Brender, V. Subramanian, K. Sun, N. E. Joo, S.-H. Jeong, A. Ramamoorthy and N. A. Kotov, *Angew. Chem., Int. Ed.*, 2011, **50**, 5110–5115.
- 345 H. A. Popiel, T. Takeuchi, J. R. Burke, W. J. Strittmatter, T. Toda, K. Wada and Y. Nagai, *Neurotherapeutics*, 2013, **10**, 440–446.
- 346 K. Rajasekhar, S. N. Suresh, R. Manjithaya and T. Govindaraju, *Sci. Rep.*, 2015, **5**, 8139.
- 347 J. A. Loureiro, R. Crespo, H. Börner, P. M. Martins, F. A. Rocha, M. Coelho, M. C. Pereira and S. Rocha, *J. Mater. Chem. B*, 2014, **2**, 2259–2264.
- 348 E.-N. Lee, H.-J. Cho, C.-H. Lee, D. Lee, K. C. Chung and S. R. Paik, *Biochemistry*, 2004, **43**, 3704–3715.
- 349 A. A. Valiente-Gabioud, M. C. Miotto, M. E. Chesta, V. Lombardo, A. Binolfi and C. O. Fernández, *Acc. Chem. Res.*, 2016, **49**, 801–808.
- 350 P. W. Yang, T. K. Kumar, G. Jayaraman and C. Yu, *Biochem. Mol. Biol. Int.*, 1996, **38**, 393–399.
- 351 V. Srinivas and D. Balasubramanian, *Langmuir*, 1995, **11**, 2830–2833.
- 352 U. Brinkmann, J. Buchner and I. Pastan, *Proc. Natl. Acad. Sci. U. S. A.*, 1992, **89**, 3075–3079.
- 353 R. Sakamoto, S. Nishikori and K. Shiraki, *Biotechnol. Prog.*, 2004, **20**, 1128–1133.
- 354 J. Buchner and R. Rudolph, *Biotechnology*, 1991, **9**, 157–162.
- 355 A. Sgarbossa, *Int. J. Mol. Sci.*, 2012, **13**, 17121–17137.
- 356 J. Folch, M. Ettcheto, D. Petrov, S. Abad, I. Pedrós, M. Marin, J. Olloquequi and A. Camins, *Neurologia*, 2018, **33**, 47–58.
- 357 J. M. Ringman, S. A. Frautschy, G. M. Cole, D. L. Masterman and J. L. Cummings, *Curr. Alzheimer Res.*, 2005, **2**, 131–136.
- 358 M. de la Luz Cádiz-Gurrea, S. Fernández-Arroyo and A. Segura-Carretero, *Int. J. Mol. Sci.*, 2014, **15**, 20382–20402.
- 359 J. W. Betts, A. S. Sharili, L. M. Phee and D. W. Wareham, *J. Nat. Prod.*, 2015, **78**, 2145–2148.
- 360 N. Bitu Pinto, B. da Silva Alexandre, K. R. T. Neves, A. H. Silva, L. K. A. M. Leal and G. S. B. Viana, *J. Evidence-Based Complementary Altern. Med.*, 2015, **2015**, 161092.
- 361 F. Yang, G. P. Lim, A. N. Begum, O. J. Ubeda, M. R. Simmons, S. S. Ambegaokar, P. P. Chen, R. Kaye, C. G. Glabe, S. A. Frautschy and G. M. Cole, *J. Biol. Chem.*, 2005, **280**, 5892–5901.
- 362 K. Ono and M. Yamada, *Neurobiol. Dis.*, 2007, **25**, 446–454.
- 363 S. M. Yatin, S. Varadarajan and D. A. Butterfield, *J. Alzheimer's Dis.*, 2000, **2**, 123–131.
- 364 Z. Liu, T. Zhou, A. C. Ziegler, P. Dimitrion and L. Zuo, *Oxid. Med. Cell. Longevity*, 2017, **2017**, 2525967.
- 365 K. Brieger, S. Schiavone, F. J. J. Miller and K.-H. Krause, *Swiss Med. Wkly.*, 2012, **142**, w13659.
- 366 V. Lobo, A. Patil, A. Phatak and N. Chandra, *Pharmacogn. Rev.*, 2010, **4**, 118–126.
- 367 M. E. Goldberg, N. Expert-Bezançon, L. Vuillard and T. Rabilloud, *Folding Des.*, 1996, **1**, 21–27.
- 368 L. Vuillard, T. Rabilloud and M. E. Goldberg, *Eur. J. Biochem.*, 1998, **256**, 128–135.
- 369 K. Wangkanont, K. T. Forest and L. L. Kiessling, *Protein Expression Purif.*, 2015, **115**, 19–25.
- 370 N. Expert-Bezançon, T. Rabilloud, L. Vuillard and M. E. Goldberg, *Biophys. Chem.*, 2003, **100**, 469–479.
- 371 M. Hagihara, A. Takei, T. Ishii, F. Hayashi, K. Kubota, K. Wakamatsu and N. Nameki, *FEBS Open Bio*, 2012, **2**, 20–25.
- 372 S. Choudhary, N. Kishore and R. V. Hosur, *Sci. Rep.*, 2015, **5**, 17599.
- 373 M. Dasgupta and N. Kishore, *PLoS One*, 2017, **12**, e0172208.
- 374 A. Venkatraman, E. Murugan, S. J. Lin, G. S. L. Peh, L. Rajamani and J. S. Mehta, *Sci. Rep.*, 2020, **10**, 4011.
- 375 K. Tsumoto, M. Umetsu, I. Kumagai, D. Ejima, J. S. Philo and T. Arakawa, *Biotechnol. Prog.*, 2004, **20**, 1301–1308.



- 376 S. Choudhary, S. N. Save, N. Kishore and R. V. Hosur, *PLoS One*, 2016, **11**, e0166487.
- 377 V. L. N. Ngoungoure, J. Schluesener, P. F. Moundipa and H. Schluesener, *Mol. Nutr. Food Res.*, 2015, **59**, 8–20.
- 378 S. Ghosh, S. Banerjee and P. C. Sil, *Food Chem. Toxicol.*, 2015, **83**, 111–124.
- 379 N. Ahsan, S. Mishra, M. K. Jain, A. Surolia and S. Gupta, *Sci. Rep.*, 2015, **5**, 9862.
- 380 Y. Song, E. G. Moore, Y. Guo and J. S. Moore, *J. Am. Chem. Soc.*, 2017, **139**, 4298–4301.
- 381 A. J. Doig, *Curr. Opin. Drug Discovery Dev.*, 2007, **10**, 533–539.
- 382 C. Adessi and C. Soto, *Curr. Med. Chem.*, 2002, **9**, 963–978.
- 383 P. Alam, S. K. Chaturvedi, M. K. Siddiqi, R. K. Rajpoot, M. R. Ajmal, M. Zaman and R. H. Khan, *Sci. Rep.*, 2016, **6**, 26759.
- 384 N. V. Katre, *Adv. Drug Delivery Rev.*, 1993, **10**, 91–114.
- 385 F. Kreppel and S. Kochanek, *Mol. Ther.*, 2008, **16**, 16–29.
- 386 F. M. Veronese and G. Pasut, *Drug Discovery Today*, 2005, **10**, 1451–1458.
- 387 A. Kolate, D. Baradia, S. Patil, I. Vhora, G. Kore and A. Misra, *J. Controlled Release*, 2014, **192**, 67–81.
- 388 A. Bunker, *Phys. Procedia*, 2012, **34**, 24–33.
- 389 J. D. Belsey, M. Geraint and T. A. Dixon, *Int. J. Clin. Pract.*, 2010, **64**, 944–955.
- 390 J. A. Di Palma, J. R. Smith and M. vB Cleveland, *Am. J. Gastroenterol.*, 2002, **97**, 1776–1779.
- 391 S.-L. Chen, R.-H. Fu, S.-F. Liao, S.-P. Liu, S.-Z. Lin and Y.-C. Wang, *Cell Transplant.*, 2018, **27**, 275–284.
- 392 D. S. Pisal, M. P. Kosloski and S. V. Balu-Iyer, *J. Pharm. Sci.*, 2010, **99**, 2557–2575.
- 393 J. K. Dozier and M. D. Distefano, *Int. J. Mol. Sci.*, 2015, **16**, 25831–25864.
- 394 J. M. Harris and R. B. Chess, *Nat. Rev. Drug Discovery*, 2003, **2**, 214–221.
- 395 N. Kameta, T. Matsuzawa, K. Yaoi and M. Masuda, *RSC Adv.*, 2016, **6**, 36744–36750.
- 396 K. Ikeda, T. Okada, S.-I. Sawada, K. Akiyoshi and K. Matsuzaki, *FEBS Lett.*, 2006, **580**, 6587–6595.
- 397 S. Sawada, Y. Sasaki, Y. Nomura and K. Akiyoshi, *Colloid Polym. Sci.*, 2011, **289**, 685–691.
- 398 Y. Nomura, M. Ikeda, N. Yamaguchi, Y. Aoyama and K. Akiyoshi, *FEBS Lett.*, 2003, **553**, 271–276.
- 399 T. Furuki and M. Sakurai, *Cryobiol. Cryotechnol.*, 2016, **62**, 47–51.
- 400 D. K. Hinch and A. Thalhammer, *Biochem. Soc. Trans.*, 2012, **40**, 1000–1003.
- 401 K. Goyal, L. J. Walton and A. Tunnacliffe, *Biochem. J.*, 2005, **388**, 151–157.
- 402 T. Furuki and M. Sakurai, *Biochim. Biophys. Acta, Proteins Proteomics*, 2016, **1864**, 1237–1243.
- 403 R. Rajan and K. Matsumura, *J. Mater. Chem. B*, 2015, **3**, 5683–5689.
- 404 R. Rajan and K. Matsumura, *Sci. Rep.*, 2017, **7**, 45777.
- 405 R. J. Mancini, J. Lee and H. D. Maynard, *J. Am. Chem. Soc.*, 2012, **134**, 8474–8479.
- 406 J. Lee, E.-W. Lin, U. Y. Lau, J. L. Hedrick, E. Bat and H. D. Maynard, *Biomacromolecules*, 2013, **14**, 2561–2569.
- 407 H. Sun, J. Liu, S. Li, L. Zhou, J. Wang, L. Liu, F. Lv, Q. Gu, B. Hu, Y. Ma and S. Wang, *Angew. Chem., Int. Ed.*, 2019, **58**, 5988–5993.
- 408 R. Chai, C. Xing, J. Qi, Y. Fan, H. Yuan, R. Niu, Y. Zhan and J. Xu, *Adv. Funct. Mater.*, 2016, **26**, 9026–9031.
- 409 L. Breydo, B. Newland, H. Zhang, A. Rosser, C. Werner, V. N. Uversky and W. Wang, *Biochem. Biophys. Res. Commun.*, 2016, **469**, 830–835.
- 410 K. Akiyoshi, S. Deguchi, N. Moriguchi, S. Yamaguchi and J. Sunamoto, *Macromolecules*, 1993, **26**, 3062–3068.
- 411 T. Nishikawa, K. Akiyoshi and J. Sunamoto, *Macromolecules*, 1994, **27**, 7654–7659.
- 412 T. Nishikawa, K. Akiyoshi and J. Sunamoto, *J. Am. Chem. Soc.*, 1996, **118**, 6110–6115.
- 413 K. Akiyoshi, Y. Sasaki and J. Sunamoto, *Bioconjugate Chem.*, 1999, **10**, 321–324.
- 414 Y. Nomura, Y. Sasaki, M. Takagi, T. Narita, Y. Aoyama and K. Akiyoshi, *Biomacromolecules*, 2005, **6**, 447–452.
- 415 T. Nochi, Y. Yuki, H. Takahashi, S. Sawada, M. Mejima, T. Kohda, N. Harada, I. G. Kong, A. Sato, N. Kataoka, D. Tokuhara, S. Kurokawa, Y. Takahashi, H. Tsukada, S. Kozaki, K. Akiyoshi and H. Kiyono, *Nat. Mater.*, 2010, **9**, 572–578.
- 416 Y. Liu, S. Chakrabortee, R. Li, Y. Zheng and A. Tunnacliffe, *FEBS Lett.*, 2011, **585**, 630–634.
- 417 T. Furuki, Y. Takahashi, R. Hatanaka, T. Kikawada, T. Furuta and M. Sakurai, *J. Phys. Chem. B*, 2020, **124**, 2747–2759.
- 418 A. V. Popova, M. Hundertmark, R. Seckler and D. K. Hinch, *Biochim. Biophys. Acta, Biomembr.*, 2011, **1808**, 1879–1887.
- 419 M. A. S. Artur, J. Rienstra, T. J. Dennis, J. M. Farrant, W. Ligterink and H. Hilhorst, *Front. Plant Sci.*, 2019, **10**, 1–15.
- 420 D. Tolleter, M. Jaquinod, C. Mangavel, C. Passirani, P. Saulnier, S. Manon, E. Teyssier, N. Payet, M.-H. Avelange-Macherel and D. Macherel, *Plant Cell*, 2007, **19**, 1580–1589.
- 421 M. Hundertmark and D. K. Hinch, *BMC Genomics*, 2008, **9**, 1–22.
- 422 S. Li, N. Chakraborty, A. Borcar, M. A. Menze, M. Toner and S. C. Hand, *Proc. Natl. Acad. Sci. U. S. A.*, 2012, **109**, 20859–20864.
- 423 D. Kovacs, B. Agoston and P. Tompa, *Plant Signaling Behav.*, 2008, **3**, 710–713.
- 424 A. Banerjee and A. Roychoudhury, *Plant Growth Regul.*, 2016, **79**, 1–17.
- 425 S. E. Kudaibergenov, *Polyampholytes: synthesis, characterization and application*, Springer Science & Business Media, 2012.
- 426 K. Matsumura, R. Rajan, S. Ahmed and M. Jain, *Biopolymers for Medical Applications*, CRC Press, Boca Raton, FL, 2016, pp. 165–182.
- 427 K. M. Zurick and M. Bernards, *J. Appl. Polym. Sci.*, 2014, **131**, 40069.
- 428 H. Kitano, T. Mori, Y. Takeuchi, S. Tada, M. Gemmei-Ide, Y. Yokoyama and M. Tanaka, *Macromol. Biosci.*, 2005, **5**, 314–321.



- 429 H. Kitano, T. Kondo, T. Kamada, S. Iwanaga, M. Nakamura and K. Ohno, *Colloids Surf., B*, 2011, **88**, 455–462.
- 430 A. J. Keefe and S. Jiang, *Nat. Chem.*, 2011, **4**, 59–63.
- 431 N. Sharma, R. Rajan, S. Makhaik and K. Matsumura, *ACS Omega*, 2019, **4**, 12186–12193.
- 432 D. Zhao, R. Rajan and K. Matsumura, *ACS Appl. Mater. Interfaces*, 2019, **11**, 39459–39469.
- 433 K. Matsumura and S.-H. Hyon, *Biomaterials*, 2009, **30**, 4842–4849.
- 434 P. Zhang, F. Sun, C. Tsao, S. Liu, P. Jain, A. Sinclair, H.-C. Hung, T. Bai, K. Wu and S. Jiang, *Proc. Natl. Acad. Sci. U. S. A.*, 2015, **112**, 12046–12051.
- 435 J. H. Moon and Kenry, *Conjugated Polymers for Biological and Biomedical Applications*, John Wiley & Sons, Ltd, 2018, pp. 215–241.
- 436 T. Congdon, R. Notman and M. I. Gibson, *Biomacromolecules*, 2013, **14**, 1578–1586.
- 437 D. E. Mitchell, A. E. R. Fayter, R. C. Deller, M. Hasan, J. Gutierrez-Marcos and M. I. Gibson, *Mater. Horiz.*, 2019, **6**, 364–368.
- 438 N. K. Jain and I. Roy, *Protein Sci.*, 2009, **18**, 24–36.
- 439 A. A. Sofronova, V. A. Izumrudov, V. I. Muronetz and P. I. Semenyuk, *Polymer*, 2017, **108**, 281–287.
- 440 K. Debnath, N. Pradhan, B. K. Singh, N. R. Jana and N. R. Jana, *ACS Appl. Mater. Interfaces*, 2017, **9**, 24126–24139.
- 441 J. Madeira do O, F. Mastrotto, N. Francini, S. Allen, C. F. van der Walle, S. Stolnik and G. Mantovani, *J. Mater. Chem. B*, 2018, **6**, 1044–1054.
- 442 Y. J. Wang and G. Yu, *J. Polym. Sci., Part B: Polym. Phys.*, 2019, **57**, 1557–1558.
- 443 J. Liu and B. Liu, *Conjugated Polymers for Biological and Biomedical Applications*, John Wiley & Sons, Ltd, 2018, pp. 1–33.
- 444 C. Xie and K. Pu, *Conjugated Polymers for Biological and Biomedical Applications*, John Wiley & Sons, Ltd, 2018, pp. 111–133.
- 445 X. Liu, W. Huang and Q. Fan, *Conjugated Polymers for Biological and Biomedical Applications*, John Wiley & Sons, Ltd, 2018, pp. 171–213.
- 446 H. Sun, F. Lv, L. Liu and S. Wang, *ACS Appl. Mater. Interfaces*, 2019, **11**, 22973–22978.
- 447 J. Honda, H. Andou, T. Mannen and S. Sugimoto, in *Bioseparation Engineering*, ed. I. Endo, T. Nagamune, S. Katoh and T. Yonemoto, Elsevier, 2000, vol. 16, pp. 101–105.
- 448 M. P. Murphy and H. LeVine 3rd, *J. Alzheimer's Dis.*, 2010, **19**, 311–323.
- 449 R. W. Carrell and B. Gooptu, *Curr. Opin. Struct. Biol.*, 1998, **8**, 799–809.
- 450 P. J. Thomas, B. H. Qu and P. L. Pedersen, *Trends Biochem. Sci.*, 1995, **20**, 456–459.
- 451 C. Soto, *J. Mol. Med.*, 1999, **77**, 412–418.
- 452 J. W. Kelly, *Curr. Opin. Struct. Biol.*, 1998, **8**, 101–106.
- 453 G. Zettlmeissl, R. Rudolph and R. Jaenicke, *Biochemistry*, 1979, **18**, 5567–5571.
- 454 T. Kiefhaber, R. Rudolph, H.-H. Kohler and J. Buchner, *Bio/Technology*, 1991, **9**, 825–829.
- 455 D. L. Hevehan and E. De Bernardez Clark, *Biotechnol. Bioeng.*, 1997, **54**, 221–230.
- 456 G. Taylor, M. Hoare, D. R. Gray and F. A. O. Marston, *Bio/Technology*, 1986, **4**, 553–557.
- 457 H. H. Wong, B. K. O'Neill and A. P. Middelberg, *Bioseparation*, 1996, **6**, 361–372.
- 458 C. Tin Lee, G. Morreale and A. P. J. Middelberg, *Biotechnol. Bioeng.*, 2004, **85**, 103–113.
- 459 N. K. Puri, E. Crivelli, M. Cardamone, R. Fiddes, J. Bertolini, B. Ninham and M. R. Brandon, *Biochem. J.*, 1992, **285**(Pt 3), 871–879.
- 460 R. H. Khan, K. B. Rao, A. N. Eshwari, S. M. Totey and A. K. Panda, *Biotechnol. Prog.*, 1998, **14**, 722–728.
- 461 K. Tsumoto, M. Umetsu, I. Kumagai, D. Ejima and T. Arakawa, *Biochem. Biophys. Res. Commun.*, 2003, **312**, 1383–1386.
- 462 S. S. Mahmoud, S. Wang, M. M. Moloney and H. R. Habibi, *Comp. Biochem. Physiol., Part B: Biochem. Mol. Biol.*, 1998, **120**, 657–663.
- 463 E. D. B. Clark, *Curr. Opin. Biotechnol.*, 1998, **9**, 157–163.
- 464 M. Yasuda, Y. Murakami, A. Sowa, H. Ogino and H. Ishikawa, *Biotechnol. Prog.*, 1998, **14**, 601–606.
- 465 M. Umetsu, K. Tsumoto, M. Hara, K. Ashish, S. Goda, T. Adschiri and I. Kumagai, *J. Biol. Chem.*, 2003, **278**, 8979–8987.
- 466 S. Machida, S. Ogawa, S. Xiaohua, T. Takaha, K. Fujii and K. Hayashi, *FEBS Lett.*, 2000, **486**, 131–135.
- 467 M. M. Altamirano, R. Golbik, R. Zahn, A. M. Buckle and A. R. Fersht, *Proc. Natl. Acad. Sci. U. S. A.*, 1997, **94**, 3576–3578.
- 468 N. S. Preston, D. J. Baker, S. P. Bottomley and M. G. Gore, *Biochim. Biophys. Acta*, 1999, **1426**, 99–109.
- 469 K. Tsumoto, M. Umetsu, H. Yamada, T. Ito, S. Misawa and I. Kumagai, *Protein Eng.*, 2003, **16**, 535–541.
- 470 T. Mannen, S. Yamaguchi, J. Honda, S. Sugimoto and T. Nagamune, *J. Biosci. Bioeng.*, 2001, **91**, 403–408.
- 471 N. Karupiah and A. Sharma, *Biochem. Biophys. Res. Commun.*, 1995, **211**, 60–66.
- 472 A. Cooper, *J. Am. Chem. Soc.*, 1992, **114**, 9208–9209.
- 473 S.-C. Lin, K.-L. Lin, H.-C. Chiu and S. Lin, *Biotechnol. Bioeng.*, 2000, **67**, 505–512.
- 474 Y.-J. Chen, L.-W. Huang, H.-C. Chiu and S.-C. Lin, *Enzyme Microb. Technol.*, 2003, **32**, 120–130.
- 475 I. Roy and M. N. Gupta, *Protein Eng.*, 2003, **16**, 1153–1157.
- 476 Z. Huang, C. Ni, X. Zhou, Y. Liu, Y. Tan, J. Xiao, W. Feng, X. Li and S. Yang, *Biotechnol. Prog.*, 2009, **25**, 1387–1395.
- 477 K. Mondal, S. Raghava, B. Barua, R. Varadarajan and M. N. Gupta, *Langmuir*, 2007, **23**, 70–75.
- 478 S. M. Doyle and S. Wickner, *Trends Biochem. Sci.*, 2009, **34**, 40–48.
- 479 M. Nakamoto, T. Nonaka, K. J. Shea, Y. Miura and Y. Hoshino, *J. Am. Chem. Soc.*, 2016, **138**, 4282–4285.
- 480 C. T. Lee, A. M. Buswell and A. P. J. Middelberg, *Chem. Eng. Sci.*, 2002, **57**, 1679–1684.
- 481 H. Hohenblum, K. Vorauer-Uhl, H. Katinger and D. Mattanovich, *J. Biotechnol.*, 2004, **109**, 3–11.



- 482 S. Katoh, Y. Sezai, T. Yamaguchi, Y. Katoh, H. Yagi and D. Nohara, *Process Biochem.*, 1999, **35**, 297–300.
- 483 D. B. Wetlaufer and Y. Xie, *Protein Sci.*, 1995, **4**, 1535–1543.
- 484 M. Cardamone, N. K. Puri and M. R. Brandon, *Biochemistry*, 1995, **34**, 5773–5794.
- 485 Y. Maeda, H. Yamada, T. Ueda and T. Imoto, *Protein Eng., Des. Sel.*, 1996, **9**, 461–465.
- 486 I. Kurucz, J. A. Titus, C. R. Jost and D. M. Segal, *Mol. Immunol.*, 1995, **32**, 1443–1452.
- 487 J. Maachupalli-Reddy, B. D. Kelley and E. De Bernardez Clark, *Biotechnol. Prog.*, 1997, **13**, 144–150.
- 488 F.-H. Ma, Y. An, J. Wang, Y. Song, Y. Liu and L. Shi, *ACS Nano*, 2017, **11**, 10549–10557.
- 489 B. M. Gorovits and P. M. Horowitz, *Biochemistry*, 1998, **37**, 6132–6135.
- 490 R. J. St John, J. F. Carpenter and T. W. Randolph, *Proc. Natl. Acad. Sci. U. S. A.*, 1999, **96**, 13029–13033.
- 491 D. Foguel, C. R. Robinson, P. C. de Sousa Jr, J. L. Silva and A. S. Robinson, *Biotechnol. Bioeng.*, 1999, **63**, 552–558.
- 492 B. G. Lefebvre, M. J. Gage and A. S. Robinson, *Biotechnol. Prog.*, 2004, **20**, 623–629.
- 493 B. E. Schoner, K. S. Bramlett, H. Guo and T. P. Burris, *Mol. Genet. Metab.*, 2005, **85**, 318–322.
- 494 R. Schlegl, G. Iberer, C. Machold, R. Necina and A. Jungbauer, *J. Chromatogr. A*, 2003, **1009**, 119–132.
- 495 R. Schlegl, R. Necina and A. Jungbauer, *Chem. Eng. Technol.*, 2005, **28**, 1375–1386.
- 496 B.-J. Park, C.-H. Lee and Y.-M. Koo, *Korean J. Chem. Eng.*, 2005, **22**, 425–432.
- 497 T. H. Cho, S. J. Ahn and E. K. Lee, *Bioseparation*, 2001, **10**, 189–196.

